

Recycled Content

Panel | Acoustic

Tempest 2120


Panel | Acoustic


Tempest 2120


Specifications


Content	100% pre-consumer recycled polyester
Weight	11.3 ± 1.0 oz./lin. yd
Width	66" min. useable
Repeat	none
Tackable	yes

Performance

-  **Colorfastness to light (AATCC 16.3 Option 3)**
Grade 4 min. at 40 hours

-  **Colorfastness to crocking (AATCC 8)**
Grade 4 min. dry & Grade 3 min. wet

-  **Breaking Strength (ASTM D5034)**
180 lbf min. warp and 160 lbf fill

-  **Flammability**
ASTM E84 Class I or A

Cleaning Code

Standard Care Label W-S. Clean with water based cleaning agents, foam or pure, water free solvents. Vacuuming or light brushing is recommended to prevent dust and soil buildup. May also be disinfected with hydrogen peroxide, alcohol, and quaternary ammonium (quat) based cleaners.

Acoustical Performance

Our acoustic fabrics are all acoustically transparent. This represents the amount of sound that passes through the fabric.

Acoustic Transparency: 95%

For more detailed results, please consult our website.

Miscellaneous


- Application testing of this product is recommended.
- Colors may vary between dye lots.
- This is a directional fabric.
- Tackable properties may vary depending on fabric structure and recovery characteristics.

Proudly woven in North America supporting our local communities.

Sustainability

100% recycled and recyclable

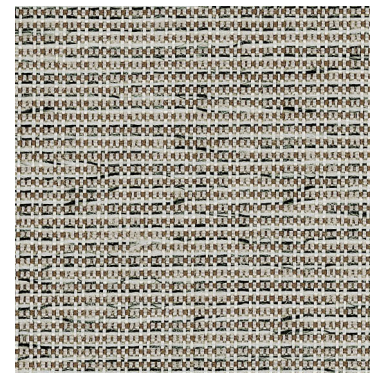


 This pattern is included in the underwriters laboratory panel fabric recognition program. Additional testing of this U.L. recognized fabric is not required on approved panels from participating manufacturers.

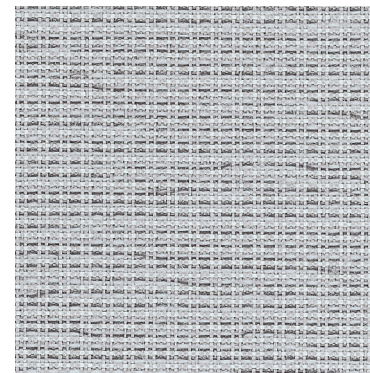
*Certification Marks owned by the Association for Contract Textiles, Inc.



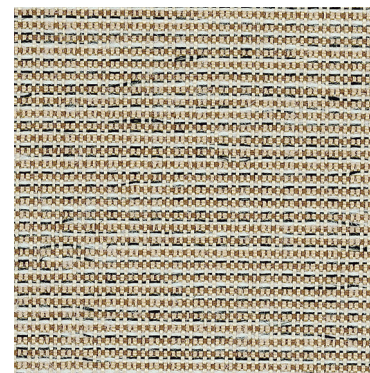
Zebra
015



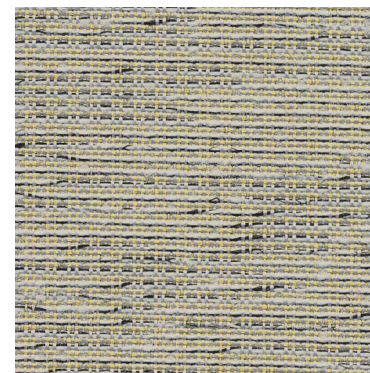
Full Stream
012



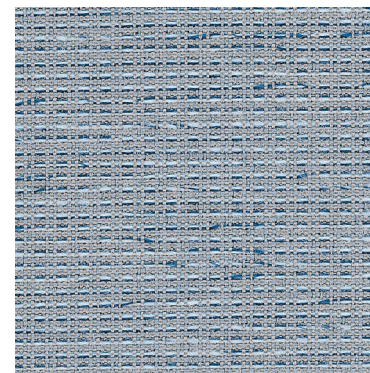
Frost
031



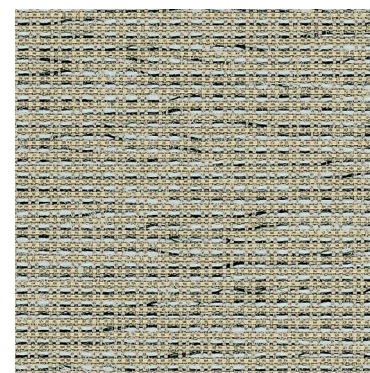
Gold Rush
041



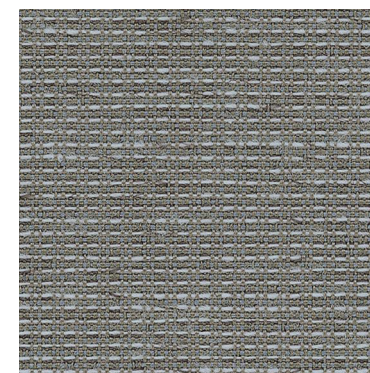
Tumbleweed
030



Starlight
023



Dragonfly
020



Slate
025

duvaltex

duvaltex

USA & INTERNATIONAL | T 800-544-0200
CANADA | T 418 227-9897
For samples, visit [ex.com">duvaltex.com](https://www.duvalt<span style=)



FC-2120 25/12