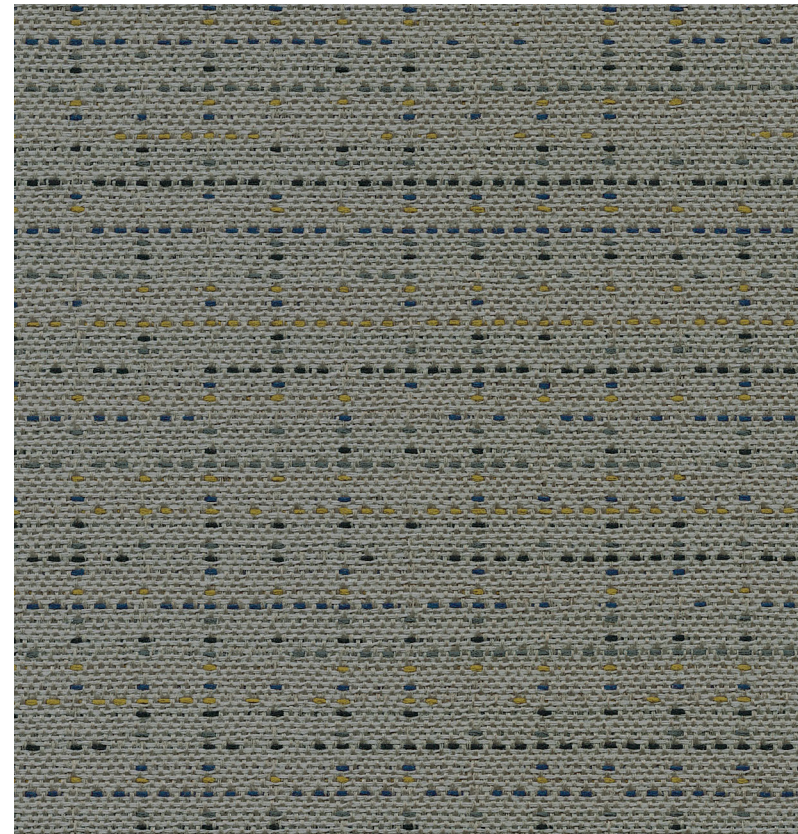


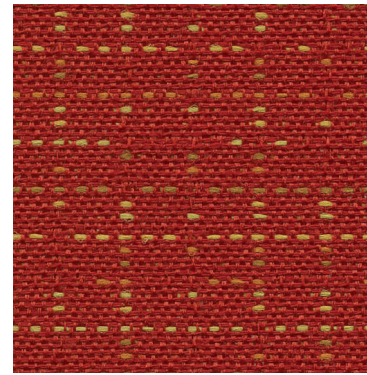
C0 Stain Repellent

Seating | Panel

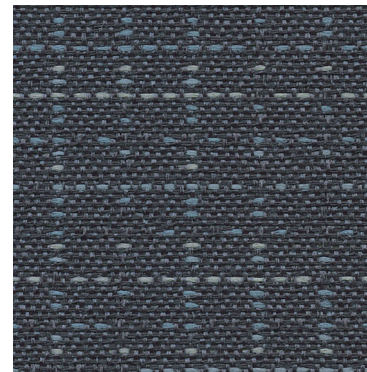
Couture 4858



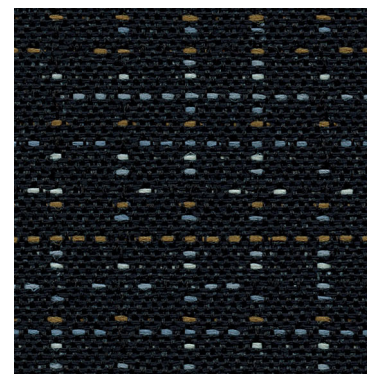
Thimble
1756



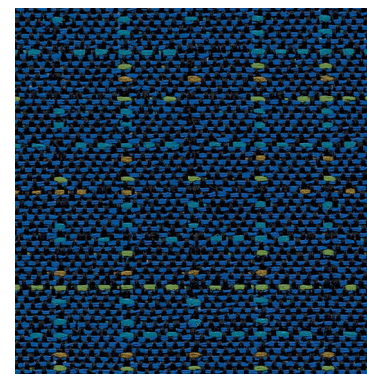
Basting
1751



Shears
1750



Seam
1752



Tailor
1757

Couture 4858

Seating | Panel

Specifications

Content	57% post-consumer recycled polyester 25% pre-consumer recycled polyester 18% polyester
Weight	9.2 ± 1.0 oz./lin. yd
Width	54" min. useable
Repeat	14.5" vertical 14" horizontal
Backing	acrylic backcoating
Treatment	C0 stain repellent
Tackable	yes

Cleaning Code

Standard Care Label W-S. Clean with water based cleaning agents, foam or pure, water free solvents. Vacuuming or light brushing is recommended to prevent dust and soil buildup. May also be disinfected with hydrogen peroxide, alcohol, and quaternary ammonium (quat) based cleaners.

Miscellaneous

- Application testing of this product is recommended.
- Colors may vary between dye lots.
- This is a directional fabric.
- Tackable properties may vary depending on fabric structure and recovery characteristics.

Proudly woven in North America supporting our local communities.

Sustainability



Performance

- Colorfastness to light (AATCC 16.3 Option 3)**
Grade 4 min. at 40 hours
- Colorfastness to crocking (AATCC 8)**
Grade 4 min. dry & Grade 3 min. wet
- Breaking Strength (ASTM D5034)**
115 lbf warp and 85 lbf fill
- Seam Slippage (ASTM D4034)**
55 lbf warp and 60 lbf fill
- Pilling Resistance (ASTM D3511)**
Class 5
- Flammability**
CA Technical Bulletin 117-2013 Section 1
ASTM E84 Class I or A
- Abrasion (ASTM D4157)**
100,000 double rubs cotton duck

This pattern is included in the underwriters laboratory panel fabric recognition program. Additional testing of this U.L. recognized fabric is not required on approved panels from participating manufacturers.

*Certification Marks owned by the Association for Contract Textiles, Inc.

duvalttex

duvalttex

USA & INTERNATIONAL | T 800-544-0200
CANADA | T 418 227-9897
For samples, visit [t.com">duvaltt.com](https://www.duvalt<span style=)



FC-4858 25/12