

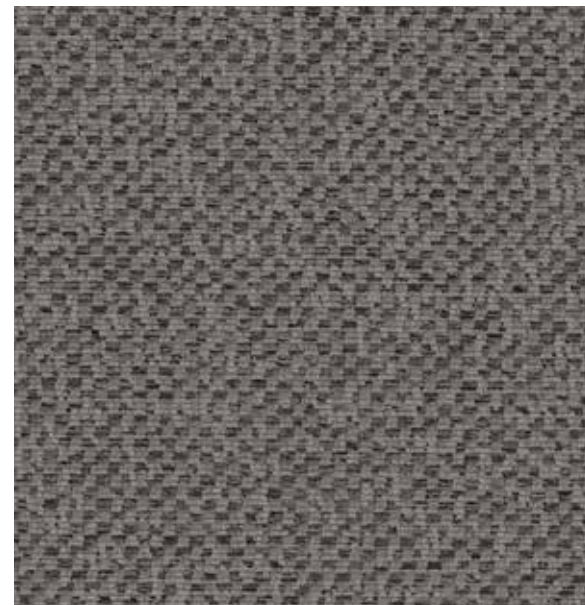
Biodegradable\*

Seating

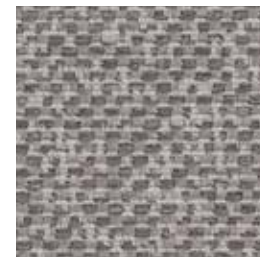
# Tweedscape 2193

CLEAN IMPACT **TEXTILES**

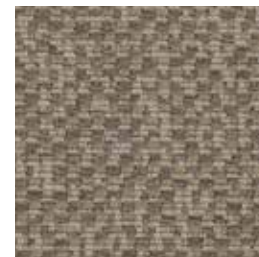
## Tweedscape 2193



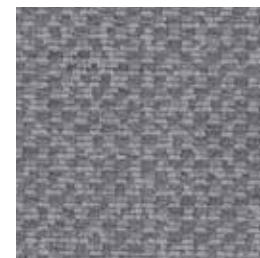
Sparrow  
201



Birch  
101



Bluff  
102



Moonlight  
105



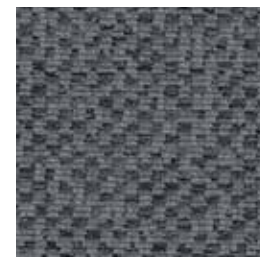
Rose Beige  
103



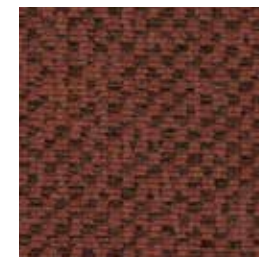
North Shore  
301



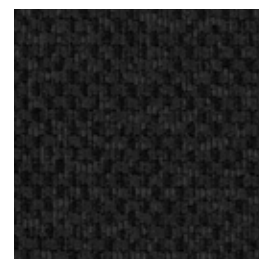
Aqua Mist  
104



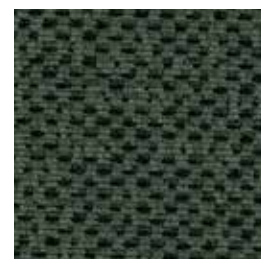
Ash  
202



Mesa  
203



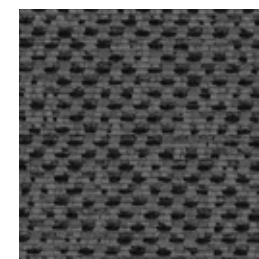
Black Feather  
305



Eucalyptus  
302



Steel  
304



Twig  
303

### Specifications

<b>Content</b>	100% recycled biodegradable* polyester
<b>Weight</b>	12.4 ± 0.5 oz./lin. yd 280 g/m <sup>2</sup> (± 5%)
<b>Width</b>	54" min. useable 137 cm min. useable
<b>Repeat</b>	11" vertical   12.25" horizontal
<b>Backing</b>	biodegradable* acrylic backcoating
<b>Treatment</b>	none

### Cleaning Code

Standard Care Label W-S. Clean with water based cleaning agents, foam or pure, water free solvents. Vacuuming or light brushing is recommended to prevent dust and soil buildup.

### Miscellaneous

- Application testing of this product is recommended.
- Colors may vary between dye lots.
- This is a directional fabric.

### Sustainability

**BIODEGRADABLE\* CLEAN IMPACT TEXTILES®** address the daunting problem of how to deal with polyester fabric at the end of its useful life.

Biodegradable\* in landfill after 1,278 days (tested under ASTM D5511)

\* Rate and extent of biodegradation into elements found in nature is 91% after 1,278 days under ASTM D5511 (Anaerobic Biodegradation of Plastic Materials Under High Solids Anaerobic Digestion Conditions). The test was done with the same component (PET) polyester and biocatalyst additive. No evidence of further degradation.

### Performance

- Colorfastness to light (AATCC 16.3 Option 3)**  
Grade 4.5 min. at 40 hours
- Colorfastness to crocking (AATCC 8)**  
Grade 4 min. dry & Grade 4 min. wet
- Breaking Strength (ASTM D5034)**  
208 lbf min. warp and 226 lbf min. fill
- Seam Slippage (ASTM D4034)**  
98 lbf min. warp and 97 lbf min. fill
- Pilling Resistance (ASTM D3511)**  
Class 4 min.
- Flammability**  
CA Technical Bulletin 117-2013 Section 1  
NFPA 260-2013 Class I  
EN 1021-1 Cigarette  
EN 1021-2 Match  
Flammability performance may vary depending on the substrate used.
- Abrasion (ASTM D4157)**  
 Wyzenbeek Abrasion Resistance (ASTM D4157)  
100,000 double rubs min. cotton duck  
Martindale Abrasion Resistance (ISO 12947-2)  
45,000 cycles

Certification Marks owned by the Association for Contract Textiles, Inc.

