

Available with
and without Crypton*

Seating | Panel | Acoustic

Palette 2155



Acorn
1137



Cutch
1135



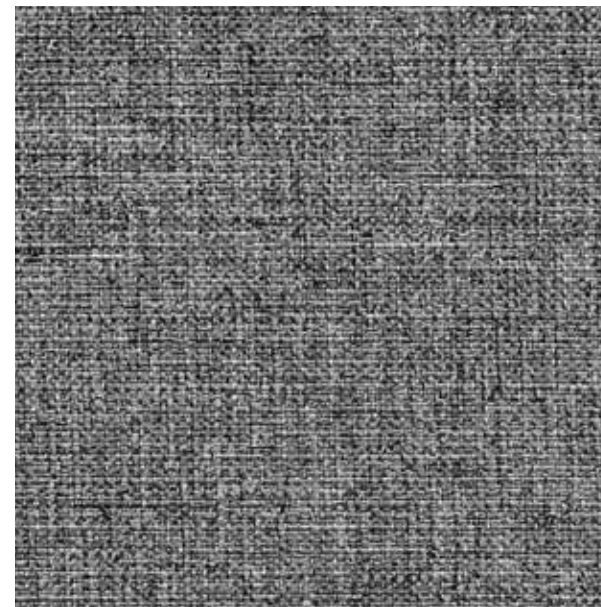
Chamomile
1131



Alder
1136



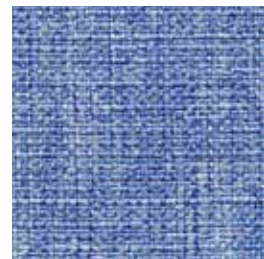
Artichoke
1145



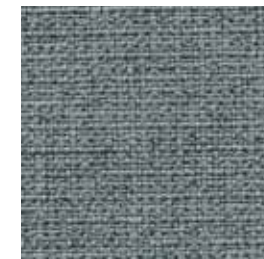
Birch Bark
1133



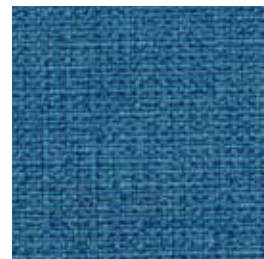
Alkanet
1132



Cornflower
1151



Lichen
1149



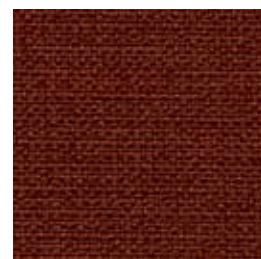
Saxon Blue
1150



Sunflower
1144



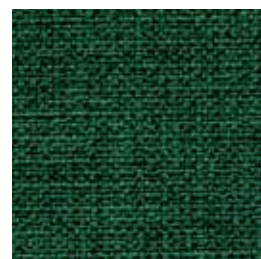
Sandalwood
1143



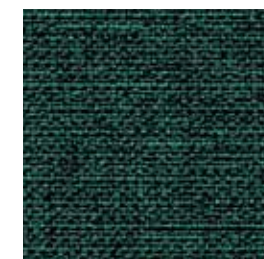
Annatto
1142



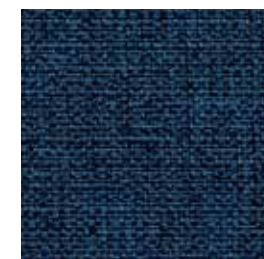
Sorrel
1146



Spinach
1147



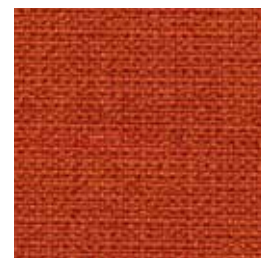
Nettle
1148



Indigo
1152



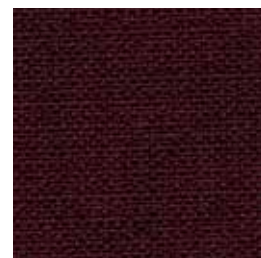
Knotweed
1153



Paprika
1141



Sumac
1140



Murex
1139



Walnut
1138



Iron
1134



Logwood
1154

Palette 2155

Seating | Panel | Acoustic

Available with and without Crypton*

*to order with Crypton add a "C" to the color number

Specifications

Content	100% polyester
Weight	12 ± 1.0 oz./lin. yd 271 g/m ² (± 5%)
Width	54" min. useable 137 cm min. 137 cm useable
Repeat	none
Backing	Crypton moisture barrier
Treatment	Crypton odor resistance
Tackable	yes

How to order Palette with Crypton

When ordering with Crypton add a "C" to the color number. ex.: 2155-1137C Acorn = with Crypton

Specifications and performance available on request.






Cleaning Code

Standard Care Label W-S. Clean with water based cleaning agents, foam or pure, water free solvents. Vacuuming or light brushing is recommended to prevent dust and soil buildup. May also be disinfected with hydrogen peroxide, alcohol, and quaternary ammonium (quat) based cleaners.

Miscellaneous

- Application testing of this product is recommended.
- Colors may vary between dye lots.
- This is a directional fabric.
- Tackable properties may vary depending on fabric structure and recovery characteristics.

Performance


	Colorfastness to light (AATCC 16.3 Option 3) Grade 4 min. at 40 hours
	Colorfastness to crocking (AATCC 8) Grade 4 min. dry & Grade 3 min. wet
	Breaking Strength (ASTM D5034) 295 lbf min. warp and 280 lbf fill
	Seam Slippage (ASTM D4034) 85 lbf min. warp and 75 lbf fill
	Pilling Resistance (ASTM D3511) Class 4 min.
	Flammability CA Technical Bulletin 117-2013 Section 1 ASTM E84 Class I or A EN 1021-1 Cigarette EN 1021-2 Match EN 13501-1 Adhered Class B, s1, d0 Flammability performance may vary depending on the substrate used.
	Abrasion (ASTM D4157) * Wyzenbeek Abrasion Resistance (ASTM D4157) 100,000 double rubs min. cotton duck Martindale Abrasion Resistance (ISO 12947-2) 70,000 cycles

Acoustical Performance

Our acoustic fabrics are all acoustically transparent. This represents the amount of sound that passes through the fabric.

Acoustic Transparency: 90%

For more detailed results, please consult our website.

 This pattern is included in the underwriters laboratory panel fabric recognition program. Additional testing of this U.L. recognized fabric is not required on approved panels from participating manufacturers.

*Certification Marks owned by the Association for Contract Textiles, Inc.

duvaltex

USA & INTERNATIONAL | T 800-544-0200
CANADA | T 418 227-9897
For samples, visit [duvaltex.com](https://www.duvaltex.com)



FC-2155 26/02