

Biodegradable*

Seating

Nest 2199

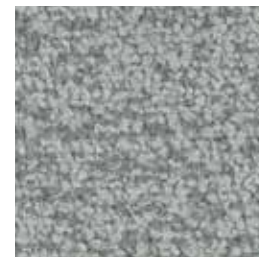
CLEAN IMPACT **TEXTILES**[®]



Truffle
243



Morningtide
249



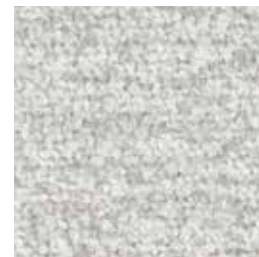
Mineral
242



Lakeview
250



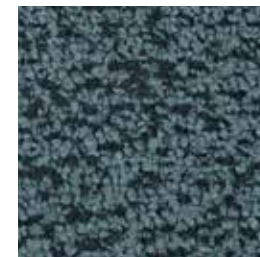
Truffle
243



Luna
241



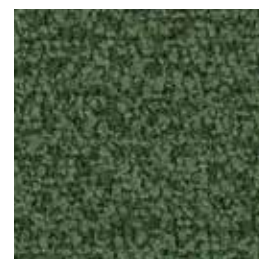
Fawn
245



Twilight
248



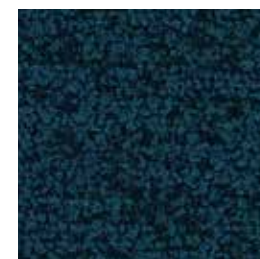
Umbra
247



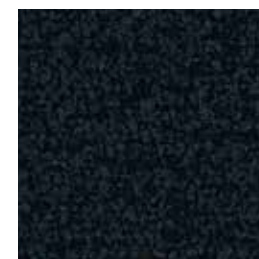
Laurel
252



Woodland
246



Stargazer
251



Volcanic
244

Nest 2199

Specifications

Content	100% post-consumer recycled biodegradable* polyester
Weight	20.3 ± 1.0 oz./lin. yd 459 g/m ² (± 5%)
Width	54" min. useable 137 cm min. useable
Repeat	none

Cleaning Code

Standard Care Label W-S. Clean with water based cleaning agents, foam or pure, water free solvents. Vacuuming or light brushing is recommended to prevent dust and soil buildup. May also be disinfected with hydrogen peroxide, alcohol, and quaternary ammonium (quat) based cleaners.

Miscellaneous

- Application testing of this product is recommended.
- Colors may vary between dye lots.
- This is a directional fabric.

Sustainability

BIODEGRADABLE* CLEAN IMPACT TEXTILES[®] address the daunting problem of how to deal with polyester fabric at the end of its useful life.

Biodegradable* in landfill after 1,278 days (tested under ASTM D5511)

*Rate and extent of biodegradation into elements found in nature is 91% after 1,278 days under ASTM D5511 (Anaerobic Biodegradation of Plastic Materials Under High Solids Anaerobic Digestion Conditions). The test was done with the same component (PET) polyester and biocatalyst additive. No evidence of further degradation.

Performance

- Colorfastness to light (AATCC 16.3 Option 3)**
Grade 4 min. at 40 hours
- Colorfastness to crocking (AATCC 8)**
Grade 4 min. dry & Grade 4 min. wet
- Breaking Strength (ASTM D5034)**
250 lbf min. warp and 202 lbf fill
- Seam Slippage (ASTM D4034)**
130 lbf min. warp and 130 lbf min. fill
- Pilling Resistance (ASTM D3511)**
Class 4 min.
- Flammability**
CA Technical Bulletin 117-2013 Section 1
NFPA 260-2013 Class I
EN 1021-1 Cigarette
EN 1021-2 Match
Flammability performance may vary depending on the substrate used.
- Abrasion (ASTM D4157)**
 Wyzenbeek Abrasion Resistance (ASTM D4157)
100,000 double rubs min. cotton duck
Martindale Abrasion Resistance (ISO 12947-2)
70,000 cycles

Certification Marks owned by the Association for Contract Textiles, Inc.

