

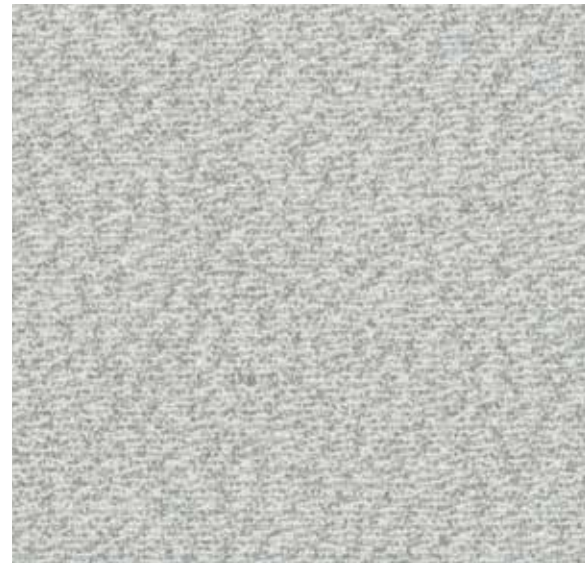
Biodegradable\*  
Bleach Cleanable

Seating | Panel | Acoustic

# Marlstone 2194

# Marlstone 2194

CLEAN IMPACT **TEXTILES**



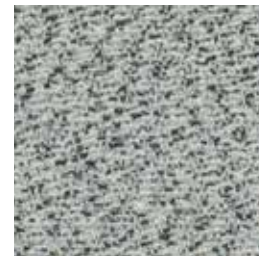
Silica  
902



Calcite  
901



Glow  
903



Seasalt  
921



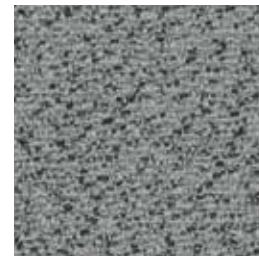
Reed Flower  
904



Mineral Blue  
907



Cinder  
923



Flint  
922



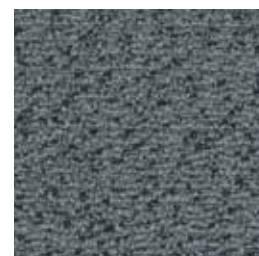
Nut  
905



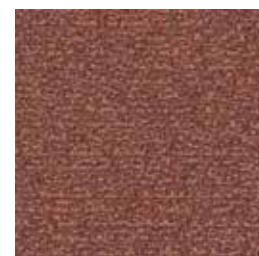
Arboreal  
930



Slate Blue  
927



Granite  
924



Rose Stone  
906



Lava Rock  
925



Fjord  
928



Peat  
926



Amethyst  
929

## Specifications

<b>Content</b>	100% post-consumer recycled biodegradable* polyester
<b>Weight</b>	13.4 ± 1.0 oz./lin. yd 303 g/m <sup>2</sup> (± 5%)
<b>Width</b>	54" min. useable 137 cm min. useable
<b>Repeat</b>	none
<b>Tackable</b>	yes

## Cleaning Code

Standard Care Label W-S. Clean with water based cleaning agents, foam or pure, water free solvents. Vacuuming or light brushing is recommended to prevent dust and soil buildup.

**Bleach Cleanable** - May be cleaned with a 10% bleach-to-water solution. Rinse well after cleaning. May also be disinfected with hydrogen peroxide, alcohol, and quaternary ammonium (quat) based cleaners.

## Miscellaneous

- Application testing of this product is recommended.
- Colors may vary between dye lots.
- This is a directional fabric.
- Tackable properties may vary depending on fabric structure and recovery characteristics.

## Sustainability

**BIODEGRADABLE\* CLEAN IMPACT TEXTILES®** address the daunting problem of how to deal with polyester fabric at the end of its useful life.

Biodegradable\* in landfill after 1,278 days (tested under ASTM D5511)

\*Rate and extent of biodegradation into elements found in nature is 91% after 1,278 days under ASTM D5511 (Anaerobic Biodegradation of Plastic Materials Under High Solids Anaerobic Digestion Conditions). The test was done with the same component (PET) polyester and biocatalyst additive. No evidence of further degradation.

## Performance

**Colorfastness to light (AATCC 16.3 Option 3)**  
Grade 4 min. at 40 hours

**Colorfastness to crocking (AATCC 8)**  
Grade 4 min. dry & Grade 4 min. wet

**Breaking Strength (ASTM D5034)**  
319 lbf min. warp and 363 lbf min. fill

**Seam Slippage (ASTM D4034)**  
121 lbf min. warp and 102 lbf min. fill

**Pilling Resistance (ASTM D3511)**  
Class 4 min.

**Flammability**  
CA Technical Bulletin 117-2013 Section 1  
NFPA 260-2013 Class I  
ASTM E84 Class I or A  
EN 1021-1 Cigarette  
EN 1021-2 Match  
EN 13501-1 Adhered Class B, s1, d0  
Flammability performance may vary depending on the substrate used.

**Abrasion (ASTM D4157)**  
**A**\* Wyzenbeek Abrasion Resistance (ASTM D4157)  
100,000 double rubs min. cotton duck  
Martindale Abrasion Resistance (ISO 12947-2)  
65,000 cycles

## Acoustical Performance

Our acoustic fabrics are all acoustically transparent. This represents the amount of sound that passes through the fabric.

**Acoustic Transparency:** 90%

For more detailed results, please consult our website.

**This pattern is included in the underwriters laboratory panel fabric recognition program. Additional testing of this U.L. recognized fabric is not required on approved panels from participating manufacturers.**

\*Certification Marks owned by the Association for Contract Textiles, Inc.

CLEAN IMPACT **TEXTILES**

duvalttex

duvalttex

USA & INTERNATIONAL | T 800-544-0200  
CANADA | T 418 227-9897  
For samples, visit [t.com">duvaltt.com](http://duvalt<span style=)



FC-2194 26/02