

## Marin 1300



Dolphin  
1147



Sunfish  
1153



Mangrove  
1154



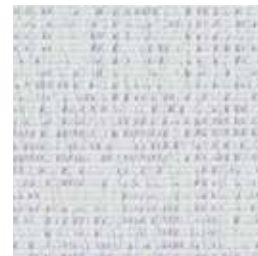
Swell  
1155



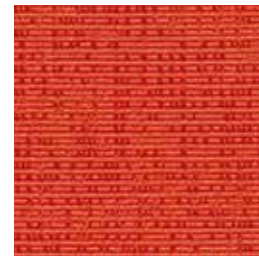
Benthic  
1157



Great White  
1143



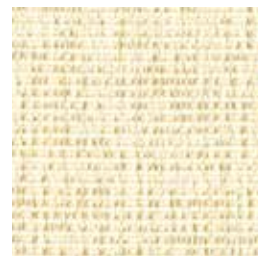
Ice Edge  
1145



Clownfish  
1152



Intertidal  
1156



Tusk  
1144



Sea Glass  
1146



Red Snapper  
1151



Carrageen  
1150



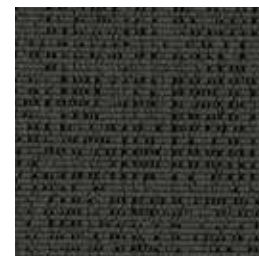
Sand  
1142



Pelican  
1141



Grey Whale  
1148



Blacktip  
1149

### Specifications

<b>Content</b>	90% post-consumer recycled polyester including ocean waste 10% polyester
<b>Weight</b>	12.5 ± 1.0 oz./lin. yd 228 g/m <sup>2</sup> (± 5%)
<b>Width</b>	67" min. useable 170 cm min. useable
<b>Repeat</b>	19.1" vertical   12.76" horizontal
<b>Tackable</b>	yes

### Cleaning Code

Standard Care Label W-S. Clean with water based cleaning agents, foam or pure, water free solvents. Vacuuming or light brushing is recommended to prevent dust and soil buildup. May also be disinfected with hydrogen peroxide, alcohol, and quaternary ammonium (quat) based cleaners.

### Miscellaneous

- Application testing of this product is recommended.
- Colors may vary between dye lots.
- This is a directional fabric.
- Tackable properties may vary depending on fabric structure and recovery characteristics.

### Sustainability

**OCEAN WASTE CLEAN IMPACT TEXTILES®**  
For every pound of fabric produced, up to half a pound of marine waste is removed from the ocean.

### SEAQUAL INITIATIVE

By partnering with the SEAQUAL INITIATIVE, we transform ocean waste into amazing textiles.

Duvaltex is an official and authorized advertiser of SEAQUAL® YARN, the SEAQUAL INITIATIVE and their related trademarks, under licence agreement. Only SEAQUAL licensees are permitted to publicly advertise details about SEAQUAL trademarks.

### Performance

- Colorfastness to light (AATCC 16.3 Option 3)**  
Grade 4 min. at 40 hours
- Colorfastness to crocking (AATCC 8)**  
Grade 4 min. dry & Grade 3 min. wet
- Breaking Strength (ASTM D5034)**  
245 lbf min. warp and 170 lbf min. fill
- Flammability**  
ASTM E84 Class I or A  
EN 1021-1 Cigarette  
EN 1021-2 Match  
EN 13501-1 Adhered Class B, s1, d0  
Flammability performance may vary depending on the substrate used.
- Abrasion (ASTM D4157)**  
\* Wyzenbeek Abrasion Resistance (ASTM D4157)  
100,000 double rubs min. cotton duck

### Acoustical Performance

Our acoustic fabrics are all acoustically transparent. This represents the amount of sound that passes through the fabric.

**Acoustic Transparency:** 90%

For more detailed results, please consult our website.

This pattern is included in the underwriters laboratory panel fabric recognition program. Additional testing of this U.L. recognized fabric is not required on approved panels from participating manufacturers.

\*Certification Marks owned by the Association for Contract Textiles, Inc.

