

Ocean Waste
Biodegradable*

Seating | Panel | Acoustic

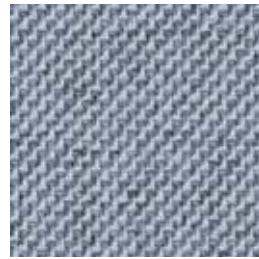
Gather 2195

CLEAN IMPACT **TEXTILES**

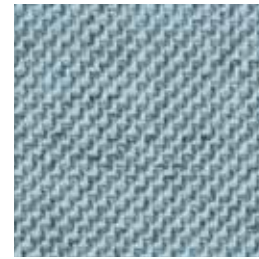
Gather 2195



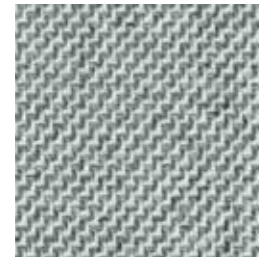
Halo
422



Haze
430



Breeze
426



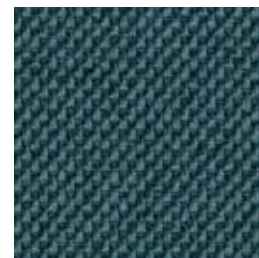
Pearl
411



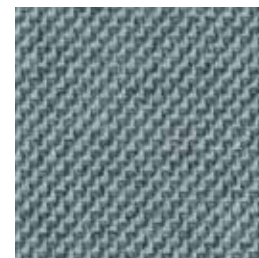
Pecan
412



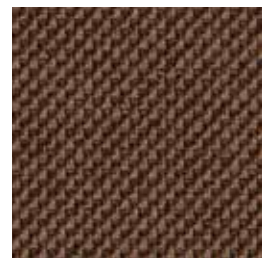
Cornflower
429



Storm
425



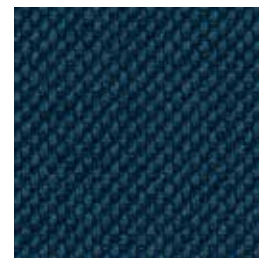
Mineral Rock
415



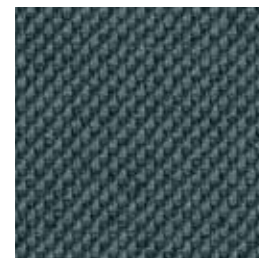
Rustic
420



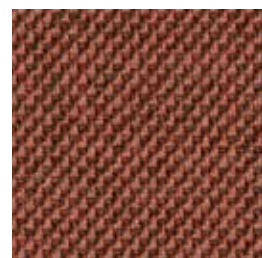
Dusk
428



Twilight
427



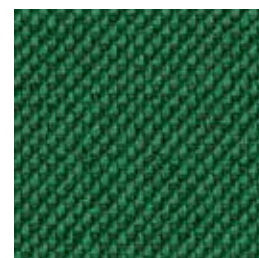
Anchor
416



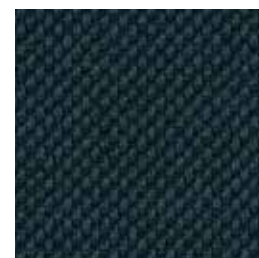
Sedona
421



Plum Grey
413



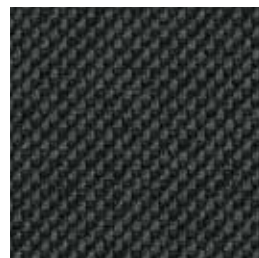
Bottle Green
424



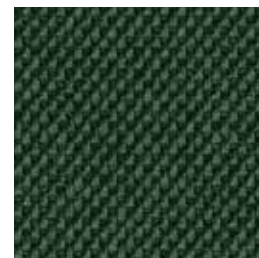
Anthracite
417



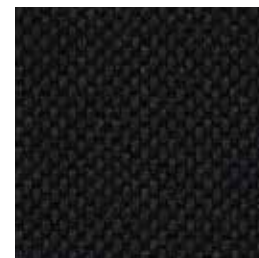
Cherry Lacquer
419



Truffle
414



Laurel
423



Onyx
418

Specifications

Content	82% post-consumer recycled biodegradable* polyester including ocean waste 18% biodegradable* polyester
Weight	16.4 ± 1.0 oz./lin. yd 371 g/m ² (± 5%)
Width	54" min. useable 137 cm min. useable
Repeat	none

Cleaning Code

Standard Care Label W-S. Clean with water based cleaning agents, foam or pure, water free solvents. Vacuuming or light brushing is recommended to prevent dust and soil buildup. May also be disinfected with hydrogen peroxide, alcohol, and quaternary ammonium (quat) based cleaners.

Miscellaneous

- Application testing of this product is recommended.
- Colors may vary between dye lots.
- This is a directional fabric.

Sustainability

OCEAN WASTE CLEAN IMPACT TEXTILES®

For every pound of fabric produced, up to half a pound of marine waste is removed from the ocean.

SEAQUAL INITIATIVE

By partnering with the SEAQUAL INITIATIVE, we transform ocean waste into amazing textiles.

BIODEGRADABLE* CLEAN IMPACT TEXTILES®

address the daunting problem of how to deal with polyester fabric at the end of its useful life.

Biodegradable* in landfill after 1,278 days (tested under ASTM D5511)

*Rate and extent of biodegradation into elements found in nature is 91% after 1,278 days under ASTM D5511 (Anaerobic Biodegradation of Plastic Materials Under High Solids Anaerobic Digestion Conditions). The test was done with the same component (PET) polyester and biocatalyst additive. No evidence of further degradation.

Duvaltex is an official and authorized advertiser of SEAQUAL® YARN, the SEAQUAL INITIATIVE and their related trademarks, under licence agreement. Only SEAQUAL licensees are permitted to publicly advertise details about SEAQUAL trademarks.

Performance

Colorfastness to light (AATCC 16.3 Option 3)
Grade 4 min. at 40 hours

Colorfastness to crocking (AATCC 8)
Grade 4 min. dry & Grade 4 min. wet

Breaking Strength (ASTM D5034)
373 lbf min. warp and 328 lbf min. fill

Seam Slippage (ASTM D4034)
115 lbf min. warp and 103 lbf min. fill

Pilling Resistance (ASTM D3511)
Class 4 min.

Flammability
 CA Technical Bulletin 117-2013 Section 1
NFPA 260-2013 Class I
ASTM E84 Class I or A
EN 1021-1 Cigarette
EN 1021-2 Match
EN 13501-1 Adhered Class B, s1, d0
Flammability performance may vary depending on the substrate used.

Abrasion (ASTM D4157)
 Wyzenbeek Abrasion Resistance (ASTM D4157)
100,000 double rubs min. cotton duck
Martindale Abrasion Resistance (ISO 12947-2)
65,000 cycles

Acoustical Performance

Our acoustic fabrics are all acoustically transparent. This represents the amount of sound that passes through the fabric.

Acoustic Transparency: 90%

For more detailed results, please consult our website.

This pattern is included in the underwriters laboratory panel fabric recognition program. Additional testing of this U.L. recognized fabric is not required on approved panels from participating manufacturers.

*Certification Marks owned by the Association for Contract Textiles, Inc.

CLEAN IMPACT **TEXTILES**

duvaltex

duvaltex

USA & INTERNATIONAL | T 800-544-0200
CANADA | T 418 227-9897
For samples, visit duvaltex.com



FC-2195 26/02

