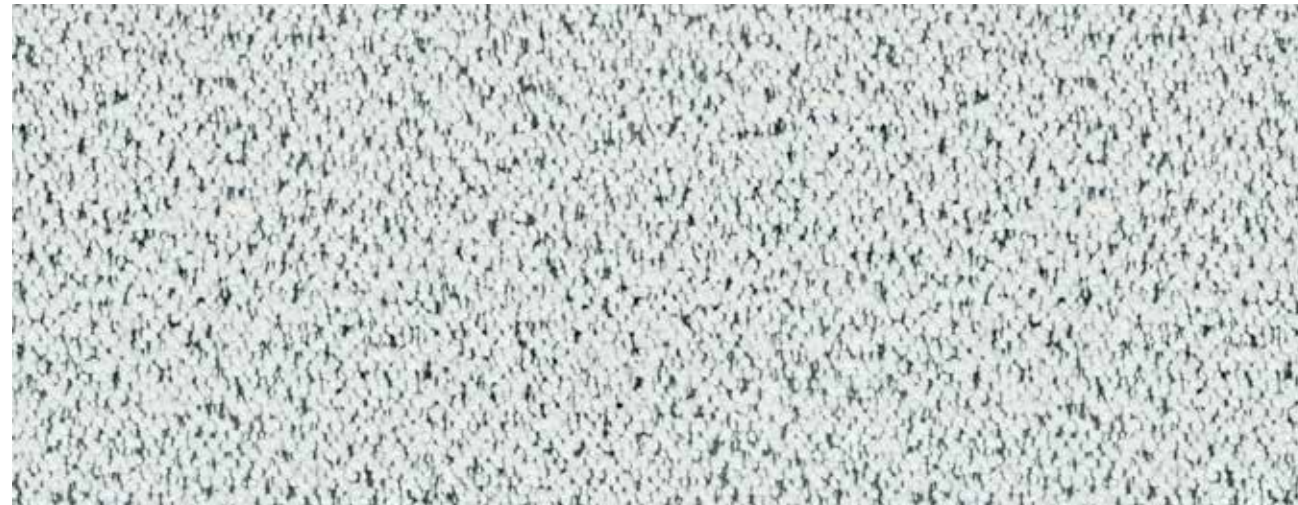


Biodegradable*

Seating

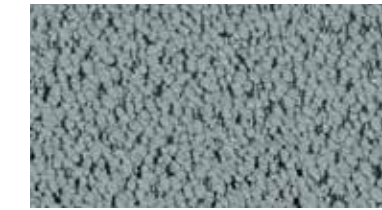
Cocoon 2198



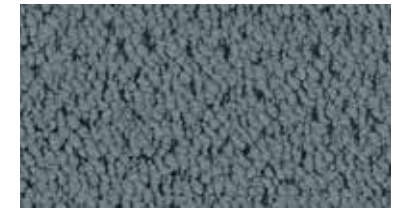
Snowfall
221



Nimbus
227



Overcast
222



Stormcloud
223



Tawny
228



Serene
237



Nocturne
224



Lamb
226



Flaxen
231



Mist
236



Embergray
229



Odyssey
238



Raven
225



Madder
232



Maple
233



Loden
239



Cherry Fig
234



Heather
235



Blue Chroma
240



Carob
230

Cocoon 2198

CLEAN IMPACT **TEXTILES**[®]

Specifications

Content	100% post-consumer recycled biodegradable* polyester
Weight	19 ± 1.0 oz./lin. yd 430 g/m ² (± 5%)
Width	54" min. useable 137 cm min. useable
Repeat	none

Cleaning Code

Standard Care Label W-S. Clean with water based cleaning agents, foam or pure, water free solvents. Vacuuming or light brushing is recommended to prevent dust and soil buildup. May also be disinfected with hydrogen peroxide, alcohol, and quaternary ammonium (quat) based cleaners.

Miscellaneous

- Application testing of this product is recommended.
- Colors may vary between dye lots.
- This is a directional fabric.






Sustainability

BIODEGRADABLE* CLEAN IMPACT TEXTILES[®] address the daunting problem of how to deal with polyester fabric at the end of its useful life.

Biodegradable* in landfill after 1,278 days
(tested under ASTM D5511)

* Rate and extent of biodegradation into elements found in nature is 91% after 1,278 days under ASTM D5511 (Anaerobic Biodegradation of Plastic Materials Under High Solids Anaerobic Digestion Conditions). The test was done with the same component (PET) polyester and biocatalyst additive. No evidence of further degradation.

Performance

	Colorfastness to light (AATCC 16.3 Option 3) Grade 4 min. at 40 hours
	Colorfastness to crocking (AATCC 8) Grade 4 min. dry & Grade 4 min. wet
	Breaking Strength (ASTM D5034) 195 lbf min. warp and 224 lbf fill
	Seam Slippage (ASTM D4034) 139 lbf min. warp and 132 lbf min. fill
	Pilling Resistance (ASTM D3511) Class 3.5 min.
	Flammability CA Technical Bulletin 117-2013 Section 1 NFPA 260-2013 Class I EN 1021-1 Cigarette EN 1021-2 Match Flammability performance may vary depending on the substrate used.
	Abrasion (ASTM D4157) Wyzenbeek Abrasion Resistance (ASTM D4157) 100,000 double rubs min. cotton duck Martindale Abrasion Resistance (ISO 12947-2) 100,000 cycles

Certification Marks owned by the Association for Contract Textiles, Inc.

duvaltex

USA & INTERNATIONAL | T 800-544-0200
CANADA | T 418 227-9897
For samples, visit [duvaltex.com](https://www.duvaltex.com)



FC-2198 26/02