

# SEATING TEXTILES

## DIGITAL BINDER



duvaltex

Recycled Content  
Stain Repellent

Seating | Panel | Acoustic

BeeHave 3948

BeeHave 3948

Seating | Panel | Acoustic

Specifications

Content	65% pre-consumer recycled polyester 35% post-consumer recycled polyester
Weight	12.1 ± 1.0 oz./lin. yd
Width	54" min. useable
Repeat	1.1" vertical   .75" horizontal
Treatment	stain repellent

Cleaning Code

Standard Care Label W-S. Clean with water based cleaning agents, foam or pure, water free solvents. Vacuuming or light brushing is recommended to prevent dust and soil buildup. May also be disinfected with hydrogen peroxide, alcohol, and quaternary ammonium (quat) based cleaners.

Miscellaneous






- Application testing of this product is recommended.
- Colors may vary between dye lots.
- This is a directional fabric.

Proudly woven in North America supporting our local communities.

Sustainability

100% recycled and recyclable

Performance


	<b>Colorfastness to light (AATCC 16.3 Option 3)</b> Grade 4 min. at 40 hours
	<b>Colorfastness to crocking (AATCC 8)</b> Grade 4 min. dry & Grade 3 min. wet
	<b>Breaking Strength (ASTM D5034)</b> 250 lbf min. warp and 175 lbf min. fill
	<b>Seam Slippage (ASTM D4034)</b> 50 lbf min. warp and 40 lbf min. fill
	<b>Pilling Resistance (ASTM D3511)</b> Class 4 min.
	<b>Flammability</b> CA Technical Bulletin 117-2013 Section 1 ASTM E84 Class I or A
	<b>Abrasion (ASTM D4157)</b> 75,000 double rubs min. cotton duck

Acoustical Performance

Our acoustic fabrics are all acoustically transparent. This represents the amount of sound that passes through the fabric.

Acoustic Transparency:	95%
------------------------	-----

For more detailed results, please consult our website.

 This pattern is included in the underwriters laboratory panel fabric recognition program. Additional testing of this U.L. recognized fabric is not required on approved panels from participating manufacturers.

\*Certification Marks owned by the Association for Contract Textiles, Inc.

Gris  
2701

Lemon  
2805

Clementine  
2804

Azure  
2696

Slate  
2703

Currant  
2802

Carnelian  
2803

Lapis  
2807

Black  
2702

Plum  
2801

Java  
2704

Concord  
2808

duvaltex

USA & INTERNATIONAL | T 800-544-0200  
CANADA | T 418 227-9897  
For samples, visit [duvaltex.com](https://duvaltex.com)

Stain Repellent

Seating

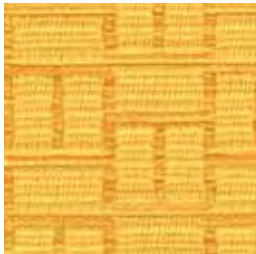
Cadence 5595



Turquoise  
1442



Pearl  
1431



Citrine  
1435



Peridot  
1440



Jade  
1441



Opal  
1432



Topaz  
1436



Ruby  
1438



Sapphire  
1443



Quartz  
1433



Coral  
1437



Garnet  
1439



Lapis  
1444



Jet  
1434

duvaltex

Cadence 5595

Seating

Specifications

Content	90% polyester 6% pre-consumer recycled polyester 4% post-consumer recycled polyester
Weight	12.9 ± 1.0 oz./lin. yd
Width	54" min. useable
Repeat	1.5" vertical   2" horizontal
Backing	acrylic backcoating
Treatment	stain repellent

Cleaning Code

Standard Care Label W-S. Clean with water based cleaning agents, foam or pure, water free solvents. Vacuuming or light brushing is recommended to prevent dust and soil buildup. May also be disinfected with hydrogen peroxide, alcohol, and quaternary ammonium (quat) based cleaners.

Miscellaneous

- Application testing of this product is recommended.
- Colors may vary between dye lots.
- This is a directional fabric.

Proudly woven in North America supporting our local communities.

Sustainability



duvaltex

Performance

	<b>Colorfastness to light (AATCC 16.3 Option 3)</b> Grade 4 min. at 40 hours
	<b>Colorfastness to crocking (AATCC 8)</b> Grade 4 min. dry & Grade 3 min. wet
	<b>Breaking Strength (ASTM D5034)</b> 200 lbf warp and 155 lbf fill
	<b>Seam Slippage (ASTM D4034)</b> 100 lbf warp and 45 lbf fill
	<b>Pilling Resistance (ASTM D3511)</b> Class 4
	<b>Flammability</b> CA Technical Bulletin 117-2013 Section 1
	<b>Abrasion (ASTM D4157)</b> 100,000 double rubs cotton duck

\*Certification Marks owned by the Association for Contract Textiles, Inc.

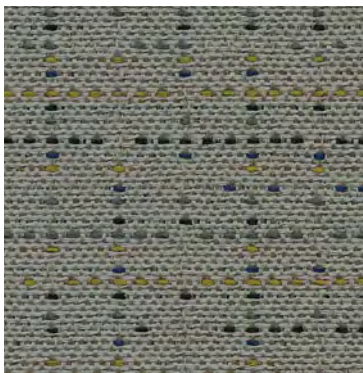
USA & INTERNATIONAL | T 800-544-0200  
CANADA | T 418 227-9897  
For samples, visit [duvaltex.com](https://duvaltex.com)



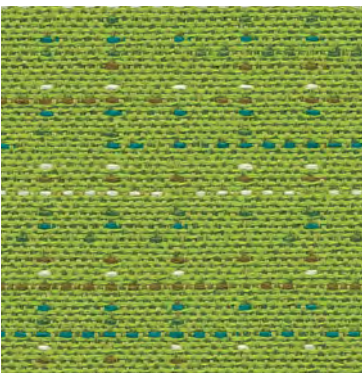
Stain Repellent

Seating | Panel

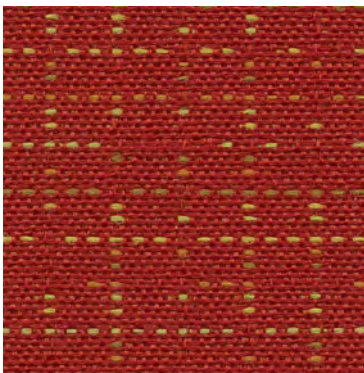
# Couture 4858



Thimble  
1756



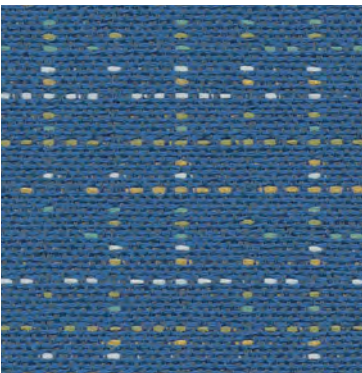
Thread  
1755



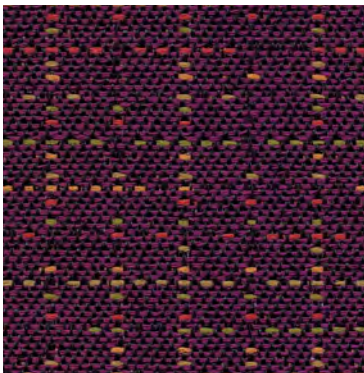
Basting  
1751



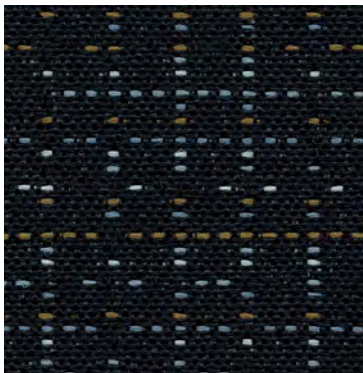
Shears  
1750



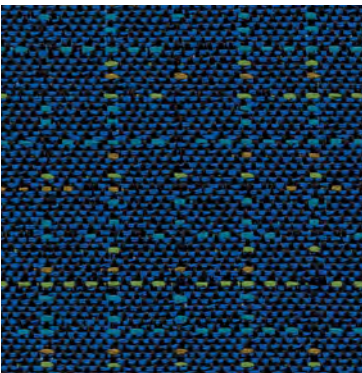
Crewel  
1758



Needlework  
1753



Seam  
1752



Tailor  
1757

duvaltex

# Couture 4858

Seating | Panel

## Specifications

Content	57% post-consumer recycled polyester 25% pre-consumer recycled polyester 18% polyester
Weight	9.2 ± 1.0 oz./lin. yd
Width	54" min. useable
Repeat	14.5" vertical   14" horizontal
Backing	acrylic backcoating
Treatment	stain repellent

## Cleaning Code

Standard Care Label W-S. Clean with water based cleaning agents, foam or pure, water free solvents. Vacuuming or light brushing is recommended to prevent dust and soil buildup. May also be disinfected with hydrogen peroxide, alcohol, and quaternary ammonium (quat) based cleaners.

## Miscellaneous

- Application testing of this product is recommended.
- Colors may vary between dye lots.
- This is a directional fabric.






Proudly woven in North America supporting our local communities.


## Sustainability



duvaltex

## Performance

	<b>Colorfastness to light (AATCC 16.3 Option 3)</b> Grade 4 min. at 40 hours
	<b>Colorfastness to crocking (AATCC 8)</b> Grade 4 min. dry & Grade 3 min. wet
	<b>Breaking Strength (ASTM D5034)</b> 115 lbf warp and 85 lbf fill
	<b>Seam Slippage (ASTM D4034)</b> 55 lbf warp and 60 lbf fill
	<b>Pilling Resistance (ASTM D3511)</b> Class 5
	<b>Flammability</b> CA Technical Bulletin 117-2013 Section 1 ASTM E84 Class I or A
	<b>Abrasion (ASTM D4157)</b> 100,000 double rubs cotton duck

 This pattern is included in the underwriters laboratory panel fabric recognition program. Additional testing of this U.L. recognized fabric is not required on approved panels from participating manufacturers.

\*Certification Marks owned by the Association for Contract Textiles, Inc.

USA & INTERNATIONAL | T 800-544-0200  
CANADA | T 418 227-9897  
For samples, visit [duvaltex.com](https://duvaltex.com)

Biodegradable\*  
Recycled Content  
Bleach Cleanable

Seating

# Emerge 2178

Citrine  
902

Cloud  
911

Atmosphere  
910

Featherstone  
913

Clay  
904

Parchment  
901

Aloe  
908

Cobalt  
909

Graphite  
914

Smoke  
912

Terra Rose  
903

Cerise  
905

Emerald  
907

Squid Ink  
906

Evening  
915

Specifications

Content	81% post-consumer recycled biodegradable* polyester 19% pre-consumer recycled biodegradable* polyester
Weight	12.4 ± 1.0 oz./lin. yd
Width	54" min. useable
Repeat	12" horizontal   18.25" vertical
Backing	none
Treatment	none

Cleaning Code

Standard Care Label W-S. Clean with water based cleaning agents, foam or pure, water free solvents. Vacuuming or light brushing is recommended to prevent dust and soil buildup.

**Bleach Cleanable** - May be cleaned with a 10% bleach-to-water solution. Rinse well after cleaning. May also be disinfected with hydrogen peroxide, alcohol, and quaternary ammonium (quat) based cleaners.

Miscellaneous

- Application testing of this product is recommended.
- Colors may vary between dye lots.
- This is a directional fabric.

Proudly woven in North America supporting our local communities.






Sustainability

**BIODEGRADABLE\* CLEAN IMPACT TEXTILES<sup>®</sup>**  
 address the daunting problem of how to deal with polyester fabric at the end of its useful life.

Biodegradable\* in landfill after 1,278 days (tested under ASTM D5511)

\*Rate and extent of biodegradation into elements found in nature is 91% after 1,278 days under ASTM D5511 (Anaerobic Biodegradation of Plastic Materials Under High Solids Anaerobic Digestion Conditions). The test was done with the same component (PET) polyester and biocatalyst additive. No evidence of further degradation.

Performance

	<b>Colorfastness to light (AATCC 16.3 Option 3)</b> Grade 4.5 min. at 40 hours
	<b>Colorfastness to crocking (AATCC 8)</b> Grade 4 min. dry & Grade 4 min. wet
	<b>Breaking Strength (ASTM D5034)</b> 265 lbf min. warp and 286 lbf min. fill
	<b>Seam Slippage (ASTM D4034)</b> 108 lbf min. warp and 106 lbf min. fill
	<b>Pilling Resistance (ASTM D3511)</b> Class 4 min.
	<b>Flammability</b> CA Technical Bulletin 117-2013 Section 1 NFPA 260-2013 Class I
	<b>* Abrasion (ASTM D4157)</b> 100,000 double rubs min. cotton duck

\*Multiple factors affect fabric durability and appearance retention, including end-user application and proper maintenance. Wyzenbeek results above 100,000 double rubs have not been shown to be an indicator of increased lifespan.

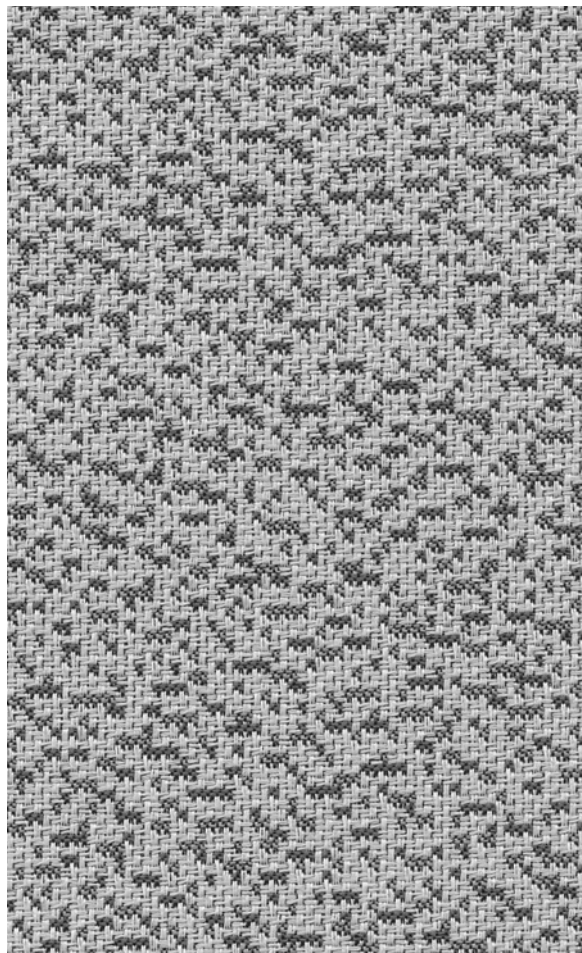
Certification Marks owned by the Association for Contract Textiles, Inc.



Recycled Content  
Bleach Cleanable  
Stain Repellent

Seating

Excerpt 9532/9533



Zebra  
9532-5020



Steel  
9532-5010



Morel  
9533-5031



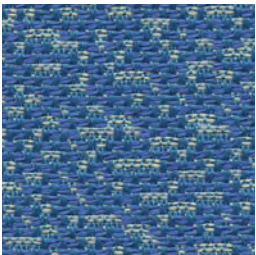
Nougat  
9533-5030



Lawn  
9533-5070



Crimson  
9533-5050



Royal  
9533-5060



Navy  
9533-5041



Charcoal  
9533-5040

duvaltex

Excerpt 9532/9533

Seating

Specifications

Content	78% post-consumer recycled polyester 22% pre-consumer recycled polyester
Weight	12.9 ± 1.0 oz./lin. yd
Width	54" min. useable
Repeat	2.75" vertical   4.75" horizontal
Backing	Acrylic backcoating
Treatment	stain repellent

Cleaning Code

Standard Care Label W-S. Clean with water based cleaning agents, foam or pure, water free solvents. Vacuuming or light brushing is recommended to prevent dust and soil buildup.

**Bleach Cleanable** - May be cleaned with a 10% bleach-to-water solution. Rinse well after cleaning. May also be disinfected with hydrogen peroxide, alcohol, and quaternary ammonium (quat) based cleaners.

Miscellaneous

- Application testing of this product is recommended.
- Colors may vary between dye lots.
- This is a directional fabric.

**Proudly woven in North America supporting our local communities.**

Sustainability

100% recycled and recyclable



Performance

	<b>Colorfastness to light (AATCC 16.3 Option 3)</b> Grade 4 min. at 40 hours
	<b>Colorfastness to crocking (AATCC 8)</b> Grade 4 min. dry & Grade 3 min. wet
	<b>Breaking Strength (ASTM D5034)</b> 175 lbf warp and 200 lbf fill
	<b>Seam Slippage (ASTM D4034)</b> 60 lbf warp and 50 lbf fill
	<b>Pilling Resistance (ASTM D3511)</b> Class 4 min.
	<b>Flammability</b> CA Technical Bulletin 117-2013 Section 1
	<b>Abrasion (ASTM D4157)</b> 100,000 double rubs cotton duck

\*Certification Marks owned by the Association for Contract Textiles, Inc.

duvaltex

USA & INTERNATIONAL | T 800-544-0200  
CANADA | T 418 227-9897  
For samples, visit [duvaltex.com](https://duvaltex.com)



Stain Repellent

Seating

# Frolic 5000



Navy  
0014



Rust  
0032



Red  
0002



Mulberry  
0012



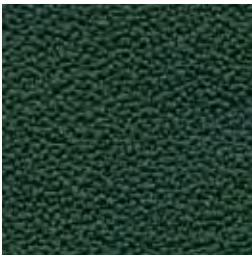
Aubergine  
0072



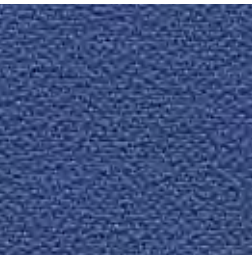
Cactus  
0017



Atlantic  
0037



Pine  
0007



Blue  
0004



Slate  
0011



Ink  
0006

duvaltex

# Frolic 5000

Seating

## Specifications

Content	100% polyester
Weight	16.7 ± 1.0 oz./lin. yd
Width	54" min. useable
Repeat	none
Backing	acrylic backcoating
Treatment	stain repellent

## Cleaning Code






Standard Care Label W-S. Clean with water based cleaning agents, foam or pure, water free solvents. Vacuuming or light brushing is recommended to prevent dust and soil buildup. May also be disinfected with hydrogen peroxide, alcohol, and quaternary ammonium (quat) based cleaners.

## Miscellaneous

- Application testing of this product is recommended.
- Colors may vary between dye lots.
- This is a directional fabric.

Proudly woven in North America supporting our local communities.

## Performance

	<b>Colorfastness to light (AATCC 16.3 Option 3)</b> Grade 4 min. at 40 hours
	<b>Colorfastness to crocking (AATCC 8)</b> Grade 4 min. dry & Grade 3 min. wet
	<b>Breaking Strength (ASTM D5034)</b> 250 lbf min. warp and fill
	<b>Seam Slippage (ASTM D4034)</b> 50 lbf min. warp and fill
	<b>Pilling Resistance (ASTM D3511)</b> Class 4 min.
	<b>Flammability</b> CA Technical Bulletin 117-2013 Section 1
	<b>Abrasion (ASTM D4157)</b> 1,000,000 double rubs min. cotton duck

\*Certification Marks owned by the Association for Contract Textiles, Inc.

duvaltex

USA & INTERNATIONAL | T 800-544-0200  
CANADA | T 418 227-9897  
For samples, visit [duvaltex.com](https://duvaltex.com)



Recycled Content  
Bleach Cleanable

Seating

Input 5598

		Tiffany 1480	Lime 1477	Squash 1488
	Cloud 1471	Sky 1481	Mint 1479	Flame 1487
Bisque 1476	Dove 1472	Delft 1482	Pine 1478	Crimson 1486
Fossil 1475	Coal 1473	Midnight 1483	Orchid 1484	Raisin 1485
Jet 1474				

Input 5598

Seating

Specifications

Content	94% post-consumer recycled polyester 6% pre-consumer recycled polyester
Weight	11.0 ± 1.0 oz./lin. yd
Width	54" min. useable
Repeat	2.5" vertical   12.25" horizontal

Cleaning Code

Standard Care Label W-S. Clean with water based cleaning agents, foam or pure, water free solvents. Vacuuming or light brushing is recommended to prevent dust and soil buildup.

**Bleach Cleanable** - May be cleaned with a 10% bleach-to-water solution. Rinse well after cleaning. May also be disinfected with hydrogen peroxide, alcohol, and quaternary ammonium (quat) based cleaners.

Performance

	<b>Colorfastness to light (AATCC 16.3 Option 3)</b> Grade 4 min. at 40 hours
	<b>Colorfastness to crocking (AATCC 8)</b> Grade 4 min. dry & Grade 3 min. wet
	<b>Breaking Strength (ASTM D5034)</b> 290 lbf warp and 250 lbf fill
	<b>Seam Slippage (ASTM D4034)</b> 110 lbf warp and 75 lbf fill
	<b>Pilling Resistance (ASTM D3511)</b> Class 4 min.
	<b>Flammability</b> CA Technical Bulletin 117-2013 Section 1
	<b>Abrasion (ASTM D4157)</b> 100,000 double rubs cotton duck

\*Certification Marks owned by the Association for Contract Textiles, Inc.

Miscellaneous

- Application testing of this product is recommended.
- Colors may vary between dye lots.
- This is a directional fabric.

Proudly woven in North America supporting our local communities.

Sustainability

100% recycled and recyclable



Stain Repellent

Seating | Panel | Acoustic

Intuition 4856

Intuition 4856

Seating | Panel | Acoustic

Specifications

Content	55% post-consumer recycled polyester 34% pre-consumer recycled polyester 11% polyester
Weight	11.2 ± 1.0 oz./lin. yd
Width	54" min. useable
Repeat	none
Backing	acrylic backcoating
Treatment	stain repellent

Cleaning Code

Standard Care Label W-S. Clean with water based cleaning agents, foam or pure, water free solvents. Vacuuming or light brushing is recommended to prevent dust and soil buildup. May also be disinfected with hydrogen peroxide, alcohol, and quaternary ammonium (quat) based cleaners.

Miscellaneous

- Application testing of this product is recommended.
- Colors may vary between dye lots.
- This is a directional fabric.

Proudly woven in North America supporting our local communities.

Sustainability



Performance

	<b>Colorfastness to light (AATCC 16.3 Option 3)</b> Grade 4 min. at 40 hours
	<b>Colorfastness to crocking (AATCC 8)</b> Grade 4 min. dry & Grade 3 min. wet
	<b>Breaking Strength (ASTM D5034)</b> 210 lbf warp and 200 lbf fill
	<b>Seam Slippage (ASTM D4034)</b> 30 lbf warp and 45 lbf fill
	<b>Pilling Resistance (ASTM D3511)</b> Class 4 min.
	<b>Flammability</b> CA Technical Bulletin 117-2013 Section 1 ASTM E84 Class I or A
	<b>Abrasion (ASTM D4157)</b> 100,000 double rubs cotton duck

Acoustical Performance

Our acoustic fabrics are all acoustically transparent. This represents the amount of sound that passes through the fabric.

Acoustic Transparency: 95%

For more detailed results, please consult our website.

This pattern is included in the underwriters laboratory panel fabric recognition program. Additional testing of this U.L. recognized fabric is not required on approved panels from participating manufacturers.

\*Certification Marks owned by the Association for Contract Textiles, Inc.

Coral  
1714

Honey  
1716

Viridian  
1723

Platinum  
1717

Ochre  
1718

Sage  
1721

Peacock  
1722

Slate  
1719

Scarlet  
1720

Hickory  
1715

Admiral  
1724

Charcoal  
1712

duvaltex

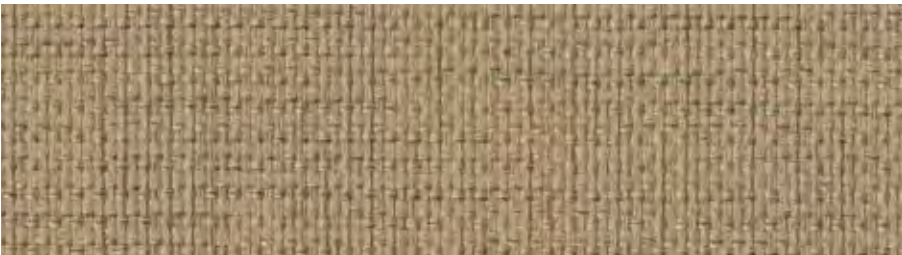
USA & INTERNATIONAL | T 800-544-0200  
CANADA | T 418 227-9897  
For samples, visit [duvaltex.com](https://duvaltex.com)



Stain Repellent

Seating | Panel | Acoustic

# Intuition 4856



Sand  
1713



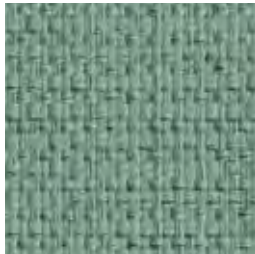
Bisque  
1711



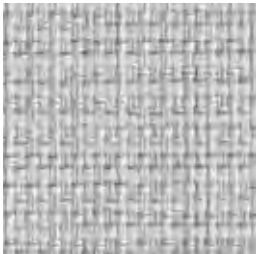
Coral  
1714



Honey  
1716



Viridian  
1723



Platinum  
1717



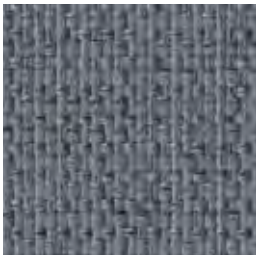
Ochre  
1718



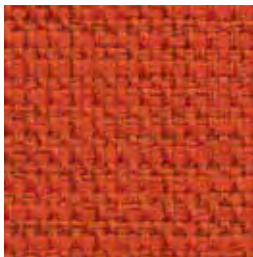
Sage  
1721



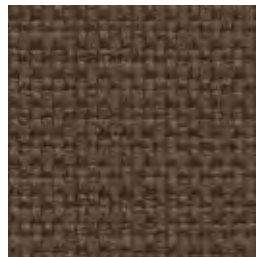
Peacock  
1722



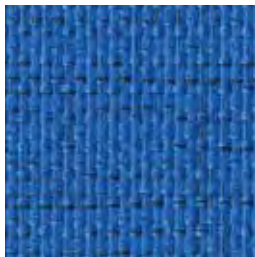
Slate  
1719



Scarlet  
1720



Hickory  
1715



Admiral  
1724



Charcoal  
1712

duvaltex

# Intuition 4856

Seating | Panel | Acoustic

## Specifications

Content	55% post-consumer recycled polyester 34% pre-consumer recycled polyester 11% polyester
Weight	11.2 ± 1.0 oz./lin. yd
Width	54" min. useable
Repeat	none
Backing	acrylic backcoating
Treatment	stain repellent

## Cleaning Code

Standard Care Label W-S. Clean with water based cleaning agents, foam or pure, water free solvents. Vacuuming or light brushing is recommended to prevent dust and soil buildup. May also be disinfected with hydrogen peroxide, alcohol, and quaternary ammonium (quat) based cleaners.

## Miscellaneous






- Application testing of this product is recommended.
- Colors may vary between dye lots.
- This is a directional fabric.

Proudly woven in North America supporting our local communities.

## Sustainability



## Performance


	<b>Colorfastness to light (AATCC 16.3 Option 3)</b> Grade 4 min. at 40 hours
	<b>Colorfastness to crocking (AATCC 8)</b> Grade 4 min. dry & Grade 3 min. wet
	<b>Breaking Strength (ASTM D5034)</b> 210 lbf warp and 200 lbf fill
	<b>Seam Slippage (ASTM D4034)</b> 30 lbf warp and 45 lbf fill
	<b>Pilling Resistance (ASTM D3511)</b> Class 4 min.
	<b>Flammability</b> CA Technical Bulletin 117-2013 Section 1 ASTM E84 Class I or A
	<b>Abrasion (ASTM D4157)</b> 100,000 double rubs cotton duck

## Acoustical Performance

Our acoustic fabrics are all acoustically transparent. This represents the amount of sound that passes through the fabric.

Acoustic Transparency:	95%
------------------------	-----

For more detailed results, please consult our website.

 This pattern is included in the underwriters laboratory panel fabric recognition program. Additional testing of this U.L. recognized fabric is not required on approved panels from participating manufacturers.

\*Certification Marks owned by the Association for Contract Textiles, Inc.

duvaltex

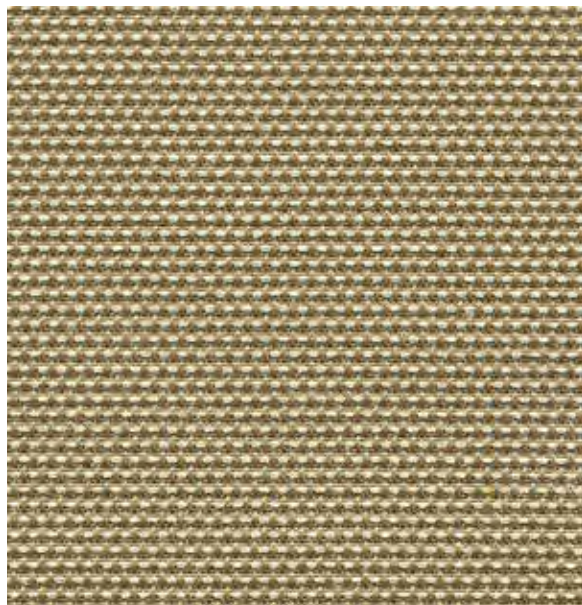
USA & INTERNATIONAL | T 800-544-0200  
CANADA | T 418 227-9897  
For samples, visit [guilfordofmaine.com](https://www.guilfordofmaine.com)



Recycled Content  
Bleach Cleanable  
Stain Repellent

Seating | Panel | Acoustic

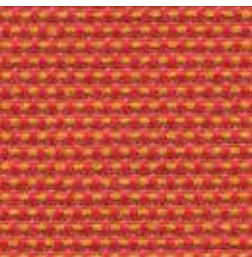
# Jane 9085



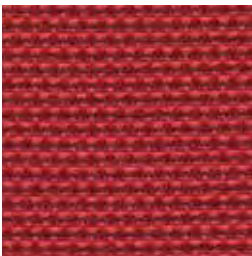
Natural  
4061



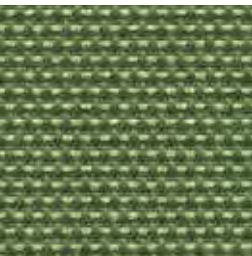
Gold  
4020



Persimmon  
4050



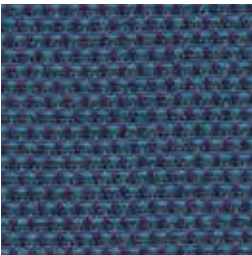
Pomegranate  
4081



Chive  
4070



Steel  
4100



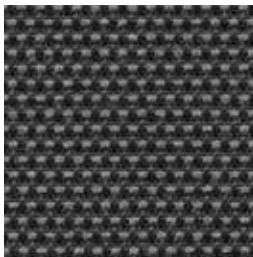
Blueberry  
4091



Ultramarine  
4030



Lapis  
4041



Jet  
4040

# Jane 9085

Seating | Panel | Acoustic

## Specifications

Content	100% pre-consumer recycled polyester
Weight	9.7 ± 0.5 oz./lin. yd
Width	54" min. useable
Repeat	none
Treatment	stain repellent

## Cleaning Code

Standard Care Label W-S. Clean with water based cleaning agents, foam or pure, water free solvents. Vacuuming or light brushing is recommended to prevent dust and soil buildup.

**Bleach Cleanable** - May be cleaned with a 10% bleach-to-water solution. Rinse well after cleaning. May also be disinfected with hydrogen peroxide, alcohol, and quaternary ammonium (quat) based cleaners.

## Miscellaneous

- Application testing of this product is recommended.
- Colors may vary between dye lots.
- This is a directional fabric.

Proudly woven in North America supporting our local communities.

## Sustainability

100% recycled and recyclable



## Performance



**Colorfastness to light (AATCC 16.3 Option 3)**  
Grade 4 min. at 40 hours



**Colorfastness to crocking (AATCC 8)**  
Grade 4 min. dry & Grade 3 min. wet

**Breaking Strength (ASTM D5034)**  
200 lbf min. warp and 130 lbf min. fill



**Seam Slippage (ASTM D4034)**  
50 lbf min. warp and fill

**Pilling Resistance (ASTM D3511)**  
Class 4 min.



**Flammability**  
CA Technical Bulletin 117-2013 Section 1  
ASTM E84 Class I or A



**Abrasion (ASTM D4157)**  
50,000 double rubs min. cotton duck

## Acoustical Performance

Our acoustic fabrics are all acoustically transparent. This represents the amount of sound that passes through the fabric.

Acoustic Transparency: 90%

For more detailed results, please consult our website.



This pattern is included in the underwriters laboratory panel fabric recognition program. Additional testing of this U.L. recognized fabric is not required on approved panels from participating manufacturers.

\*Certification Marks owned by the Association for Contract Textiles, Inc.

duvaltex

duvaltex

USA & INTERNATIONAL | T 800-544-0200  
CANADA | T 418 227-9897  
For samples, visit [duvaltex.com](https://duvaltex.com)



Recycled Content

Seating

# Moguls 2386



Birch  
2243



Sand  
2196



Honeycomb  
2190



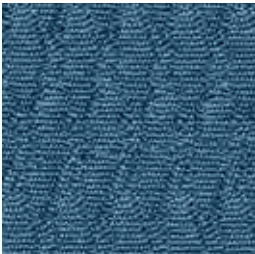
Mandarin  
2245



Verdant  
2244



Thistle  
2194



Waterfall  
2691



Rhododendron  
2191



Flare  
2188



Grape Jelly  
2195



Graphite  
2197



Navy  
2231



Onyx  
2199

duvaltex

# Moguls 2386

Seating

## Specifications

Content	65% pre-consumer recycled polyester 35% post-consumer recycled polyester
Weight	13.4 ± 0.5 oz./lin. yd
Width	54" min. useable
Repeat	.8" vertical   .26" horizontal

## Cleaning Code

Standard Care Label W-S. Clean with water based cleaning agents, foam or pure, water free solvents. Vacuuming or light brushing is recommended to prevent dust and soil buildup. May also be disinfected with hydrogen peroxide, alcohol, and quaternary ammonium (quat) based cleaners.

## Miscellaneous

- Application testing of this product is recommended.
- Colors may vary between dye lots.
- This is a directional fabric.

Proudly woven in North America supporting our local communities.

## Sustainability

100% recycled and recyclable

## Performance

	<b>Colorfastness to light (AATCC 16.3 Option 3)</b> Grade 4 min. at 40 hours
	<b>Colorfastness to crocking (AATCC 8)</b> Grade 4 min. dry & Grade 3 min. wet
	<b>Breaking Strength (ASTM D5034)</b> 250 lbf warp and 180 lbf min. fill
	<b>Seam Slippage (ASTM D4034)</b> 60 lbf min. warp and fill
	<b>Pilling Resistance (ASTM D3511)</b> Class 4
	<b>Flammability</b> CA Technical Bulletin 117-2013 Section 1
	<b>Abrasion (ASTM D4157)</b> 100,000 double rubs min. cotton duck

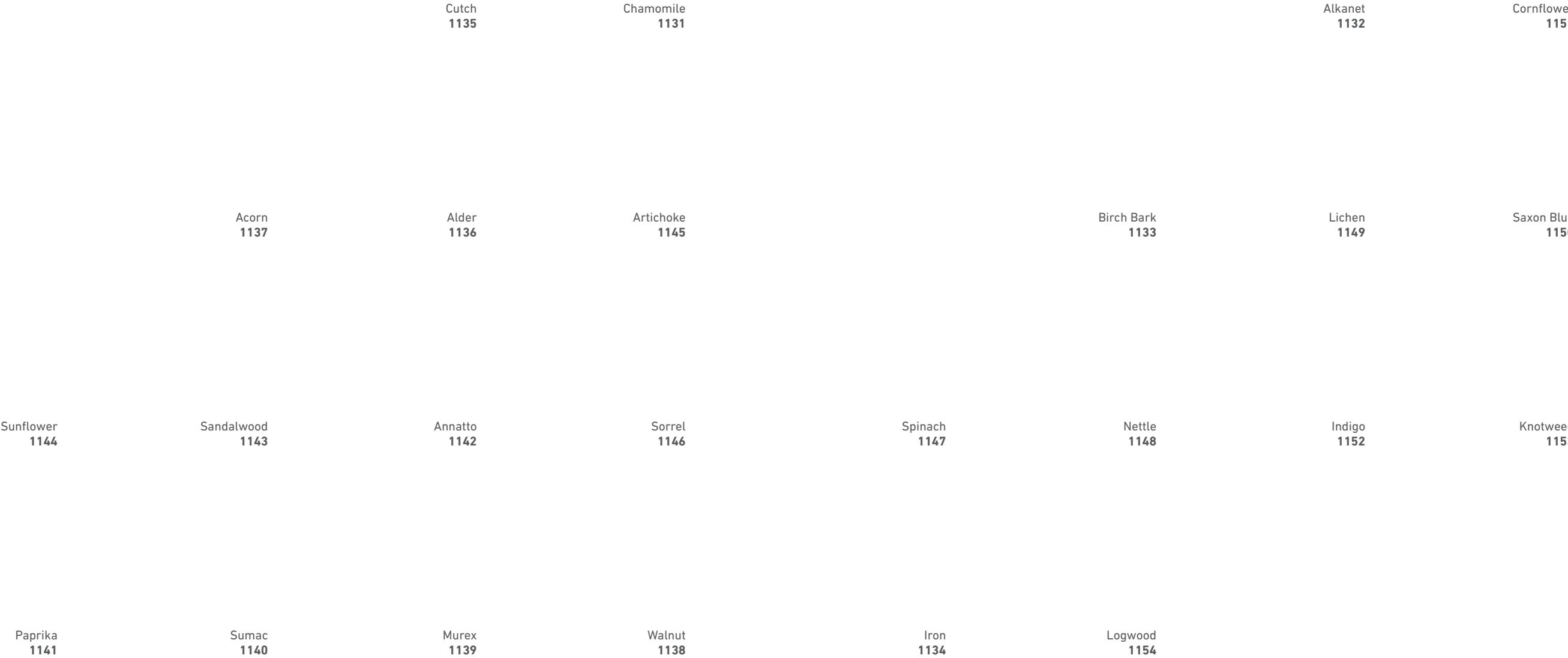
\*Multiple factors affect fabric durability and appearance retention, including end-user application and proper maintenance. Wyzenbeek results above 100,000 double rubs have not been shown to be an indicator of increased lifespan.  
Certification Marks owned by the Association for Contract Textiles, Inc.

duvaltex

USA & INTERNATIONAL | T 800-544-0200  
CANADA | T 418 227-9897  
For samples, visit [duvaltex.com](https://www.duvaltex.com)

Seating | Panel | Acoustic

# Palette 2155





Specifications

Content	100% polyester
Weight	12 ± 1.0 oz./lin. yd
Width	54" min. useable
Repeat	none

Cleaning Code

Standard Care Label W-S. Clean with water based cleaning agents, foam or pure, water free solvents. Vacuuming or light brushing is recommended to prevent dust and soil buildup. May also be disinfected with hydrogen peroxide, alcohol, and quaternary ammonium (quat) based cleaners.

Miscellaneous






- Application testing of this product is recommended.
- Colors may vary between dye lots.
- This is a directional fabric.

Proudly woven in North America supporting our local communities.

Sustainability



Performance


	<b>Colorfastness to light (AATCC 16.3 Option 3)</b> Grade 4 min. at 40 hours
	<b>Colorfastness to crocking (AATCC 8)</b> Grade 4 min. dry & Grade 3 min. wet
	<b>Breaking Strength (ASTM D5034)</b> 295 lbf min. warp and 280 lbf fill
	<b>Seam Slippage (ASTM D4034)</b> 85 lbf min. warp and 75 lbf fill
	<b>Pilling Resistance (ASTM D3511)</b> Class 4 min.
	<b>Flammability</b> ASTM E84 Class I or A
	<b>Abrasion (ASTM D4157)</b> 100,000 double rubs min. cotton duck

Acoustical Performance

Our acoustic fabrics are all acoustically transparent. This represents the amount of sound that passes through the fabric.

Acoustic Transparency:	90%
------------------------	-----

For more detailed results, please consult our website.

 This pattern is included in the underwriters laboratory panel fabric recognition program. Additional testing of this U.L. recognized fabric is not required on approved panels from participating manufacturers.

\*Certification Marks owned by the Association for Contract Textiles, Inc.

Recycled Content  
Bleach Cleanable

Seating | Panel | Acoustic

Anchorage 2335 | Open House 2334

<div>White* 2664</div>	<div>Shadow† 6694</div>	<div>Birch 2129</div>	<div>Vanilla 2130</div>	<div>Angora 2035</div>	<div>Asteroid 2053</div>	<div>Goose 2049</div>	<div>Fossil 2093</div>	<div>Graphite 2079</div>	<div>Coffee Bean 2083</div>
<div>Slate 2017</div>	<div>Wolf 2027</div>	<div>Quarry Blue 2026</div>	<div>Lapis 2094</div>	<div>Deep Water 2051</div>	<div>Waterfall 2691</div>	<div>Pool 2842</div>	<div>Thistle 2085</div>	<div>Cobalt 2045</div>	<div>Midnight 2025</div>
<div>Cumin 2050</div>	<div>Eucalyptus 2047</div>	<div>Willow 2028</div>	<div>Green Apple 2087</div>	<div>Fern 2840</div>	<div>Turquoise 2841</div>	<div>Pine Needle 2022</div>	<div>Onyx 2016</div>	<div>Aubergine 2036</div>	
<div>Straw 2034</div>	<div>Lemon 2839</div>	<div>Sunshine 2082</div>	<div>Goldenrod 2090</div>	<div>Pumpkin 2021</div>					
<div>Geranium 2084</div>	<div>Red Delicious 2014</div>	<div>Poppy 2091</div>	<div>Orchid 2843</div>	<div>Mulberry 2044</div>					

\*Not recommended for use as Upholstery.



# Anchorage 2335

# Open House 2334

Seating | Panel | Acoustic

## Specifications

Content	65% pre-consumer recycled polyester 35% post-consumer recycled polyester
Weight	2334 - 13.1 ± 1.0 oz./lin. yd 2335 - 15.0 ± 1.0 oz./lin. yd
Width	2334 - 54" min. useable 2335 - 66" min. useable
Repeat	none

## Cleaning Code

Standard Care Label W-S. Clean with water based cleaning agents, foam or pure, water free solvents. Vacuuming or light brushing is recommended to prevent dust and soil buildup.

**Bleach Cleanable** - May be cleaned with a 10% bleach-to-water solution. Rinse well after cleaning. May also be disinfected with hydrogen peroxide, alcohol, and quaternary ammonium (quat) based cleaners.

## Miscellaneous

- Application testing of this product is recommended.
- Colors may vary between dye lots.
- Please specify when ordering whether 54" or 66" width is needed. Dye lots may vary. Differences may also occur between corresponding colors of Anchorage 2335 and Open House 2334.

**Proudly woven in North America supporting our local communities.**






## Sustainability

100% recycled and recyclable



Renowned for its exceptional performance and style, Guilford of Maine has set industry standards in acoustics and panel fabrics for many decades. We present the Guilford of Maine Collection - a selection of timeless fabrics.

## Performance

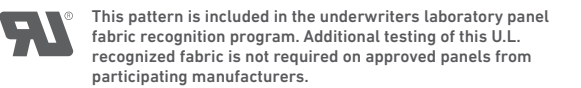
	<b>Colorfastness to light (AATCC 16.3 Option 3)</b> Grade 4 min. at 40 hours
	<b>Colorfastness to crocking (AATCC 8)</b> Grade 4 min. dry & Grade 3 min. wet
	<b>Breaking Strength (ASTM D5034)</b> 275 lbf min. warp and fill
	<b>Seam Slippage (ASTM D4034)</b> 50 lbf min. warp and fill
	<b>Pilling Resistance (ASTM D3511)</b> Class 4 min.
	<b>Flammability</b> CA Technical Bulletin 117-2013 Section 1 ASTM E84 Class I or A
	<b>Abrasion (ASTM D4157)</b> 250,000 double rubs min. cotton duck

## Acoustical Performance

Our acoustic fabrics are all acoustically transparent. This represents the amount of sound that passes through the fabric.

<b>Acoustic Transparency:</b>	85%
-------------------------------	-----

For more detailed results, please consult our website.



\*Multiple factors affect fabric durability and appearance retention, including end-user application and proper maintenance. Wyzenbeek results above 100,000 double rubs have not been shown to be an indicator of increased lifespan.

Certification Marks owned by the Association for Contract Textiles, Inc.

†Available in 66" only.

duvaltex

USA & INTERNATIONAL | T 800-544-0200  
CANADA | T 418 227-9897  
For samples, visit [duvaltex.com](https://www.duvaltex.com)

Stain Repellent

Seating

Pebble 4769



Schoolhouse  
1505



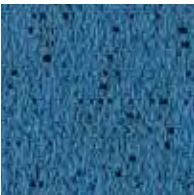
Sidari  
1500



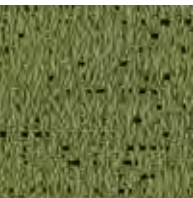
Nice  
1501



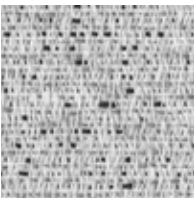
Papakolea  
1513



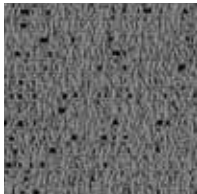
Waikiki  
1502



Negril  
1512



Mabua  
1506



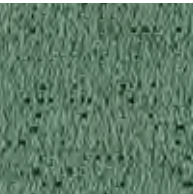
Langkawi  
1507



Red Beach  
1515



Siesta  
1503



Maybay  
1510



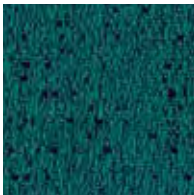
Tenerife  
1508



Copacabana  
1516



South Beach  
1504



Surfers Paradise  
1511

duvaltex

Pebble 4769

Seating

Specifications

Content	70% polyester 20% antimony-free polyester 7% pre-consumer recycled polyester 3% post-consumer recycled polyester
Weight	10.8 ± 1.0 oz./lin. yd
Width	54" min. useable
Repeat	31.6" vertical   12.75" horizontal
Backing	acrylic backcoating
Treatment	stain repellent

Cleaning Code

Standard Care Label W-S. Clean with water based cleaning agents, foam or pure, water free solvents. Vacuuming or light brushing is recommended to prevent dust and soil buildup. May also be disinfected with hydrogen peroxide, alcohol, and quaternary ammonium (quat) based cleaners.

Miscellaneous

- Application testing of this product is recommended.
- Colors may vary between dye lots.
- This is a directional fabric.

Proudly woven in North America supporting our local communities.

Sustainability



duvaltex

USA & INTERNATIONAL | T 800-544-0200  
CANADA | T 418 227-9897  
For samples, visit [duvaltex.com](https://duvaltex.com)

Performance

	<b>Colorfastness to light (AATCC 16.3 Option 3)</b> Grade 4 min. at 40 hours
	<b>Colorfastness to crocking (AATCC 8)</b> Grade 4 min. dry & Grade 3 min. wet
	<b>Breaking Strength (ASTM D5034)</b> 255 lbf warp and 130 lbf fill
	<b>Seam Slippage (ASTM D4034)</b> 110 lbf warp and 55 lbf fill
	<b>Pilling Resistance (ASTM D3511)</b> Class 4 min.
	<b>Flammability</b> CA Technical Bulletin 117-2013 Section 1
	<b>Abrasion (ASTM D4157)</b> 100,000 double rubs cotton duck

\*Certification Marks owned by the Association for Contract Textiles, Inc.



Recycled Content  
Bleach Cleanable

Seating

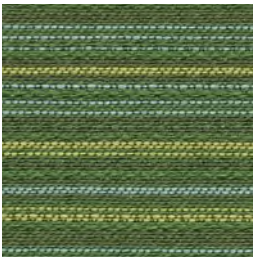
Phrase 9508



Maize  
3010



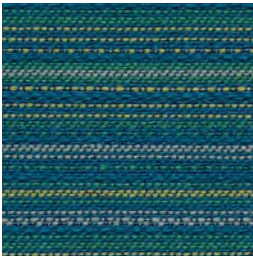
Nutmeg  
3051



Sprout  
3020



Truffle  
3050



Poolside  
3031



Soapstone  
3060



Marine  
3030



Cayenne  
3040



Shiraz  
3052



Shale  
3070



Admiral  
3071

duvaltex

Phrase 9508

Seating

Specifications

Content	100% post-consumer recycled polyester
Weight	12.6 ± 1.0 oz./lin. yd
Width	54" min. useable
Repeat	1.1875" vertical   none horizontal
Backing	Acrylic backcoating

Cleaning Code

Standard Care Label W-S. Clean with water based cleaning agents, foam or pure, water free solvents. Vacuuming or light brushing is recommended to prevent dust and soil buildup.


**Bleach Cleanable** - May be cleaned with a 10% bleach-to-water solution. Rinse well after cleaning. May also be disinfected with hydrogen peroxide, alcohol, and quaternary ammonium (quat) based cleaners.


Miscellaneous

- Application testing of this product is recommended.
- Colors may vary between dye lots.
- This is a directional fabric.

**Proudly woven in North America supporting our local communities.**

Performance

 **Colorfastness to light (AATCC 16.3 Option 3)**  
Grade 4 min. at 40 hours

 **Colorfastness to crocking (AATCC 8)**  
Grade 4 min. dry & Grade 3 min. wet

**Breaking Strength (ASTM D5034)**  
190 lbf warp and fill

 **Seam Slippage (ASTM D4034)**  
60 lbf warp and fill

**Pilling Resistance (ASTM D3511)**  
Class 4 min.

 **Flammability**  
CA Technical Bulletin 117-2013 Section 1

 **Abrasion (ASTM D4157)**  
100,000 double rubs cotton duck

\*Certification Marks owned by the Association for Contract Textiles, Inc.

duvaltex

USA & INTERNATIONAL | T 800-544-0200  
CANADA | T 418 227-9897  
For samples, visit [duvaltex.com](https://www.duvaltex.com)



# Poseidon 1306

Coralline 1294	Sea Spray 1290	Triggerfish 1281	Sargassum 1296
Red Algae 1285	Surf 1289	Ecosystem 1286	Beachrock 1295
Brittle Star 1284	Aquatic 1291	Kelp Forest 1287	Narwhal 1298
King Crab 1282	Sailfish 1292	Tidepool 1288	Manatee 1299
Archipelago 1283	Deep Blue 1293	Java Sea 1297	Orca 1300

# Poseidon 1306

## Specifications

Content	90% post-consumer recycled polyester including ocean waste 10% polyester
Weight	18 ± 1.0 oz./lin. yd
Width	54" min. useable
Repeat	none

## Cleaning Code

Standard Care Label W-S. Clean with water based cleaning agents, foam or pure, water free solvents. Vacuuming or light brushing is recommended to prevent dust and soil buildup. May also be disinfected with hydrogen peroxide, alcohol, and quaternary ammonium (quat) based cleaners.

## Miscellaneous

- Application testing of this product is recommended.
- Colors may vary between dye lots.
- This is a directional fabric.

**Proudly woven in North America supporting our local communities.**

## Sustainability






**OCEAN WASTE CLEAN IMPACT TEXTILES™**  
For every pound of fabric produced, up to half a pound of marine waste is removed from the ocean.

## SEAQUAL INITIATIVE

By partnering with the SEAQUAL INITIATIVE, we transform ocean waste into amazing textiles.

Duvaltex is an official and authorized advertiser of SEAQUAL<sup>®</sup> YARN, the SEAQUAL INITIATIVE and their related trademarks, under licence agreement. Only SEAQUAL licensees are permitted to publicly advertise details about SEAQUAL trademarks.

## Performance


	<b>Colorfastness to light (AATCC 16.3 Option 3)</b> Grade 4 min. at 40 hours
	<b>Colorfastness to crocking (AATCC 8)</b> Grade 4 min. dry & Grade 4 min. wet
	<b>Breaking Strength (ASTM D5034)</b> 480 lbf min. warp and 360 lbf min. fill
	<b>Seam Slippage (ASTM D4034)</b> 105 lbf min. warp and 78 lbf min. fill
	<b>Pilling Resistance (ASTM D3511)</b> Class 4 min.
	<b>Flammability</b> CA Technical Bulletin 117-2013 Section 1 NFPA 260-2013 Class I
	<b>* Abrasion (ASTM D4157)</b> 100,000 double rubs min. cotton duck

## Acoustical Performance

Our acoustic fabrics are all acoustically transparent. This represents the amount of sound that passes through the fabric.

**Acoustic Transparency:** 90%

For more detailed results, please consult our website.

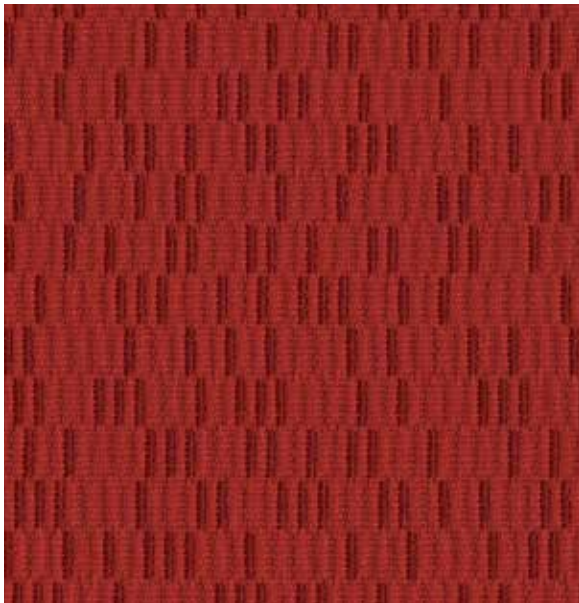
 <sup>®</sup> This pattern is included in the underwriters laboratory panel fabric recognition program. Additional testing of this U.L. recognized fabric is not required on approved panels from participating manufacturers.

\*Certification Marks owned by the Association for Contract Textiles, Inc.

Stain Repellent

Seating

# Punch Card 1242



Crimson  
1307



Alabaster  
1301



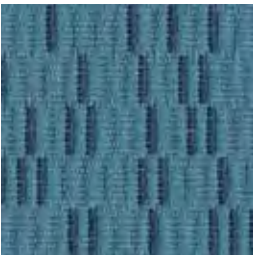
Putty  
1303



Orange  
1308



Crisp  
1305



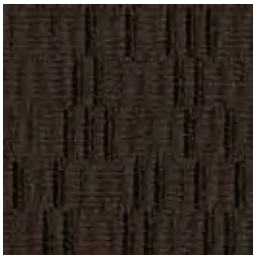
Sky  
1306



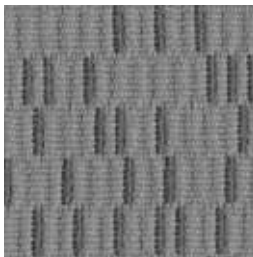
Navy  
1309



Burgundy  
1311



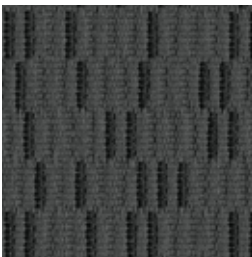
Peat  
1312



Silver Lining  
1304



Cadet  
1310



Carbon  
1302



Abyss  
1313

duvaltex

# Punch Card 1242

Seating

## Specifications

Content	78% polyester 22% post-consumer recycled polyester
Weight	11.1 ± 1.0 oz./lin. yd
Width	54" min. useable
Repeat	25" vertical   12.5" horizontal
Backing	acrylic backcoating
Treatment	stain repellent

## Cleaning Code

Standard Care Label W-S. Clean with water based cleaning agents, foam or pure, water free solvents. Vacuuming or light brushing is recommended to prevent dust and soil buildup. May also be disinfected with hydrogen peroxide, alcohol, and quaternary ammonium (quat) based cleaners.

## Miscellaneous

- Application testing of this product is recommended.
- Colors may vary between dye lots.
- This is a directional fabric.

Proudly woven in North America supporting our local communities.

## Sustainability



duvaltex

## Performance

	<b>Colorfastness to light (AATCC 16.3 Option 3)</b> Grade 4 min. at 40 hours
	<b>Colorfastness to crocking (AATCC 8)</b> Grade 4 min. dry & Grade 3 min. wet
	<b>Breaking Strength (ASTM D5034)</b> 280 lbf warp and 230 lbf fill
	<b>Seam Slippage (ASTM D4034)</b> 105 lbf warp and 60 lbf fill
	<b>Pilling Resistance (ASTM D3511)</b> Class 4
	<b>Flammability</b> CA Technical Bulletin 117-2013 Section 1
	<b>Abrasion (ASTM D4157)</b> 100,000 double rubs cotton duck

\*Certification Marks owned by the Association for Contract Textiles, Inc.

USA & INTERNATIONAL | T 800-544-0200  
CANADA | T 418 227-9897  
For samples, visit [duvaltex.com](https://duvaltex.com)



# Quadrille 4701



duvaltex

# Quadrille 4701

### Specifications

Content	53% polyester 47% pre-consumer recycled polyester
Weight	12.1 ± 1.0 oz./lin. yd
Width	54" min. useable
Repeat	none

### Cleaning Code

Standard Care Label W-S. Clean with water based cleaning agents, foam or pure, water free solvents. Vacuuming or light brushing is recommended to prevent dust and soil buildup. May also be disinfected with hydrogen peroxide, alcohol, and quaternary ammonium (quat) based cleaners.

### Miscellaneous

- Application testing of this product is recommended.
- Colors may vary between dye lots.
- This is a directional fabric.

Proudly woven in North America supporting our local communities.

### Sustainability



### Performance

	<b>Colorfastness to light (AATCC 16.3 Option 3)</b> Grade 4 min. at 40 hours
	<b>Colorfastness to crocking (AATCC 8)</b> Grade 4 min. dry & Grade 3 min. wet
	<b>Breaking Strength (ASTM D5034)</b> 245 lbf warp and 270 lbf fill
	<b>Seam Slippage (ASTM D4034)</b> 70 lbf warp and 90 lbf fill
	<b>Pilling Resistance (ASTM D3511)</b> Class 4 min.
	<b>Flammability</b> CA Technical Bulletin 117-2013 Section 1 ASTM E84 Class I or A
	<b>* Abrasion (ASTM D4157)</b> 100,000 double rubs cotton duck

### Acoustical Performance

Our acoustic fabrics are all acoustically transparent. This represents the amount of sound that passes through the fabric.

Acoustic Transparency:	90%
------------------------	-----

For more detailed results, please consult our website.

This pattern is included in the underwriters laboratory panel fabric recognition program. Additional testing of this U.L. recognized fabric is not required on approved panels from participating manufacturers.

\*Certification Marks owned by the Association for Contract Textiles, Inc.

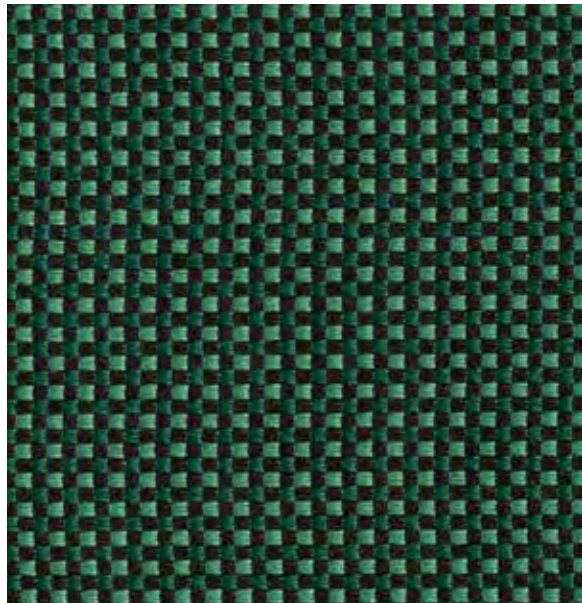
USA & INTERNATIONAL | T 800-544-0200  
CANADA | T 418 227-9897  
For samples, visit [duvaltex.com](https://www.duvaltex.com)



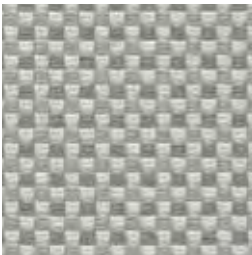
Recycled Content  
Bleach Cleanable

Seating

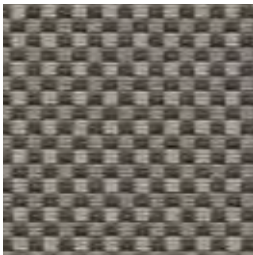
# Reason 9506



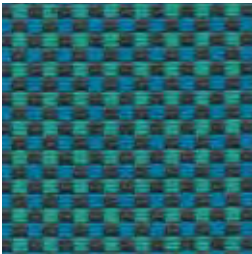
Jade  
3055



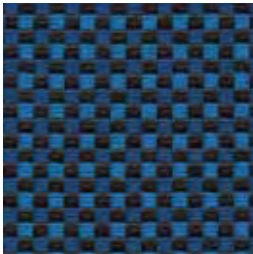
Silver  
3010



Grey  
3041



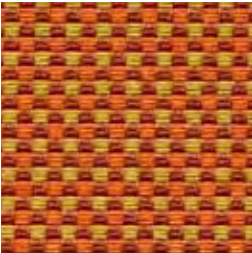
Aqua  
3042



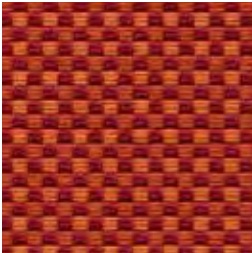
Blue  
3051



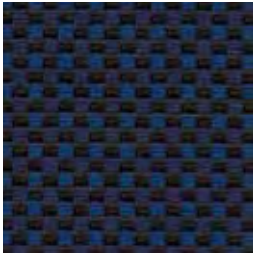
Honey  
3100



Orange  
3090



Fire  
3022



Navy  
3050



Olive  
3053



Amber  
3030



Wine  
3020



Black  
3040

duvaltex

# Reason 9506

Seating

## Specifications

Content	53% pre-consumer recycled polyester 47% post-consumer recycled polyester
Weight	13.0 ± 1.0 oz./lin. yd
Width	54" min. useable
Repeat	.1875" vertical and horizontal
Backing	acrylic backcoating

## Cleaning Code

Standard Care Label W-S. Clean with water based cleaning agents, foam or pure, water free solvents. Vacuuming or light brushing is recommended to prevent dust and soil buildup.

**Bleach Cleanable** - May be cleaned with a 10% bleach-to-water solution. Rinse well after cleaning. May also be disinfected with hydrogen peroxide, alcohol, and quaternary ammonium (quat) based cleaners.

## Miscellaneous

- Application testing of this product is recommended.
- Colors may vary between dye lots.
- This is a directional fabric.

Proudly woven in North America supporting our local communities.

## Sustainability



duvaltex

## Performance

	<b>Colorfastness to light (AATCC 16.3 Option 3)</b> Grade 4 min. at 40 hours
	<b>Colorfastness to crocking (AATCC 8)</b> Grade 4 min. dry & Grade 3 min. wet
	<b>Breaking Strength (ASTM D5034)</b> 200 lbf warp and 250 lbf fill
	<b>Seam Slippage (ASTM D4034)</b> 70 lbf warp and 50 lbf fill
	<b>Pilling Resistance (ASTM D3511)</b> Class 4 min.
	<b>Flammability</b> CA Technical Bulletin 117-2013 Section 1
	<b>Abrasion (ASTM D4157)</b> 100,000 double rubs cotton duck

\*Certification Marks owned by the Association for Contract Textiles, Inc.

USA & INTERNATIONAL | T 800-544-0200  
CANADA | T 418 227-9897  
For samples, visit [duvaltex.com](https://duvaltex.com)

Biodegradable\*  
Bleach Cleanable

Seating

Seating

CLEAN IMPACT **TEXTILES**<sup>®</sup>






# Reframe 9571/9572

# Reframe 9571/9572

## Specifications

Content	100% post-consumer recycled biodegradable* polyester
Weight	13.5 ± 1.0 oz./lin. yd
Width	54" min. useable
Repeat	7.38" horizontal   5.88" vertical
Backing	biodegradable* acrylic backcoating
Treatment	C0 stain & water repellent

## Performance

	<b>Colorfastness to light (AATCC 16.3 Option 3)</b> Grade 4 min. at 40 hours
	<b>Colorfastness to crocking (AATCC 8)</b> Grade 4 min. dry & Grade 4 min. wet
	<b>Breaking Strength (ASTM D5034)</b> 303 lbf min. warp and 325 lbf min. fill
	<b>Seam Slippage (ASTM D4034)</b> 120 lbf min. warp and 88 lbf min. fill
	<b>Pilling Resistance (ASTM D3511)</b> Class 4 min.
	<b>Flammability</b> CA Technical Bulletin 117-2013 Section 1 NFPA 260-2013 Class I
	<b>Abrasion (ASTM D4157)</b> 75,000 double rubs min. cotton duck

\*Multiple factors affect fabric durability and appearance retention, including end-user application and proper maintenance. Wyzenbeek results above 100,000 double rubs have not been shown to be an indicator of increased lifespan.  
Certification Marks owned by the Association for Contract Textiles, Inc.

## Cleaning Code

Standard Care Label W-S. Clean with water based cleaning agents, foam or pure, water free solvents. Vacuuming or light brushing is recommended to prevent dust and soil buildup.

**Bleach Cleanable** - May be cleaned with a 10% bleach-to-water solution. Rinse well after cleaning. May also be disinfected with hydrogen peroxide, alcohol, and quaternary ammonium (quat) based cleaners.

## Miscellaneous

- Application testing of this product is recommended.
- Colors may vary between dye lots.
- This is a directional fabric.

Proudly woven in North America supporting our local communities.

## Sustainability

BIODEGRADABLE\* CLEAN IMPACT TEXTILES<sup>®</sup> address the daunting problem of how to deal with polyester fabric at the end of its useful life.

Biodegradable\* in landfill after 1,278 days (tested under ASTM D5511)

\*Rate and extent of biodegradation into elements found in nature is 91% after 1,278 days under ASTM D5511 (Anaerobic Biodegradation of Plastic Materials Under High Solids Anaerobic Digestion Conditions). The test was done with the same component (PET) polyester and biocatalyst additive. No evidence of further degradation.

	Toasted 9572-4034	Matcha 9572-4030
	Turmeric 9572-4032	Serene 9572-4031
Cinnabar 9572-4033	Nebbiolo 9572-4042	Blueberry 9572-4041
Froth 9571-4010	Vapor 9572-4020	Black Sesame 9572-4040

Biodegradable\*  
Bleach Cleanable

Seating

Seating

CLEAN IMPACT **TEXTILES**<sup>®</sup>





Rise 9569/9570

Rise 9569/9570

Specifications

Content	100% post-consumer recycled biodegradable* polyester
Weight	13.6 ± 1.0 oz./lin. yd
Width	54" min. useable
Repeat	2.38" horizontal   1.63" vertical
Backing	biodegradable* acrylic backcoating
Treatment	C0 stain & water repellent

Performance

	<b>Colorfastness to light (AATCC 16.3 Option 3)</b> Grade 4.5 min. at 40 hours
	<b>Colorfastness to crocking (AATCC 8)</b> Grade 4.5 min. dry & Grade 4.5 min. wet
	<b>Breaking Strength (ASTM D5034)</b> 275 lbf min. warp and 419 lbf min. fill
	<b>Seam Slippage (ASTM D4034)</b> 38 lbf min. warp and 60 lbf min. fill
	<b>Pilling Resistance (ASTM D3511)</b> Class 4.5 min.
	<b>Flammability</b> CA Technical Bulletin 117-2013 Section 1 NFPA 260-2013 Class I
	<b>Abrasion (ASTM D4157)</b> 75,000 double rubs min. cotton duck

\*Multiple factors affect fabric durability and appearance retention, including end-user application and proper maintenance. Wyzenbeek results above 100,000 double rubs have not been shown to be an indicator of increased lifespan.  
Certification Marks owned by the Association for Contract Textiles, Inc.

Cleaning Code

Standard Care Label W-S. Clean with water based cleaning agents, foam or pure, water free solvents. Vacuuming or light brushing is recommended to prevent dust and soil buildup.

**Bleach Cleanable** - May be cleaned with a 10% bleach-to-water solution. Rinse well after cleaning. May also be disinfected with hydrogen peroxide, alcohol, and quaternary ammonium (quat) based cleaners.

Miscellaneous

- Application testing of this product is recommended.
- Colors may vary between dye lots.
- This is a directional fabric.

Proudly woven in North America supporting our local communities.

Sustainability

BIODEGRADABLE\* CLEAN IMPACT TEXTILES<sup>®</sup> address the daunting problem of how to deal with polyester fabric at the end of its useful life.

Biodegradable\* in landfill after 1,278 days (tested under ASTM D5511)

\*Rate and extent of biodegradation into elements found in nature is 91% after 1,278 days under ASTM D5511 (Anaerobic Biodegradation of Plastic Materials Under High Solids Anaerobic Digestion Conditions). The test was done with the same component (PET) polyester and biocatalyst additive. No evidence of further degradation.

	Frost 9569-4010	Rain Song 9570-4021
Daybreak 9570-4022	Fog 9570-4020	Night Sky 9570-4041
Sunset 9570-4030	Shadow 9570-4031	Echo 9570-4040



Biodegradable\*

Seating

Seating

CLEAN IMPACT **TEXTILES**<sup>®</sup>

Shift 2179

Shift 2179

Specifications

Content	100% post-consumer recycled biodegradable* polyester
Weight	12.3 ± 1.0 oz./lin. yd
Width	54" min. useable
Repeat	none
Backing	biodegradable* acrylic backcoating
Treatment	none

Cleaning Code

Standard Care Label W-S. Clean with water based cleaning agents, foam or pure, water free solvents. Vacuuming or light brushing is recommended to prevent dust and soil buildup. May also be disinfected with hydrogen peroxide, alcohol, and quaternary ammonium (quat) based cleaners..

Miscellaneous

- Application testing of this product is recommended.
- Colors may vary between dye lots.
- This is a directional fabric.

Proudly woven in North America supporting our local communities.





Sustainability


BIODEGRADABLE\* CLEAN IMPACT TEXTILES<sup>®</sup> address the daunting problem of how to deal with polyester fabric at the end of its useful life.

Biodegradable\* in landfill after 1,278 days (tested under ASTM D5511)

\*Rate and extent of biodegradation into elements found in nature is 91% after 1,278 days under ASTM D5511 (Anaerobic Biodegradation of Plastic Materials Under High Solids Anaerobic Digestion Conditions). The test was done with the same component (PET) polyester and biocatalyst additive. No evidence of further degradation.

Performance

	<b>Colorfastness to light (AATCC 16.3 Option 3)</b> Grade 4.5 min. at 40 hours
	<b>Colorfastness to crocking (AATCC 8)</b> Grade 4 min. dry & Grade 4.5 min. wet
	<b>Breaking Strength (ASTM D5034)</b> 245 lbf min. warp and 294 lbf min. fill
	<b>Seam Slippage (ASTM D4034)</b> 100 lbf min. warp and 108 lbf min. fill
	<b>Pilling Resistance (ASTM D3511)</b> Class 4 min.
	<b>Flammability</b> CA Technical Bulletin 117-2013 Section 1 NFPA 260-2013 Class I

	<b>* Abrasion (ASTM D4157)</b> 100,000 double rubs min. cotton duck
---	--

\*Multiple factors affect fabric durability and appearance retention, including end-user application and proper maintenance. Wyzenbeek results above 100,000 double rubs have not been shown to be an indicator of increased lifespan.

Certification Marks owned by the Association for Contract Textiles, Inc.

Zephyr  
942

Sauterne  
921

Pastoral  
941

Nimbus  
925

Vapor  
943

Blushing  
922

Fjord  
940

Steel  
938

Pebbles  
944

Fireclay  
923

Bluenote  
939

Umbra  
937

Sienna  
945

Ladybug  
946

Midnight  
924

Anthracite  
926

duvaltex

USA & INTERNATIONAL | T 800-544-0200  
CANADA | T 418 227-9897  
For samples, visit **duvaltex.com**

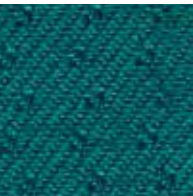
Stain Repellent

Seating

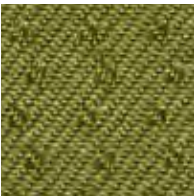
Staccato 8077



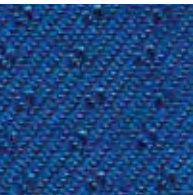
Buckskin  
7067



Teal  
7069



Verdant  
7068



Cobalt  
7070



Douglas Fir  
7034



Blue Steel  
7004



Slate  
7037



Bright Blue  
7005



Suede  
7045



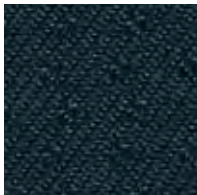
Real Red  
7040



Calcine Gray  
7047



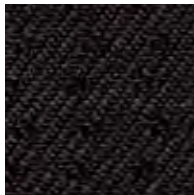
Navy  
7018



Azure  
7033



Burgundy  
7012



Black  
7020

duvaltex

Staccato 8077

Seating

Specifications

Content	100% nylon
Weight	14.9 ± 1.0 oz./lin. yd
Width	54" min. useable
Repeat	.6" vertical   .5" horizontal
Backing	acrylic backcoating
Treatment	stain repellent

Cleaning Code

Standard Care Label W-S. Clean with water based cleaning agents, foam or pure, water free solvents. Vacuuming or light brushing is recommended to prevent dust and soil buildup. May also be disinfected with hydrogen peroxide, alcohol, and quaternary ammonium (quat) based cleaners.

Miscellaneous

- Application testing of this product is recommended.
- Colors may vary between dye lots.
- This is a directional fabric.

Proudly woven in North America supporting our local communities.

Sustainability



Performance

	<b>Colorfastness to light (AATCC 16.3 Option 3)</b> Grade 4 min. at 40 hours
	<b>Colorfastness to crocking (AATCC 8)</b> Grade 4 min. dry & Grade 3 min. wet
	<b>Breaking Strength (ASTM D5034)</b> 590 lbf warp and 370 lbf fill
	<b>Seam Slippage (ASTM D4034)</b> 115 lbf warp and 105 lbf fill
	<b>Pilling Resistance (ASTM D3511)</b> Class 5
	<b>Flammability</b> CA Technical Bulletin 117-2013 Section 1
	<b>Abrasion (ASTM D4157)</b> 150,000 double rubs cotton duck

\*Certification Marks owned by the Association for Contract Textiles, Inc.

duvaltex

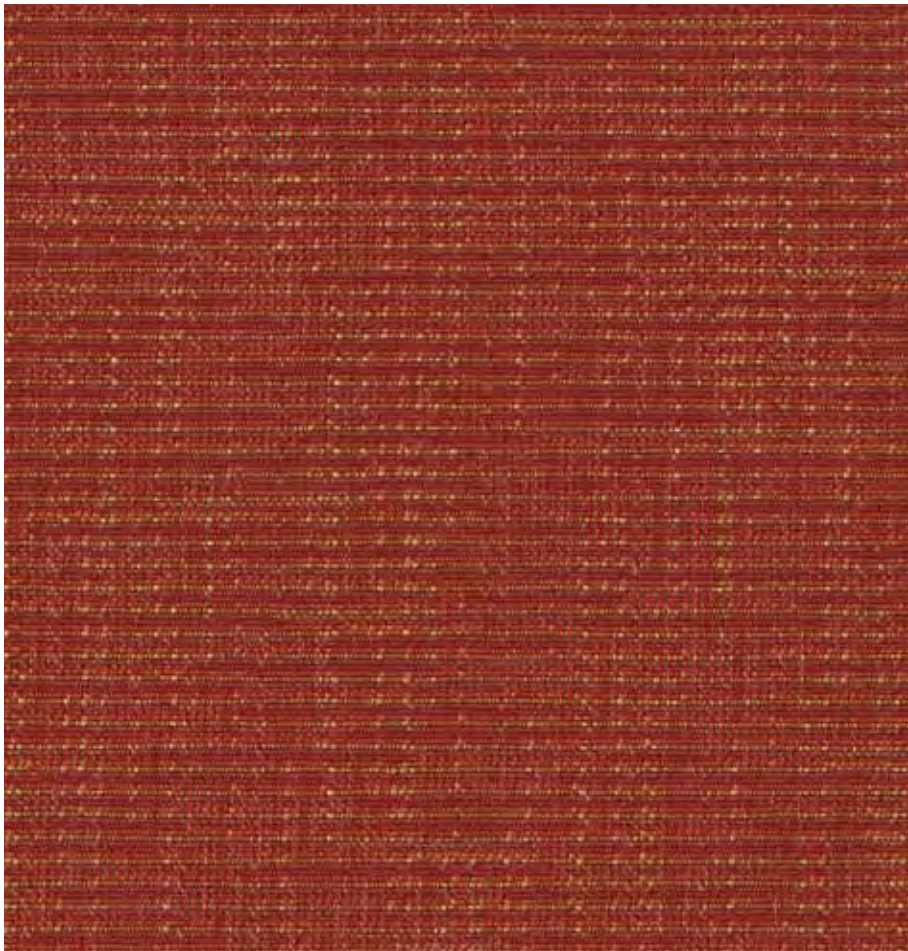
USA & INTERNATIONAL | T 800-544-0200  
CANADA | T 418 227-9897  
For samples, visit [duvaltex.com](https://duvaltex.com)



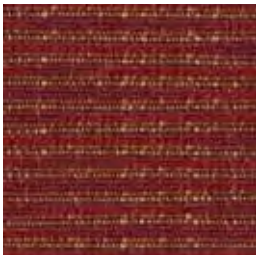
Stain Repellent

Seating

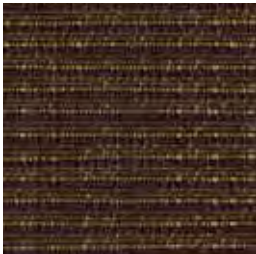
# Stitch 4737



Madras  
1092



Tartan  
1093



Moccasin  
1095



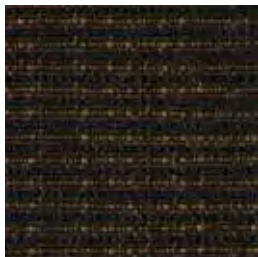
Denim  
1096



Bespoke  
1090



Topcoat  
1098



Tuxedo  
1099

duvaltex

# Stitch 4737

Seating

## Specifications

Content	58% polyester 27% pre-consumer recycled polyester 15% post-consumer recycled polyester
Weight	9.7 ± 1.0 oz./lin. yd
Width	54" min. useable
Repeat	11.1" vertical   14.3" horizontal
Backing	acrylic backcoating
Treatment	stain repellent

## Cleaning Code

Standard Care Label W-S. Clean with water based cleaning agents, foam or pure, water free solvents. Vacuuming or light brushing is recommended to prevent dust and soil buildup. May also be disinfected with hydrogen peroxide, alcohol, and quaternary ammonium (quat) based cleaners.

## Miscellaneous

- Application testing of this product is recommended.
- Colors may vary between dye lots.
- This is a directional fabric.

Proudly woven in North America supporting our local communities.

## Sustainability



## Performance

	<b>Colorfastness to light (AATCC 16.3 Option 3)</b> Grade 4 min. at 40 hours
	<b>Colorfastness to crocking (AATCC 8)</b> Grade 4 min. dry & Grade 3 min. wet
	<b>Breaking Strength (ASTM D5034)</b> 135 lbf warp and 235 lbf fill
	<b>Seam Slippage (ASTM D4034)</b> 90 lbf warp and 70 lbf fill
	<b>Pilling Resistance (ASTM D3511)</b> Class 4
	<b>Flammability</b> CA Technical Bulletin 117-2013 Section 1
	<b>Abrasion (ASTM D4157)</b> 70,000 double rubs cotton duck

\*Certification Marks owned by the Association for Contract Textiles, Inc.

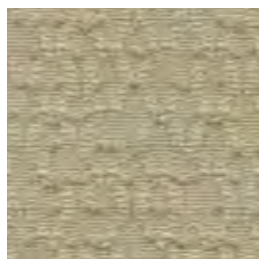
USA & INTERNATIONAL | T 800-544-0200  
CANADA | T 418 227-9897  
For samples, visit [duvaltex.com](https://duvaltex.com)



Recycled Content  
Bleach Cleanable

Seating | Panel | Acoustic

# Synopsis 2136



Bisque  
1212



Butterscotch  
1213



Chartreuse  
1214



Cerulean  
1218



Taupe  
1211



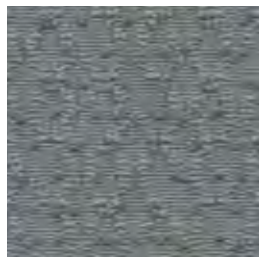
Blush  
1215



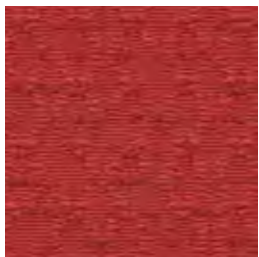
Jade  
1220



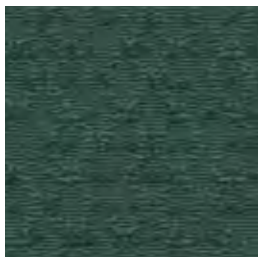
Blue Marine  
1219



Ash  
1210



Poppy  
1216



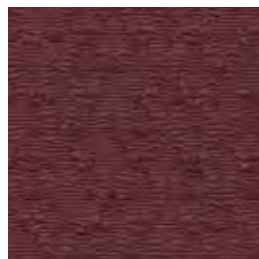
Pine  
1221



Ebony  
1223



Flannel  
1222



Burgundy  
1217

duvaltex

# Synopsis 2136

Seating | Panel | Acoustic

## Specifications

Content	52% post-consumer recycled polyester 48% pre-consumer recycled polyester
Weight	10.6 ± 1.0 oz./lin. yd
Width	54" min. useable
Repeat	7.25" vertical   4.25" horizontal

## Cleaning Code

Standard Care Label W-S. Clean with water based cleaning agents, foam or pure, water free solvents. Vacuuming or light brushing is recommended to prevent dust and soil buildup.

**Bleach Cleanable** - May be cleaned with a 10% bleach-to-water solution. Rinse well after cleaning. May also be disinfected with hydrogen peroxide, alcohol, and quaternary ammonium (quat) based cleaners.

## Miscellaneous

- Application testing of this product is recommended.
- Colors may vary between dye lots.
- This is a directional fabric.

**Proudly woven in North America supporting our local communities.**

## Sustainability

100% recycled and recyclable



duvaltex

## Performance

	<b>Colorfastness to light (AATCC 16.3 Option 3)</b> Grade 4 min. at 40 hours
	<b>Colorfastness to crocking (AATCC 8)</b> Grade 4 min. dry & Grade 3 min. wet
	<b>Breaking Strength (ASTM D5034)</b> 295 lbf warp and 180 lbf fill
	<b>Seam Slippage (ASTM D4034)</b> 115 lbf warp and 110 lbf fill
	<b>Pilling Resistance (ASTM D3511)</b> Class 4 min.
	<b>Flammability</b> CA Technical Bulletin 117-2013 Section 1 ASTM E84 Class I or A
	<b>Abrasion (ASTM D4157)</b> 100,000 double rubs cotton duck

## Acoustical Performance

Our acoustic fabrics are all acoustically transparent. This represents the amount of sound that passes through the fabric.

**Acoustic Transparency:** 90%

For more detailed results, please consult our website.

This pattern is included in the underwriters laboratory panel fabric recognition program. Additional testing of this U.L. recognized fabric is not required on approved panels from participating manufacturers.

\*Certification Marks owned by the Association for Contract Textiles, Inc.

USA & INTERNATIONAL | T 800-544-0200  
CANADA | T 418 227-9897  
For samples, visit [duvaltex.com](https://duvaltex.com)

Ocean Waste  
Biodegradable\*

Seating | Panel | Acoustic

# Tidal 2180

Day Break  
954

Sea Salt  
941

Seafoam  
942

Freshwater  
950

Sunshine  
955

Drizzle  
943

Mineral  
951

Kelp  
952

Dewpoint  
956

Drift  
944

Wave  
949

Algae  
953

Sunset  
957

Reef  
958

Wharf  
948

Dive  
945

Coral  
959

Cordelia  
960

Mariner  
947

Jetty  
946

CLEAN IMPACT TEXTILES®

CLEAN IMPACT TEXTILES®

# Tidal 2180

## Specifications

Content	42% post-consumer recycled biodegradable* polyester including ocean waste 58% post-consumer recycled biodegradable*polyester
Weight	12.5 ± 1.0 oz./lin. yd
Width	54" min. useable
Repeat	none

## Cleaning Code

Standard Care Label W-S. Clean with water based cleaning agents, foam or pure, water free solvents. Vacuuming or light brushing is recommended to prevent dust and soil buildup. May also be disinfected with hydrogen peroxide, alcohol, and quaternary ammonium (quat) based cleaners.

## Miscellaneous

- Application testing of this product is recommended.
- Colors may vary between dye lots.
- This is a directional fabric.

Proudly woven in North America supporting our local communities.

## Sustainability

OCEAN WASTE CLEAN IMPACT TEXTILES™  
For every pound of fabric produced, up to half a pound of marine waste is removed from the ocean.

## SEAQUAL INITIATIVE





By partnering with the SEAQUAL INITIATIVE, we transform ocean waste into amazing textiles.

BIODEGRADABLE\* CLEAN IMPACT TEXTILES®  
address the daunting problem of how to deal with polyester fabric at the end of its useful life.

Biodegradable\* in landfill after 1,278 days (tested under ASTM D5511)

\*Rate and extent of biodegradation into elements found in nature is 91% after 1,278 days under ASTM D5511 (Anaerobic Biodegradation of Plastic Materials Under High Solids Anaerobic Digestion Conditions). The test was done with the same component (PET) polyester and biocatalyst additive. No evidence of further degradation.

## Performance


	<b>Colorfastness to light (AATCC 16.3 Option 3)</b> Grade 4 min. at 40 hours
	<b>Colorfastness to crocking (AATCC 8)</b> Grade 4.5 min. dry & Grade 4.5 min. wet
	<b>Breaking Strength (ASTM D5034)</b> 309 lbf min. warp and 238 lbf min. fill
	<b>Seam Slippage (ASTM D4034)</b> 115 lbf min. warp and 103 lbf min. fill
	<b>Pilling Resistance (ASTM D3511)</b> Class 4 min.
	<b>Flammability</b> CA Technical Bulletin 117-2013 Section 1 NFPA 260-2013 Class I
	<b>* Abrasion (ASTM D4157)</b> 75,000 double rubs min. cotton duck

## Acoustical Performance

Our acoustic fabrics are all acoustically transparent. This represents the amount of sound that passes through the fabric.

Acoustic Transparency:	90%
------------------------	-----

For more detailed results, please consult our website.

 This pattern is included in the underwriters laboratory panel fabric recognition program. Additional testing of this U.L. recognized fabric is not required on approved panels from participating manufacturers.

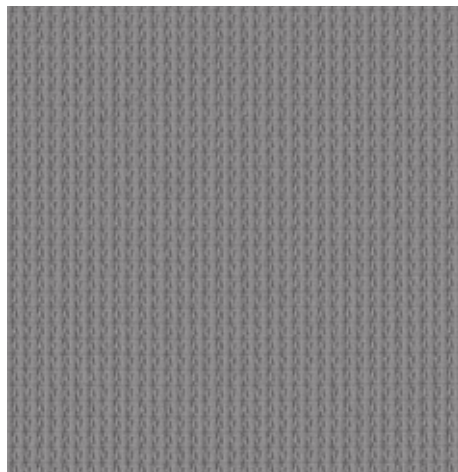
\*Certification Marks owned by the Association for Contract Textiles, Inc.

USA & INTERNATIONAL | T 800-544-0200  
CANADA | T 418 227-9897  
For samples, visit [duvaltex.com](https://www.duvaltex.com)

Stain Repellent

Seating

# To the Point 4732



Gravel  
1413



Marigold  
1407



Amaryllis  
1408



Bluegrass  
1403



Azalea  
1410



Currant  
1411



Cobalt  
1402



Almond  
1414



Moss  
1404



Cattail  
1417



Elderberry  
1409



Indigo  
1401



Kiwi  
1405



Parrot  
1406



Coffee  
1416



Cinder  
1412



Ebony  
1415

# To the Point 4732

Seating

## Specifications

Content	56% polyester 44% post-consumer recycled polyester
Weight	8.7 ± 0.5 oz./lin. yd
Width	54" min. useable
Repeat	none
Backing	SRB backcoating
Treatment	stain repellent

## Cleaning Code

Standard Care Label W-S. Clean with water based cleaning agents, foam or pure, water free solvents. Vacuuming or light brushing is recommended to prevent dust and soil buildup. May also be disinfected with hydrogen peroxide, alcohol, and quaternary ammonium (quat) based cleaners.

## Miscellaneous



- Application testing of this product is recommended.
- Colors may vary between dye lots.
- This is a directional fabric.

Proudly woven in North America supporting our local communities.

## Sustainability



## Performance

	<b>Colorfastness to light (AATCC 16.3 Option 3)</b> Grade 4 min. at 40 hours
	<b>Colorfastness to crocking (AATCC 8)</b> Grade 4 min. dry & Grade 3 min. wet
	<b>Breaking Strength (ASTM D5034)</b> 120 lbf min. warp and 150 lbf min. fill
	<b>Seam Slippage (ASTM D4034)</b> 30 lbf min. warp and 45 lbf min. fill
	<b>Pilling Resistance (ASTM D3511)</b> Class 4 min.
	<b>Flammability</b> CA Technical Bulletin 117-2013 Section 1
	<b>Abrasion (ASTM D4157)</b> 50,000 double rubs cotton duck

\*Certification Marks owned by the Association for Contract Textiles, Inc.