

# **CUBICLE TEXTILES**

## **DIGITAL BINDER**

duvaltex



Cubicle

# Napa 2954



Yountville  
9010



Rutherford  
9011



Calistoga  
9012



Sonoma  
9013



Silverado  
9014



Helena  
9015

duvaltex

Cubicle

# Napa 2954

## Actual Size



## Specifications

Content	100% FR polyester
Weight	13.0 ± 1.0 oz./lin. yd
Width	72" min. useable
Repeat	26.3" vertical   18.9" horizontal
Treatment	FR antimicrobial

## Cleaning Code

Standard Care Label W-S. Commercial wash at 160°F maximum wash temperature using detergents recommended for the type of washing machines being used, no chlorine bleach. Rinse warm. Do not overload the washer as this may result in inadequate cleansing of the fabric and excessive wrinkling. Dry on synthetic (cool) setting until slightly damp or just dry. Do not overload the dryer. Over-drying or drying at hot temperatures may cause unacceptable shrinkage to occur. If necessary, press with a cool iron ("polyester" or "synthetics" setting, max temp 275° F).

## Miscellaneous

Every effort has been made to ensure color accuracy of the digital images, however, please order a sample before specification. Application testing of this product is recommended. Colors may vary between dye lots. This is a directional fabric.

Proudly woven in North America supporting our local communities.

duvaltex

## Performance

	<b>Colorfastness to light (AATCC 16 Option 3)</b> Grade 4 min. at 60 hours
	<b>Colorfastness to crocking (AATCC 8)</b> Grade 4 min. dry & Grade 3 min. wet
	<b>Breaking Strength (ASTM D5034)</b> 175 lbf min. warp and 90 lbf min. fill
	<b>Seam Slippage (ASTM D4034)</b> 60 lbf min. warp and fill
	<b>Flammability</b> NFPA 701 TM#1 - Pass

\*Multiple factors affect fabric durability and appearance retention, including end-user application and proper maintenance. Wyzenbeek results above 100,000 double rubs have not been shown to be an indicator of increased lifespan.

Certification Marks owned by the Association for Contract Textiles, Inc.

Please order a memo sample to view full scale pattern.

USA & INTERNATIONAL | T 800-544-0200  
CANADA | T 418 227-9897

For samples, visit [guilfordofmaine.com](https://www.guilfordofmaine.com)



Cubicle

# Sand Dollar 2933



Sunshine  
9010



Ocean  
9023



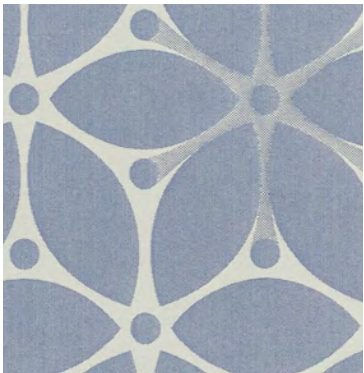
Driftwood  
9020



Spring  
9022



Sunset  
9030



Azure  
9021

duvaltex

Cubicle

# Sand Dollar 2933

## Actual Size



## Specifications

Content	100% FR polyester
Weight	13.5 ± 1.0 oz./lin. yd
Width	72" min. useable
Repeat	20.8" vertical   18.9" horizontal
Treatment	FR antimicrobial

## Cleaning Code

Standard Care Label W-S. Commercial wash at 160°F maximum wash temperature using detergents recommended for the type of washing machines being used, no chlorine bleach. Rinse warm. Do not overload the washer as this may result in inadequate cleansing of the fabric and excessive wrinkling. Dry on synthetic (cool) setting until slightly damp or just dry. Do not overload the dryer. Over-drying or drying at hot temperatures may cause unacceptable shrinkage to occur. If necessary, press with a cool iron ("polyester" or "synthetics" setting, max temp 275° F).






## Miscellaneous

Every effort has been made to ensure color accuracy of the digital images, however, please order a sample before specification. Application testing of this product is recommended. Colors may vary between dye lots. This is a directional fabric.

Proudly woven in North America supporting our local communities.

duvaltex

## Performance

	<b>Colorfastness to light (AATCC 16 Option 3)</b> Grade 4 min. at 60 hours
	<b>Colorfastness to crocking (AATCC 8)</b> Grade 4 min. dry & Grade 3 min. wet
	<b>Breaking Strength (ASTM D5034)</b> 200 lbf min. warp and 100 lbf min. fill
	<b>Seam Slippage (ASTM D4034)</b> 60 lbf min. warp and fill
	<b>Flammability</b> NFPA 701 TM#1 - Pass

\*Multiple factors affect fabric durability and appearance retention, including end-user application and proper maintenance. Wyzenbeek results above 100,000 double rubs have not been shown to be an indicator of increased lifespan.

Certification Marks owned by the Association for Contract Textiles, Inc.

Please order a memo sample to view full scale pattern.

USA & INTERNATIONAL | T 800-544-0200  
CANADA | T 418 227-9897  
For samples, visit [guilfordofmaine.com](https://www.guilfordofmaine.com)



Cubicle

# Sedona 2942



Cactus  
9021



Sky  
9010



Sand  
9012



Desert  
9020



Grass  
9013



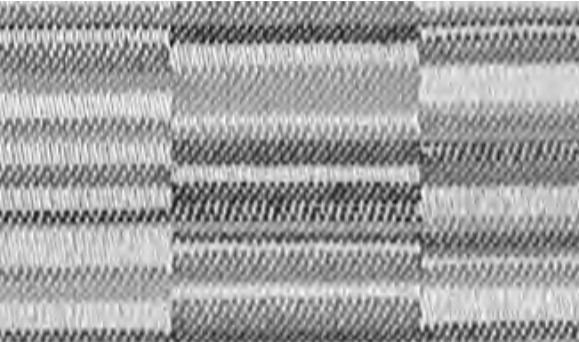
Haze  
9011

duvaltex

Cubicle

# Sedona 2942

## Actual Size



## Specifications

Content	100% FR polyester
Weight	13.7 ± 1.0 oz./lin. yd
Width	72" min. useable
Repeat	17.9" vertical   9.4" horizontal
Treatment	FR antimicrobial

## Cleaning Code

Standard Care Label W-S. Commercial wash at 160°F maximum wash temperature using detergents recommended for the type of washing machines being used, no chlorine bleach. Rinse warm. Do not overload the washer as this may result in inadequate cleansing of the fabric and excessive wrinkling. Dry on synthetic (cool) setting until slightly damp or just dry. Do not overload the dryer. Over-drying or drying at hot temperatures may cause unacceptable shrinkage to occur. If necessary, press with a cool iron ("polyester" or "synthetics" setting, max temp 275° F).






## Miscellaneous

Every effort has been made to ensure color accuracy of the digital images, however, please order a sample before specification. Application testing of this product is recommended. Colors may vary between dye lots. This is a directional fabric.

Proudly woven in North America supporting our local communities.

duvaltex

## Performance

	<b>Colorfastness to light (AATCC 16 Option 3)</b> Grade 4 min. at 60 hours
	<b>Colorfastness to crocking (AATCC 8)</b> Grade 4 min. dry & Grade 3 min. wet
	<b>Breaking Strength (ASTM D5034)</b> 200 lbf min. warp and 100 lbf min. fill
	<b>Seam Slippage (ASTM D4034)</b> 60 lbf min. warp and fill
	<b>Flammability</b> NFPA 701 TM#1 - Pass

\*Multiple factors affect fabric durability and appearance retention, including end-user application and proper maintenance. Wyzenbeek results above 100,000 double rubs have not been shown to be an indicator of increased lifespan.  
Certification Marks owned by the Association for Contract Textiles, Inc.

Please order a memo sample to view full scale pattern.

USA & INTERNATIONAL | T 800-544-0200  
CANADA | T 418 227-9897  
For samples, visit [guilfordofmaine.com](https://www.guilfordofmaine.com)



Cubicle

# Surf 2941



Outer Banks  
9010



Santa Cruz  
9020



Baja  
9021



Laguna  
9012



Oceanside  
9011



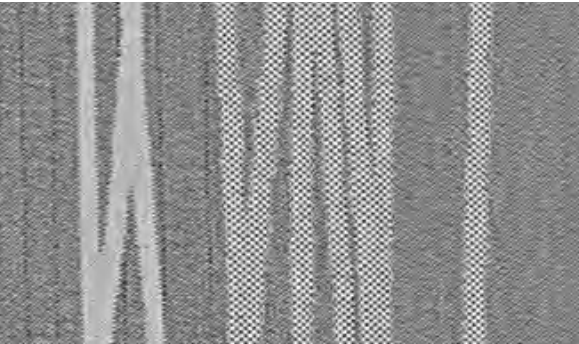
Sunset Beach  
9030

duvaltex

Cubicle

# Surf 2941

## Actual Size



## Specifications

Content	100% FR polyester
Weight	13.4 ± 1.0 oz./lin. yd
Width	72" min. useable
Repeat	35" vertical   37.7" horizontal
Treatment	FR antimicrobial

## Cleaning Code

Standard Care Label W-S. Commercial wash at 160°F maximum wash temperature using detergents recommended for the type of washing machines being used, no chlorine bleach. Rinse warm. Do not overload the washer as this may result in inadequate cleansing of the fabric and excessive wrinkling. Dry on synthetic (cool) setting until slightly damp or just dry. Do not overload the dryer. Over-drying or drying at hot temperatures may cause unacceptable shrinkage to occur. If necessary, press with a cool iron ("polyester" or "synthetics" setting, max temp 275° F).

## Miscellaneous

Every effort has been made to ensure color accuracy of the digital images, however, please order a sample before specification. Application testing of this product is recommended. Colors may vary between dye lots. This is a directional fabric.

Proudly woven in North America supporting our local communities.

duvaltex

## Performance

	<b>Colorfastness to light (AATCC 16 Option 3)</b> Grade 4 min. at 60 hours
	<b>Colorfastness to crocking (AATCC 8)</b> Grade 4 min. dry & Grade 3 min. wet
	<b>Breaking Strength (ASTM D5034)</b> 225 lbf min. warp and 100 lbf min. fill
	<b>Seam Slippage (ASTM D4034)</b> 60 lbf min. warp and fill
	<b>Flammability</b> NFPA 701 TM#1 - Pass

\*Multiple factors affect fabric durability and appearance retention, including end-user application and proper maintenance. Wyzenbeek results above 100,000 double rubs have not been shown to be an indicator of increased lifespan.

Certification Marks owned by the Association for Contract Textiles, Inc.

Please order a memo sample to view full scale pattern.

USA & INTERNATIONAL | T 800-544-0200  
CANADA | T 418 227-9897  
For samples, visit [guilfordofmaine.com](https://www.guilfordofmaine.com)



Cubicle

# Trellis 2932



Taupe  
9021



Sunshine  
9020



Ocean  
9010



Spring  
9011

duvaltex

Cubicle

# Trellis 2932

## Actual Size



## Specifications

Content	100% FR polyester
Weight	13.5 ± 1.0 oz./lin. yd
Width	72" min. useable
Repeat	20.8" vertical   18.9" horizontal
Treatment	FR antimicrobial

## Cleaning Code

Standard Care Label W-S. Commercial wash at 160°F maximum wash temperature using detergents recommended for the type of washing machines being used, no chlorine bleach. Rinse warm. Do not overload the washer as this may result in inadequate cleansing of the fabric and excessive wrinkling. Dry on synthetic (cool) setting until slightly damp or just dry. Do not overload the dryer. Over-drying or drying at hot temperatures may cause unacceptable shrinkage to occur. If necessary, press with a cool iron ("polyester" or "synthetics" setting, max temp 275° F).

## Miscellaneous

Every effort has been made to ensure color accuracy of the digital images, however, please order a sample before specification. Application testing of this product is recommended. Colors may vary between dye lots. This is a directional fabric.

Proudly woven in North America supporting our local communities.

duvaltex

USA & INTERNATIONAL | T 800-544-0200  
CANADA | T 418 227-9897  
For samples, visit [guilfordofmaine.com](http://guilfordofmaine.com)

## Performance

	<b>Colorfastness to light (AATCC 16 Option 3)</b> Grade 4 min. at 60 hours
	<b>Colorfastness to crocking (AATCC 8)</b> Grade 4 min. dry & Grade 3 min. wet
	<b>Breaking Strength (ASTM D5034)</b> 200 lbf min. warp and 90 lbf min. fill
	<b>Seam Slippage (ASTM D4034)</b> 60 lbf min. warp and fill
	<b>Flammability</b> NFPA 701 TM#1 - Pass

\*Multiple factors affect fabric durability and appearance retention, including end-user application and proper maintenance. Wyzenbeek results above 100,000 double rubs have not been shown to be an indicator of increased lifespan.

Certification Marks owned by the Association for Contract Textiles, Inc.