

SEATING TEXTILES

DIGITAL BINDER



duvaltex

Biodegradable*

Seating

Cocoon 2198

Nimbus
227

Overcast
222

Stormcloud
223

Snowfall
221

Tawny
228

Serene
237

Nocturne
224

Lamb
226

Flaxen
231

Mist
236

Embergray
229

Odyssey
238

Raven
225

Madder
232

Maple
233

Loden
239

Cherry Fig
234

Heather
235

Blue Chroma
240

Carob
230

Cocoon 2198

CLEAN IMPACT **TEXTILES**[®]

Specifications

Content	100% post-consumer recycled biodegradable* polyester
Weight	19 ± 1.0 oz./lin. yd
Width	54" min. useable
Repeat	none

Cleaning Code

Standard Care Label W-S. Clean with water based cleaning agents, foam or pure, water free solvents. Vacuuming or light brushing is recommended to prevent dust and soil buildup. May also be disinfected with hydrogen peroxide, alcohol, and quaternary ammonium (quat) based cleaners.

Miscellaneous

- Application testing of this product is recommended.
- Colors may vary between dye lots.
- This is a directional fabric.

Proudly woven in North America supporting our local communities.






Sustainability

BIODEGRADABLE* CLEAN IMPACT TEXTILES[®] address the daunting problem of how to deal with polyester fabric at the end of its useful life.

Biodegradable* in landfill after 1,278 days (tested under ASTM D5511)

* Rate and extent of biodegradation into elements found in nature is 91% after 1,278 days under ASTM D5511 (Anaerobic Biodegradation of Plastic Materials Under High Solids Anaerobic Digestion Conditions). The test was done with the same component (PET) polyester and biocatalyst additive. No evidence of further degradation.

Performance

	Colorfastness to light (AATCC 16.3 Option 3) Grade 4 min. at 40 hours
	Colorfastness to crocking (AATCC 8) Grade 4 min. dry & Grade 4 min. wet
	Breaking Strength (ASTM D5034) 195 lbf min. warp and 224 lbf fill
	Seam Slippage (ASTM D4034) 139 lbf min. warp and 132 lbf min. fill
	Pilling Resistance (ASTM D3511) Class 3.5 min.
	Flammability CA Technical Bulletin 117-2013 Section 1 NFPA 260-2013 Class I
	A* Abrasion (ASTM D4157) 100,000 double rubs min. cotton duck

Certification Marks owned by the Association for Contract Textiles, Inc.

duvaltex

USA & INTERNATIONAL | T 800-544-0200
CANADA | T 418 227-9897
For samples, visit duvaltex.com

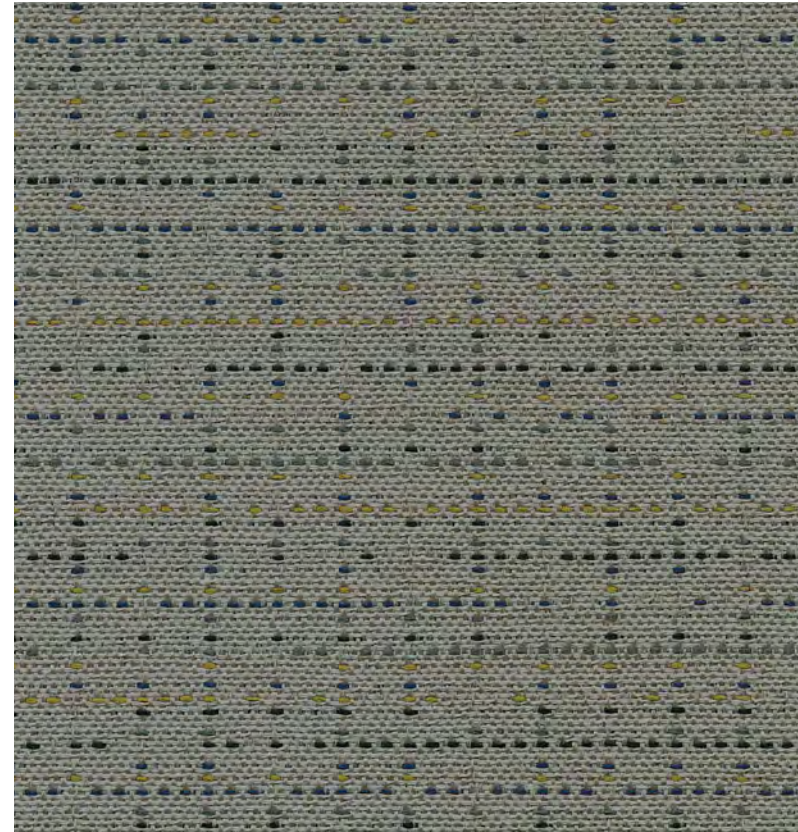


FC-2198 25/05

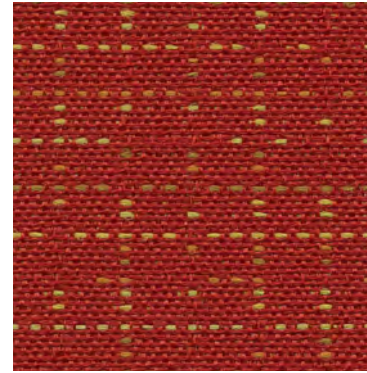
C0 Stain Repellent

Seating | Panel

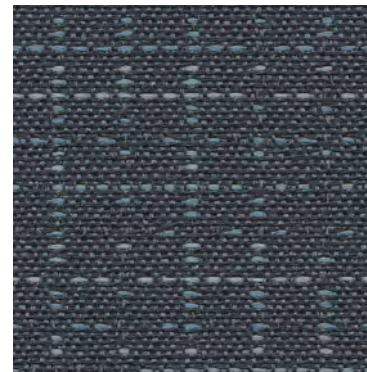
Couture 4858



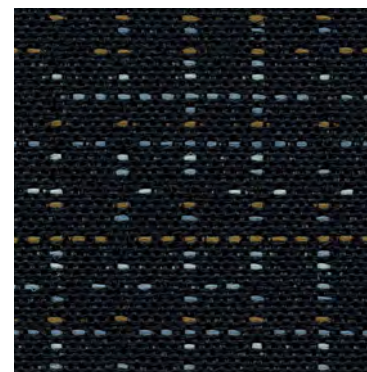
Thimble
1756



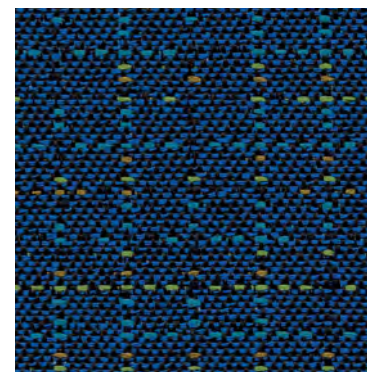
Basting
1751



Shears
1750



Seam
1752



Tailor
1757

Couture 4858

Seating | Panel

Specifications

Content	57% post-consumer recycled polyester 25% pre-consumer recycled polyester 18% polyester
Weight	9.2 ± 1.0 oz./lin. yd
Width	54" min. useable
Repeat	14.5" vertical 14" horizontal
Backing	acrylic backcoating
Treatment	C0 stain repellent
Tackable	yes

Cleaning Code

Standard Care Label W-S. Clean with water based cleaning agents, foam or pure, water free solvents. Vacuuming or light brushing is recommended to prevent dust and soil buildup. May also be disinfected with hydrogen peroxide, alcohol, and quaternary ammonium (quat) based cleaners.

Miscellaneous

- Application testing of this product is recommended.
- Colors may vary between dye lots.
- This is a directional fabric.
- Tackable properties may vary depending on fabric structure and recovery characteristics.

Proudly woven in North America supporting our local communities.

Sustainability



Performance

- Colorfastness to light (AATCC 16.3 Option 3)**
Grade 4 min. at 40 hours
- Colorfastness to crocking (AATCC 8)**
Grade 4 min. dry & Grade 3 min. wet
- Breaking Strength (ASTM D5034)**
115 lbf warp and 85 lbf fill
- Seam Slippage (ASTM D4034)**
55 lbf warp and 60 lbf fill
- Pilling Resistance (ASTM D3511)**
Class 5
- Flammability**
CA Technical Bulletin 117-2013 Section 1
ASTM E84 Class I or A
- Abrasion (ASTM D4157)**
100,000 double rubs cotton duck

This pattern is included in the underwriters laboratory panel fabric recognition program. Additional testing of this U.L. recognized fabric is not required on approved panels from participating manufacturers.

*Certification Marks owned by the Association for Contract Textiles, Inc.

duvaltex

duvaltex

USA & INTERNATIONAL | T 800-544-0200
CANADA | T 418 227-9897
For samples, visit [duvaltex.com](https://www.duvaltex.com)



FC-4858 25/12

Biodegradable*
Recycled Content
Bleach Cleanable

Seating

Emerge 2178

Citrine
902

Cloud
911

Atmosphere
910

Featherstone
913

Clay
904

Parchment
901

Aloe
908

Cobalt
909

Graphite
914

Smoke
912

Terra Rose
903

Cerise
905

Emerald
907

Squid Ink
906

Evening
915

Emerge 2178

CLEAN IMPACT **TEXTILES**[®]

Specifications

Content	81% post-consumer recycled biodegradable* polyester 19% pre-consumer recycled biodegradable* polyester
Weight	12.4 ± 1.0 oz./lin. yd
Width	54" min. useable
Repeat	12" horizontal 18.25" vertical
Backing	none
Treatment	none

Cleaning Code

Standard Care Label W-S. Clean with water based cleaning agents, foam or pure, water free solvents. Vacuuming or light brushing is recommended to prevent dust and soil buildup.

Bleach Cleanable - May be cleaned with a 10% bleach-to-water solution. Rinse well after cleaning. May also be disinfected with hydrogen peroxide, alcohol, and quaternary ammonium (quat) based cleaners.

Miscellaneous

- Application testing of this product is recommended.
- Colors may vary between dye lots.
- This is a directional fabric.

Proudly woven in North America supporting our local communities.




Sustainability

BIODEGRADABLE* CLEAN IMPACT TEXTILES[®] address the daunting problem of how to deal with polyester fabric at the end of its useful life.

Biodegradable* in landfill after 1,278 days (tested under ASTM D5511)

*Rate and extent of biodegradation into elements found in nature is 91% after 1,278 days under ASTM D5511 (Anaerobic Biodegradation of Plastic Materials Under High Solids Anaerobic Digestion Conditions). The test was done with the same component (PET) polyester and biocatalyst additive. No evidence of further degradation.

Performance

	Colorfastness to light (AATCC 16.3 Option 3) Grade 4.5 min. at 40 hours
	Colorfastness to crocking (AATCC 8) Grade 4 min. dry & Grade 4 min. wet
	Breaking Strength (ASTM D5034) 265 lbf min. warp and 286 lbf min. fill
	Seam Slippage (ASTM D4034) 108 lbf min. warp and 106 lbf min. fill
	Pilling Resistance (ASTM D3511) Class 4 min.
	Flammability CA Technical Bulletin 117-2013 Section 1 NFPA 260-2013 Class I
	A* Abrasion (ASTM D4157) 100,000 double rubs min. cotton duck

*Multiple factors affect fabric durability and appearance retention, including end-user application and proper maintenance. Wyzenbeek results above 100,000 double rubs have not been shown to be an indicator of increased lifespan.

Certification Marks owned by the Association for Contract Textiles, Inc.

duvaltex

USA & INTERNATIONAL | T 800-544-0200
CANADA | T 418 227-9897
For samples, visit duvaltex.com



FC-2178 24/02

C0 Stain Repellent

Seating

Frolic 5000

Frolic 5000

Seating

Specifications

Content	100% polyester
Weight	16.7 ± 1.0 oz./lin. yd
Width	54" min. useable
Repeat	none
Backing	acrylic backcoating
Treatment	C0 stain repellent

Cleaning Code






Standard Care Label W-S. Clean with water based cleaning agents, foam or pure, water free solvents. Vacuuming or light brushing is recommended to prevent dust and soil buildup. May also be disinfected with hydrogen peroxide, alcohol, and quaternary ammonium (quat) based cleaners.

Miscellaneous

- Application testing of this product is recommended.
- Colors may vary between dye lots.
- This is a directional fabric.

Proudly woven in North America supporting our local communities.

Performance

 Colorfastness to light (AATCC 16.3 Option 3) Grade 4 min. at 40 hours
 Colorfastness to crocking (AATCC 8) Grade 4 min. dry & Grade 3 min. wet
Breaking Strength (ASTM D5034) 250 lbf min. warp and fill
 Seam Slippage (ASTM D4034) 50 lbf min. warp and fill
Pilling Resistance (ASTM D3511) Class 4 min.
 Flammability CA Technical Bulletin 117-2013 Section 1
 Abrasion (ASTM D4157) 100,000 double rubs min. cotton duck

*Certification Marks owned by the Association for Contract Textiles, Inc.

Slate
0011

Red
0002

Cactus
0017

Blue
0004

Aubergine
0072

Pine
0007

Navy
0014

Ink
0006

duvaltex

duvaltex

USA & INTERNATIONAL | T 800-544-0200
 CANADA | T 418 227-9897
 For samples, visit duvaltex.com



Ocean Waste
Biodegradable*

Seating | Panel | Acoustic

Gather 2195

CLEAN IMPACT **TEXTILES**

Halo
422

Haze
430

Breeze
426

Pearl
411

Peacan
412

Cornflower
429

Storm
425

Mineral Rock
415

Rustic
420

Dusk
428

Twilight
427

Anchor
416

Sedona
421

Plum Grey
413

Bottle Green
424

Anthracite
417

Cherry Lacquer
419

Truffle
414

Laurel
423

Onyx
418

CLEAN IMPACT **TEXTILES**

Gather 2195

Specifications

Content	82% post-consumer recycled biodegradable* polyester including ocean waste 18% biodegradable* polyester
Weight	16.4 ± 1.0 oz./lin. yd
Width	54" min. useable
Repeat	none

Cleaning Code

Standard Care Label W-S. Clean with water based cleaning agents, foam or pure, water free solvents. Vacuuming or light brushing is recommended to prevent dust and soil buildup. May also be disinfected with hydrogen peroxide, alcohol, and quaternary ammonium (quat) based cleaners.

Miscellaneous

- Application testing of this product is recommended.
- Colors may vary between dye lots.
- This is a directional fabric.

Proudly woven in North America supporting our local communities.

Sustainability

OCEAN WASTE CLEAN IMPACT TEXTILES®

For every pound of fabric produced, up to half a pound of marine waste is removed from the ocean.

SEAQUAL INITIATIVE

By partnering with the SEAQUAL INITIATIVE, we transform ocean waste into amazing textiles.

BIODEGRADABLE* CLEAN IMPACT TEXTILES®

address the daunting problem of how to deal with polyester fabric at the end of its useful life.

Biodegradable* in landfill after 1,278 days (tested under ASTM D5511)

*Rate and extent of biodegradation into elements found in nature is 91% after 1,278 days under ASTM D5511 (Anaerobic Biodegradation of Plastic Materials Under High Solids Anaerobic Digestion Conditions). The test was done with the same component (PET) polyester and biocatalyst additive. No evidence of further degradation.

Duvaltex is an official and authorized advertiser of SEAQUAL* YARN, the SEAQUAL INITIATIVE and their related trademarks, under licence agreement. Only SEAQUAL licensees are permitted to publicly advertise details about SEAQUAL trademarks.


duvaltex


USA & INTERNATIONAL | T 800-544-0200

CANADA | T 418 227-9897

For samples, visit duvaltex.com

Performance


 **Colorfastness to light (AATCC 16.3 Option 3)**
Grade 4 min. at 40 hours

 **Colorfastness to crocking (AATCC 8)**
Grade 4 min. dry & Grade 4 min. wet

Breaking Strength (ASTM D5034)
373 lbf min. warp and 328 lbf min. fill

 **Seam Slippage (ASTM D4034)**
115 lbf min. warp and 103 lbf min. fill

Pilling Resistance (ASTM D3511)
Class 4 min.

 **Flammability**
CA Technical Bulletin 117-2013 Section 1
NFPA 260-2013 Class I
ASTM E84 Class I or A


 **Abrasion (ASTM D4157)**
100,000 double rubs min. cotton duck

Acoustical Performance

Our acoustic fabrics are all acoustically transparent. This represents the amount of sound that passes through the fabric.

Acoustic Transparency: 90%

For more detailed results, please consult our website.

 This pattern is included in the underwriters laboratory panel fabric recognition program. Additional testing of this U.L. recognized fabric is not required on approved panels from participating manufacturers.

*Certification Marks owned by the Association for Contract Textiles, Inc.



FC-2195 24/09

Recycled Content
Bleach Cleanable

Seating

Input 5598

Input 5598

Seating

		Tiffany 1480	Lime 1477	Squash 1488
	Cloud 1471	Sky 1481	Mint 1479	Flame 1487
Bisque 1476	Dove 1472	Delft 1482	Pine 1478	Crimson 1486
Fossil 1475	Coal 1473	Midnight 1483	Orchid 1484	Raisin 1485
Jet 1474				

Specifications

Content	94% post-consumer recycled polyester 6% pre-consumer recycled polyester
Weight	10.1 ± 1.0 oz./lin. yd
Width	54" min. useable
Repeat	2.5" vertical 12.25" horizontal

Cleaning Code

Standard Care Label W-S. Clean with water based cleaning agents, foam or pure, water free solvents. Vacuuming or light brushing is recommended to prevent dust and soil buildup.

Bleach Cleanable - May be cleaned with a 10% bleach-to-water solution. Rinse well after cleaning. May also be disinfected with hydrogen peroxide, alcohol, and quaternary ammonium (quat) based cleaners.

Miscellaneous

- Application testing of this product is recommended.
- Colors may vary between dye lots.
- This is a directional fabric.

Proudly woven in North America supporting our local communities.

Sustainability

100% recycled and recyclable



Performance

	Colorfastness to light (AATCC 16.3 Option 3) Grade 4 min. at 40 hours
	Colorfastness to crocking (AATCC 8) Grade 4 min. dry & Grade 3 min. wet
	Breaking Strength (ASTM D5034) 290 lbf warp and 250 lbf fill
	Seam Slippage (ASTM D4034) 110 lbf warp and 75 lbf fill
	Pilling Resistance (ASTM D3511) Class 4 min.
	Flammability CA Technical Bulletin 117-2013 Section 1
	Abrasion (ASTM D4157) 100,000 double rubs cotton duck

*Certification Marks owned by the Association for Contract Textiles, Inc.

duvaltex

USA & INTERNATIONAL | T 800-544-0200
CANADA | T 418 227-9897
For samples, visit [ex.com">duvaltex.com](https://www.duvalt<span style=)

C0 Stain Repellent

Seating | Panel | Acoustic

Intuition 4856

Intuition 4856

Seating | Panel | Acoustic

Specifications

Content	55% post-consumer recycled polyester 34% pre-consumer recycled polyester 11% polyester
Weight	11.9 ± 1.0 oz./lin. yd
Width	54" min. useable
Repeat	none
Backing	acrylic backcoating
Treatment	C0 stain repellent
Tackable	yes

Cleaning Code

Standard Care Label W-S. Clean with water based cleaning agents, foam or pure, water free solvents. Vacuuming or light brushing is recommended to prevent dust and soil buildup. May also be disinfected with hydrogen peroxide, alcohol, and quaternary ammonium (quat) based cleaners.

Miscellaneous

- Application testing of this product is recommended.
- Colors may vary between dye lots.
- This is a directional fabric.
- Tackable properties may vary depending on fabric structure and recovery characteristics.

Proudly woven in North America supporting our local communities.

Sustainability



Performance

- Colorfastness to light (AATCC 16.3 Option 3)**
Grade 4 min. at 40 hours
- Colorfastness to crocking (AATCC 8)**
Grade 4 min. dry & Grade 3 min. wet
- Breaking Strength (ASTM D5034)**
210 lbf warp and 200 lbf fill
- Seam Slippage (ASTM D4034)**
30 lbf warp and 45 lbf fill
- Pilling Resistance (ASTM D3511)**
Class 4 min.
- Flammability**
CA Technical Bulletin 117-2013 Section 1
ASTM E84 Class I or A
- Abrasion (ASTM D4157)**
100,000 double rubs cotton duck

Acoustical Performance

Our acoustic fabrics are all acoustically transparent. This represents the amount of sound that passes through the fabric.

Acoustic Transparency: 95%

For more detailed results, please consult our website.

This pattern is included in the underwriters laboratory panel fabric recognition program. Additional testing of this U.L. recognized fabric is not required on approved panels from participating manufacturers.

*Certification Marks owned by the Association for Contract Textiles, Inc.

		Sand 1713		Bisque 1711
Coral 1714	Honey 1716	Viridian 1723		Platinum 1717
Ochre 1718	Sage 1721	Peacock 1722		Slate 1719
Scarlet 1720	Hickory 1715	Admiral 1724		Charcoal 1712

duvaltex

USA & INTERNATIONAL | T 800-544-0200
CANADA | T 418 227-9897
For samples, visit [duvaltex.com](https://www.duvaltex.com)

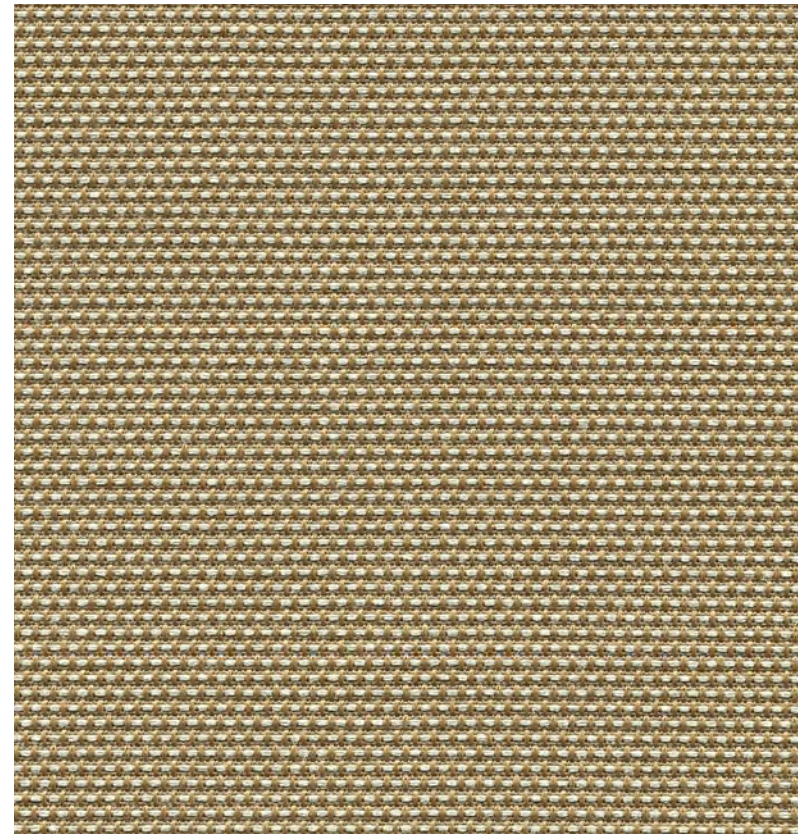


FC-4856 25/10

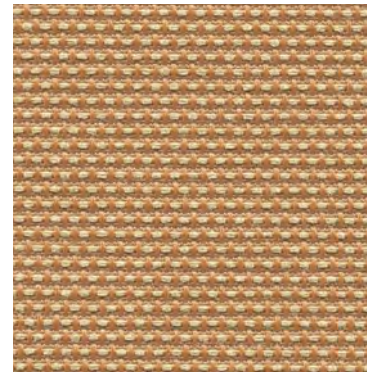
Recycled Content
Bleach Cleanable
C0 Stain Repellent

Seating | Panel | Acoustic

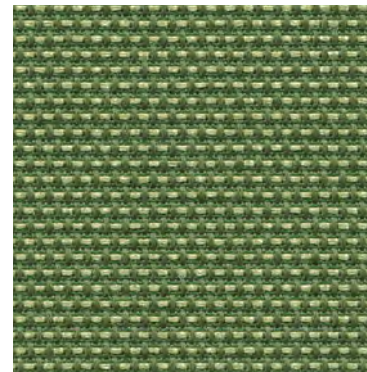
Jane 9085



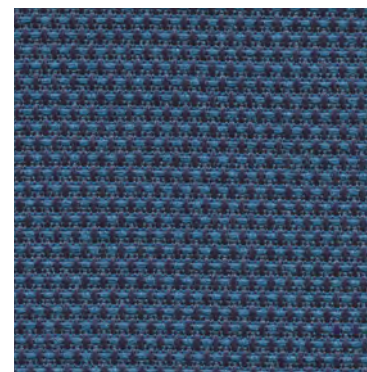
Natural
4061



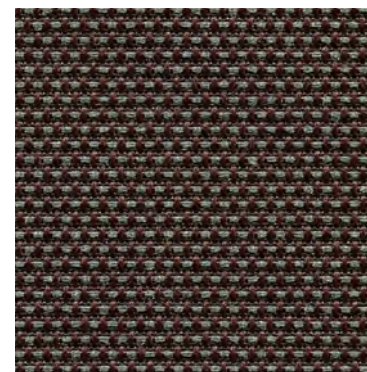
Gold
4020



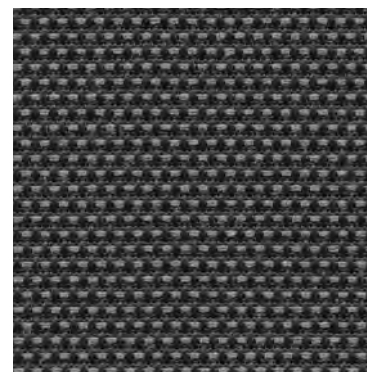
Chive
4070



Blueberry
4091



Steel
4100



Jet
4040

duvaltex

Jane 9085

Seating | Panel | Acoustic

Specifications

Content	100% pre-consumer recycled polyester
Weight	9.7 ± 0.5 oz./lin. yd
Width	54" min. useable
Repeat	none
Treatment	C0 stain repellent
Tackable	yes

Cleaning Code

Standard Care Label W-S. Clean with water based cleaning agents, foam or pure, water free solvents. Vacuuming or light brushing is recommended to prevent dust and soil buildup.

Bleach Cleanable - May be cleaned with a 10% bleach-to-water solution. Rinse well after cleaning. May also be disinfected with hydrogen peroxide, alcohol, and quaternary ammonium (quat) based cleaners.

Miscellaneous

- Application testing of this product is recommended.
- Colors may vary between dye lots.
- This is a directional fabric.
- Tackable properties may vary depending on fabric structure and recovery characteristics.

Proudly woven in North America supporting our local communities.

Sustainability

100% recycled and recyclable



duvaltex

Performance

Colorfastness to light (AATCC 16.3 Option 3)
Grade 4 min. at 40 hours

Colorfastness to crocking (AATCC 8)
Grade 4 min. dry & Grade 3 min. wet

Breaking Strength (ASTM D5034)
200 lbf min. warp and 130 lbf min. fill

Seam Slippage (ASTM D4034)
50 lbf min. warp and fill

Pilling Resistance (ASTM D3511)
Class 4 min.

Flammability
CA Technical Bulletin 117-2013 Section 1
ASTM E84 Class I or A

Abrasion (ASTM D4157)
50,000 double rubs min. cotton duck

Acoustical Performance

Our acoustic fabrics are all acoustically transparent. This represents the amount of sound that passes through the fabric.

Acoustic Transparency: 90%

For more detailed results, please consult our website.

This pattern is included in the underwriters laboratory panel fabric recognition program. Additional testing of this U.L. recognized fabric is not required on approved panels from participating manufacturers.

*Certification Marks owned by the Association for Contract Textiles, Inc.

USA & INTERNATIONAL | T 800-544-0200
CANADA | T 418 227-9897
For samples, visit duvaltex.com



FC-9085 25/12

Biodegradable*
Bleach Cleanable

Seating | Panel | Acoustic

Marlstone 2194

Marlstone 2194

CLEAN IMPACT **TEXTILES**[®]

Specifications

Content	100% post-consumer recycled biodegradable* polyester
Weight	13.4 ± 1.0 oz./lin. yd
Width	54" min. useable
Repeat	none
Tackable	yes

Cleaning Code

Standard Care Label W-S. Clean with water based cleaning agents, foam or pure, water free solvents. Vacuuming or light brushing is recommended to prevent dust and soil buildup.

Bleach Cleanable - May be cleaned with a 10% bleach-to-water solution. Rinse well after cleaning. May also be disinfected with hydrogen peroxide, alcohol, and quaternary ammonium (quat) based cleaners.

Miscellaneous

- Application testing of this product is recommended.
- Colors may vary between dye lots.
- This is a directional fabric.
- Tackable properties may vary depending on fabric structure and recovery characteristics.

Proudly woven in North America supporting our local communities.






Sustainability

BIODEGRADABLE* CLEAN IMPACT TEXTILES[®] address the daunting problem of how to deal with polyester fabric at the end of its useful life.

Biodegradable* in landfill after 1,278 days (tested under ASTM D5511)

*Rate and extent of biodegradation into elements found in nature is 91% after 1,278 days under ASTM D5511 (Anaerobic Biodegradation of Plastic Materials Under High Solids Anaerobic Digestion Conditions). The test was done with the same component (PET) polyester and biocatalyst additive. No evidence of further degradation.

Performance


	Colorfastness to light (AATCC 16.3 Option 3) Grade 4 min. at 40 hours
	Colorfastness to crocking (AATCC 8) Grade 4 min. dry & Grade 4 min. wet
	Breaking Strength (ASTM D5034) 319 lbf min. warp and 363 lbf min. fill
	Seam Slippage (ASTM D4034) 121 lbf min. warp and 102 lbf min. fill
	Pilling Resistance (ASTM D3511) Class 4 min.
	Flammability CA Technical Bulletin 117-2013 Section 1 NFPA 260-2013 Class I ASTM E84 Class I or A
	Abrasion (ASTM D4157) 100,000 double rubs min. cotton duck

Acoustical Performance

Our acoustic fabrics are all acoustically transparent. This represents the amount of sound that passes through the fabric.

Acoustic Transparency: 90%

For more detailed results, please consult our website.

 This pattern is included in the underwriters laboratory panel fabric recognition program. Additional testing of this U.L. recognized fabric is not required on approved panels from participating manufacturers.

*Certification Marks owned by the Association for Contract Textiles, Inc.

		Calcite 901		Glow 903
	Silica 902	Seasalt 921		Reed Flower 904
Mineral Blue 907	Cinder 923	Flint 922		Nut 905
Arboreal 930	Slate Blue 927	Granite 924		Rose Stone 906
Lava Rock 925	Fjord 928	Peat 926		Amethyst 929

CLEAN IMPACT **TEXTILES**[®]

duvaltex

USA & INTERNATIONAL | T 800-544-0200
CANADA | T 418 227-9897
For samples, visit duvaltex.com



FC-2194 25/12

Recycled Content

Seating

Moguls 2386

Moguls 2386

Seating

Specifications

Content	65% pre-consumer recycled polyester 35% post-consumer recycled polyester
Weight	13.4 ± 0.5 oz./lin. yd
Width	54" min. useable
Repeat	.8" vertical .26" horizontal

Cleaning Code

Standard Care Label W-S. Clean with water based cleaning agents, foam or pure, water free solvents. Vacuuming or light brushing is recommended to prevent dust and soil buildup. May also be disinfected with hydrogen peroxide, alcohol, and quaternary ammonium (quat) based cleaners.

Miscellaneous

- Application testing of this product is recommended.
- Colors may vary between dye lots.
- This is a directional fabric.

Proudly woven in North America supporting our local communities.

Sustainability

100% recycled and recyclable

Performance

-  **Colorfastness to light (AATCC 16.3 Option 3)**
Grade 4 min. at 40 hours
-  **Colorfastness to crocking (AATCC 8)**
Grade 4 min. dry & Grade 3 min. wet
- Breaking Strength (ASTM D5034)**
250 lbf warp and 180 lbf min. fill
-  **Seam Slippage (ASTM D4034)**
60 lbf min. warp and fill
- Pilling Resistance (ASTM D3511)**
Class 4
-  **Flammability**
CA Technical Bulletin 117-2013 Section 1
-  **Abrasion (ASTM D4157)**
100,000 double rubs min. cotton duck

*Multiple factors affect fabric durability and appearance retention, including end-user application and proper maintenance. Wyzenbeek results above 100,000 double rubs have not been shown to be an indicator of increased lifespan.
Certification Marks owned by the Association for Contract Textiles, Inc.

Birch
2243

Sand
2196

Honeycomb
2190

Mandarin
2245

Verdant
2244

Thistle
2194

Waterfall
2691

Rhododendron
2191

Flare
2188

Grape Jelly
2195

Graphite
2197

Navy
2231

Onyx
2199

duvalttex

USA & INTERNATIONAL | T 800-544-0200
CANADA | T 418 227-9897
For samples, visit [tex.com">duvalttex.com](https://www.duvalt<span style=)



Biodegradable*

Seating

Nest 2199

CLEAN IMPACT **TEXTILES**[®]

Specifications

Content	100% post-consumer recycled biodegradable* polyester
Weight	20.3 ± 1.0 oz./lin. yd
Width	54" min. useable
Repeat	none

Cleaning Code

Standard Care Label W-S. Clean with water based cleaning agents, foam or pure, water free solvents. Vacuuming or light brushing is recommended to prevent dust and soil buildup. May also be disinfected with hydrogen peroxide, alcohol, and quaternary ammonium (quat) based cleaners.

Miscellaneous

- Application testing of this product is recommended.
- Colors may vary between dye lots.
- This is a directional fabric.

Proudly woven in North America supporting our local communities.






Sustainability

BIODEGRADABLE* CLEAN IMPACT TEXTILES[®] address the daunting problem of how to deal with polyester fabric at the end of its useful life.

Biodegradable* in landfill after 1,278 days (tested under ASTM D5511)

*Rate and extent of biodegradation into elements found in nature is 91% after 1,278 days under ASTM D5511 (Anaerobic Biodegradation of Plastic Materials Under High Solids Anaerobic Digestion Conditions). The test was done with the same component (PET) polyester and biocatalyst additive. No evidence of further degradation.

Performance

-  **Colorfastness to light (AATCC 16.3 Option 3)**
Grade 4 min. at 40 hours
-  **Colorfastness to crocking (AATCC 8)**
Grade 4 min. dry & Grade 4 min. wet
- Breaking Strength (ASTM D5034)**
250 lbf min. warp and 202 lbf fill
-  **Seam Slippage (ASTM D4034)**
130 lbf min. warp and 130 lbf min. fill
- Pilling Resistance (ASTM D3511)**
Class 4 min.
-  **Flammability**
CA Technical Bulletin 117-2013 Section 1
NFPA 260-2013 Class I
-  **A* Abrasion (ASTM D4157)**
100,000 double rubs min. cotton duck

Certification Marks owned by the Association for Contract Textiles, Inc.

Morningtide
249

Mineral
242

Truffle
243

Lakeview
250

Truffle
243

Luna
241

Fawn
245

Twilight
248

Umbra
247

Laurel
252

Woodland
246

Stargazer
251

Volcanic
244

CLEAN IMPACT **TEXTILES**[®]

duvaltex

USA & INTERNATIONAL | T 800-544-0200
CANADA | T 418 227-9897
For samples, visit duvaltex.com



FC-2199 25/05

Recycled Content

Seating

Open House 2334

White*
2664

Birch
2129

Vanilla
2130

Angora
2035

Cumin
2050

Goose
2049

Fossil
2093

Graphite
2079

Coffee Bean
2083

Onyx
2016

Slate
2017

Asteroid
2053

Wolf
2027

Quarry Blue
2026

Waterfall
2691

Pool
2842

Lapis
2094

Thistle
2085

Cobalt
2045

Midnight
2025

Eucalyptus
2047

Willow
2028

Green Apple
2087

Fern
2840

Turquoise
2841

Deep Water
2051

Pine Needle
2022

Aubergine
2036

Lemon
2839

Sunshine
2082

Goldenrod
2090

Straw
2034

Pumpkin
2021

Geranium
2084

Poppy
2091

Red Delicious
2014

Mulberry
2044

Orchid
2843

*Not recommended for use as Upholstery.

Open House 2334

Seating

Specifications

Content	100% post-consumer recycled polyester
Weight	13.1 ± 1.0 oz./lin. yd
Width	54" min. useable
Repeat	none

Cleaning Code

Standard Care Label W-S. Clean with water based cleaning agents, foam or pure, water free solvents. Vacuuming or light brushing is recommended to prevent dust and soil buildup. May also be disinfected with hydrogen peroxide, alcohol, and quaternary ammonium (quat) based cleaners.

Miscellaneous


- Application testing of this product is recommended.
- Colors may vary between dye lots.


Proudly woven in North America supporting our local communities.

Sustainability


100% recycled and recyclable

Performance


 **Colorfastness to light (AATCC 16.3 Option 3)**
Grade 4 min. at 40 hours

 **Colorfastness to crocking (AATCC 8)**
Grade 4 min. dry & Grade 3 min. wet

Breaking Strength (ASTM D5034)
275 lbf min. warp and fill

 **Seam Slippage (ASTM D4034)**
50 lbf min. warp and fill

Pilling Resistance (ASTM D3511)
Class 4 min.

 **Flammability**
CA Technical Bulletin 117-2013 Section 1
ASTM E84 Class I or A

 **Abrasion (ASTM D4157)**
250,000 double rubs min. cotton duck

*Multiple factors affect fabric durability and appearance retention, including end-user application and proper maintenance. Wyzenbeek results above 100,000 double rubs have not been shown to be an indicator of increased lifespan.

Certification Marks owned by the Association for Contract Textiles, Inc.

duvaltex

USA & INTERNATIONAL | T 800-544-0200
CANADA | T 418 227-9897
For samples, visit [duvaltex.com](https://www.duvaltex.com)



FC- 2334 25/02

Available with
and without Crypton*

Seating | Panel | Acoustic

Palette 2155

Cutch
1135

Chamomile
1131

Alkanet
1132

Cornflower
1151

Acorn
1137

Alder
1136

Artichoke
1145

Birch Bark
1133

Lichen
1149

Saxon Blue
1150

Sunflower
1144

Sandalwood
1143

Annatto
1142

Sorrel
1146

Spinach
1147

Nettle
1148

Indigo
1152

Knotweed
1153

Paprika
1141

Sumac
1140

Murex
1139

Walnut
1138

Iron
1134

Logwood
1154

Palette 2155

Seating | Panel | Acoustic

Available with and without Crypton*

*to order with Crypton add a "C" to the color number

Specifications

Content	100% polyester
Weight	12 ± 1.0 oz./lin. yd
Width	54" min. useable
Repeat	none
Backing	Crypton moisture barrier
Treatment	Crypton odor resistance
Tackable	yes

How to order Palette with Crypton

When ordering with Crypton add a "C" to the color number. ex.: 2155-1137C Acorn = with Crypton

Specifications and performance available on request.

Cleaning Code

Standard Care Label W-S. Clean with water based cleaning agents, foam or pure, water free solvents. Vacuuming or light brushing is recommended to prevent dust and soil buildup. May also be disinfected with hydrogen peroxide, alcohol, and quaternary ammonium (quat) based cleaners.

Miscellaneous


- Application testing of this product is recommended.
- Colors may vary between dye lots.
- This is a directional fabric.
- Tackable properties may vary depending on fabric structure and recovery characteristics.

Proudly woven in North America supporting our local communities.

Sustainability




Performance


 **Colorfastness to light (AATCC 16.3 Option 3)**
Grade 4 min. at 40 hours

 **Colorfastness to crocking (AATCC 8)**
Grade 4 min. dry & Grade 3 min. wet

Breaking Strength (ASTM D5034)
295 lbf min. warp and 280 lbf fill

 **Seam Slippage (ASTM D4034)**
85 lbf min. warp and 75 lbf fill

Pilling Resistance (ASTM D3511)
Class 4 min.

 **Flammability**
CA Technical Bulletin 117-2013 Section 1
ASTM E84 Class I or A


 *** Abrasion (ASTM D4157)**
100,000 double rubs min. cotton duck

Acoustical Performance

Our acoustic fabrics are all acoustically transparent. This represents the amount of sound that passes through the fabric.

Acoustic Transparency: 90%

For more detailed results, please consult our website.

 This pattern is included in the underwriters laboratory panel fabric recognition program. Additional testing of this U.L. recognized fabric is not required on approved panels from participating manufacturers.

*Certification Marks owned by the Association for Contract Textiles, Inc.

duvaltex

USA & INTERNATIONAL | T 800-544-0200
CANADA | T 418 227-9897

For samples, visit [duvaltex.com](https://www.duvaltex.com)



FC-2155 25/08

Poseidon 1306

Coralline
1294

Sea Spray
1290

Triggerfish
1281

Sargassum
1296

Red Algae
1285

Surf
1289

Ecosystem
1286

Beachrock
1295

Brittle Star
1284

Aquatic
1291

Kelp Forest
1287

Narwhal
1298

King Crab
1282

Sailfish
1292

Tidepool
1288

Manatee
1299

Archipelago
1283

Deep Blue
1293

Java Sea
1297

Orca
1300

Specifications

Content	90% post-consumer recycled polyester including ocean waste 10% polyester
Weight	18 ± 1.0 oz./lin. yd
Width	54" min. useable
Repeat	none
Tackable	yes

Cleaning Code

Standard Care Label W-S. Clean with water based cleaning agents, foam or pure, water free solvents. Vacuuming or light brushing is recommended to prevent dust and soil buildup. May also be disinfected with hydrogen peroxide, alcohol, and quaternary ammonium (quat) based cleaners.

Miscellaneous

- Application testing of this product is recommended.
- Colors may vary between dye lots.
- This is a directional fabric.
- Tackable properties may vary depending on fabric structure and recovery characteristics.

Proudly woven in North America supporting our local communities.

Sustainability





OCEAN WASTE CLEAN IMPACT TEXTILES™
For every pound of fabric produced, up to half a pound of marine waste is removed from the ocean.

SEAQUAL INITIATIVE

By partnering with the SEAQUAL INITIATIVE, we transform ocean waste into amazing textiles.

Duvaltex is an official and authorized advertiser of SEAQUAL® YARN, the SEAQUAL INITIATIVE and their related trademarks, under licence agreement. Only SEAQUAL licensees are permitted to publicly advertise details about SEAQUAL trademarks.

Performance


-  **Colorfastness to light (AATCC 16.3 Option 3)**
Grade 4 min. at 40 hours
-  **Colorfastness to crocking (AATCC 8)**
Grade 4 min. dry & Grade 4 min. wet
- Breaking Strength (ASTM D5034)**
480 lbf min. warp and 360 lbf min. fill
-  **Seam Slippage (ASTM D4034)**
105 lbf min. warp and 78 lbf min. fill
- Pilling Resistance (ASTM D3511)**
Class 4 min.
- Flammability**
CA Technical Bulletin 117-2013 Section 1
NFPA 260-2013 Class I
ASTM E84 Class I or A
-  **Abrasion (ASTM D4157)**
100,000 double rubs min. cotton duck

Acoustical Performance

Our acoustic fabrics are all acoustically transparent. This represents the amount of sound that passes through the fabric.

Acoustic Transparency: 90%

For more detailed results, please consult our website.

 This pattern is included in the underwriters laboratory panel fabric recognition program. Additional testing of this U.L. recognized fabric is not required on approved panels from participating manufacturers.

*Certification Marks owned by the Association for Contract Textiles, Inc.



C0 Stain Repellent

Seating

Punch Card 1242

Punch Card 1242

Seating

Specifications

Content	78% polyester 22% post-consumer recycled polyester
Weight	11.1 ± 1.0 oz./lin. yd
Width	54" min. useable
Repeat	25" vertical 12.5" horizontal
Backing	acrylic backcoating
Treatment	C0 stain repellent

Performance

	Colorfastness to light (AATCC 16.3 Option 3) Grade 4 min. at 40 hours
	Colorfastness to crocking (AATCC 8) Grade 4 min. dry & Grade 3 min. wet
	Breaking Strength (ASTM D5034) 280 lbf warp and 230 lbf fill
	Seam Slippage (ASTM D4034) 105 lbf warp and 60 lbf fill
	Pilling Resistance (ASTM D3511) Class 4
	Flammability CA Technical Bulletin 117-2013 Section 1
	Abrasion (ASTM D4157) 100,000 double rubs cotton duck

*Certification Marks owned by the Association for Contract Textiles, Inc.

Cleaning Code

Standard Care Label W-S. Clean with water based cleaning agents, foam or pure, water free solvents. Vacuuming or light brushing is recommended to prevent dust and soil buildup. May also be disinfected with hydrogen peroxide, alcohol, and quaternary ammonium (quat) based cleaners.

Miscellaneous

- Application testing of this product is recommended.
- Colors may vary between dye lots.
- This is a directional fabric.

Proudly woven in North America supporting our local communities.

Sustainability



		Alabaster 1301		Putty 1303
	Crimson 1307		Orange 1308	Crisp 1305
Sky 1306		Navy 1309	Burgundy 1311	Peat 1312
Silver Lining 1304		Cadet 1310	Carbon 1302	Abyss 1313

duvalttex

USA & INTERNATIONAL | T 800-544-0200
CANADA | T 418 227-9897
For samples, visit [t.com">duvaltt.com](https://www.duvalt<span style=)



FC-1242 25/10

Seating | Panel | Acoustic

Quadrille 4701

Cabaret
1002 Fair
1001

Fiesta
1008 Zest
1007

Gambol
1003 Carnival
1009 Jubilee
1011

Spring
1006 Escapade
1015 Revelry
1015 Soiree
1014

Shenanigan
1017 Regalia
1005 Opus
1012 Masquerade
1013

Quadrille 4701

Seating | Panel | Acoustic

Specifications

Content	53% polyester 47% pre-consumer recycled polyester
Weight	12.1 ± 1.0 oz./lin. yd
Width	54" min. useable
Repeat	none
Tackable	yes

Cleaning Code

Standard Care Label W-S. Clean with water based cleaning agents, foam or pure, water free solvents. Vacuuming or light brushing is recommended to prevent dust and soil buildup. May also be disinfected with hydrogen peroxide, alcohol, and quaternary ammonium (quat) based cleaners.

Miscellaneous

- Application testing of this product is recommended.
- Colors may vary between dye lots.
- This is a directional fabric.
- Tackable properties may vary depending on fabric structure and recovery characteristic

Proudly woven in North America supporting our local communities.

Sustainability



Performance

Colorfastness to light (AATCC 16.3 Option 3)
Grade 4 min. at 40 hours

Colorfastness to crocking (AATCC 8)
Grade 4 min. dry & Grade 3 min. wet

Breaking Strength (ASTM D5034)
245 lbf warp and 270 lbf fill

Seam Slippage (ASTM D4034)
70 lbf warp and 90 lbf fill

Pilling Resistance (ASTM D3511)
Class 4 min.

Flammability
CA Technical Bulletin 117-2013 Section 1
ASTM E84 Class I or A

Abrasion (ASTM D4157)
100,000 double rubs cotton duck

Acoustical Performance

Our acoustic fabrics are all acoustically transparent. This represents the amount of sound that passes through the fabric.

Acoustic Transparency: 90%

For more detailed results, please consult our website.

This pattern is included in the underwriters laboratory panel fabric recognition program. Additional testing of this U.L. recognized fabric is not required on approved panels from participating manufacturers.

*Certification Marks owned by the Association for Contract Textiles, Inc.

duvalttex

USA & INTERNATIONAL | T 800-544-0200
CANADA | T 418 227-9897
For samples, visit [tex.com">duvalttex.com](http://duvalt<span style=)



Biodegradable*
Bleach Cleanable
CO stain & water repellent

Seating

Reframe 9571/9572

Toasted
9572-4034

Matcha
9572-4030

Turmeric
9572-4032

Serene
9572-4031

Cinnabar
9572-4033

Nebbiolo
9572-4042

Blueberry
9572-4041

Froth
9571-4010

Vapor
9572-4020

Black Sesame
9572-4040

Seating

Reframe 9571/9572

Specifications

Content	100% post-consumer recycled biodegradable* polyester
Weight	13.5 ± 1.0 oz./lin. yd
Width	54" min. useable
Repeat	7.38" horizontal 5.88" vertical
Backing	biodegradable* acrylic backcoating
Treatment	CO stain & water repellent

Cleaning Code

Standard Care Label W-S. Clean with water based cleaning agents, foam or pure, water free solvents. Vacuuming or light brushing is recommended to prevent dust and soil buildup.

Bleach Cleanable - May be cleaned with a 10% bleach-to-water solution. Rinse well after cleaning. May also be disinfected with hydrogen peroxide, alcohol, and quaternary ammonium (quat) based cleaners.

Miscellaneous

- Application testing of this product is recommended.
- Colors may vary between dye lots.
- This is a directional fabric.

Proudly woven in North America supporting our local communities.

Sustainability

BIODEGRADABLE* CLEAN IMPACT TEXTILES® address the daunting problem of how to deal with polyester fabric at the end of its useful life.

Biodegradable* in landfill after 1,278 days (tested under ASTM D5511)

*Rate and extent of biodegradation into elements found in nature is 91% after 1,278 days under ASTM D5511 (Anaerobic Biodegradation of Plastic Materials Under High Solids Anaerobic Digestion Conditions). The test was done with the same component (PET) polyester and biocatalyst additive. No evidence of further degradation.

Performance

	Colorfastness to light (AATCC 16.3 Option 3) Grade 4 min. at 40 hours
	Colorfastness to crocking (AATCC 8) Grade 4 min. dry & Grade 4 min. wet
	Breaking Strength (ASTM D5034) 303 lbf min. warp and 325 lbf min. fill
	Seam Slippage (ASTM D4034) 120 lbf min. warp and 88 lbf min. fill
	Pilling Resistance (ASTM D3511) Class 4 min.
	Flammability CA Technical Bulletin 117-2013 Section 1 NFPA 260-2013 Class I
	Abrasion (ASTM D4157) 75,000 double rubs min. cotton duck

*Multiple factors affect fabric durability and appearance retention, including end-user application and proper maintenance. Wyzenbeek results above 100,000 double rubs have not been shown to be an indicator of increased lifespan.

Certification Marks owned by the Association for Contract Textiles, Inc.



Biodegradable*
Bleach Cleanable
CO stain & water repellent

Seating

Rise 9569/9570

Frost
9569-4010

Rain Song
9570-4021

Daybreak
9570-4022

Fog
9570-4020

Night Sky
9570-4041

Sunset
9570-4030

Shadow
9570-4031

Echo
9570-4040

CLEAN IMPACT **TEXTILES**

Seating

Rise 9569/9570

Specifications

Content	100% post-consumer recycled biodegradable* polyester
Weight	13.6 ± 1.0 oz./lin. yd
Width	54" min. useable
Repeat	2.38" horizontal 1.63" vertical
Backing	biodegradable* acrylic backcoating
Treatment	CO stain & water repellent

Cleaning Code

Standard Care Label W-S. Clean with water based cleaning agents, foam or pure, water free solvents. Vacuuming or light brushing is recommended to prevent dust and soil buildup.

Bleach Cleanable - May be cleaned with a 10% bleach-to-water solution. Rinse well after cleaning. May also be disinfected with hydrogen peroxide, alcohol, and quaternary ammonium (quat) based cleaners.

Miscellaneous

- Application testing of this product is recommended.
- Colors may vary between dye lots.
- This is a directional fabric.

Proudly woven in North America supporting our local communities.

Sustainability

BIODEGRADABLE* CLEAN IMPACT TEXTILES® address the daunting problem of how to deal with polyester fabric at the end of its useful life.

Biodegradable* in landfill after 1,278 days (tested under ASTM D5511)


*Rate and extent of biodegradation into elements found in nature is 91% after 1,278 days under ASTM D5511 (Anaerobic Biodegradation of Plastic Materials Under High Solids Anaerobic Digestion Conditions). The test was done with the same component (PET) polyester and biocatalyst additive. No evidence of further degradation.


duvalttex

USA & INTERNATIONAL | T 800-544-0200
CANADA | T 418 227-9897
For samples, visit [tex.com">duvalttex.com](http://duvalt<span style=)

CLEAN IMPACT **TEXTILES**

Performance


 **Colorfastness to light (AATCC 16.3 Option 3)**
Grade 4.5 min. at 40 hours


 **Colorfastness to crocking (AATCC 8)**
Grade 4.5 min. dry & Grade 4.5 min. wet

Breaking Strength (ASTM D5034)
275 lbf min. warp and 419 lbf min. fill

 **Seam Slippage (ASTM D4034)**
38 lbf min. warp and 60 lbf min. fill

Pilling Resistance (ASTM D3511)
Class 4.5 min.

 **Flammability**
CA Technical Bulletin 117-2013 Section 1
NFPA 260-2013 Class I

 **Abrasion (ASTM D4157)**
75,000 double rubs min. cotton duck

*Multiple factors affect fabric durability and appearance retention, including end-user application and proper maintenance. Wyzenbeek results above 100,000 double rubs have not been shown to be an indicator of increased lifespan.

Certification Marks owned by the Association for Contract Textiles, Inc.



FC-9569/9570 23/06

Biodegradable*

Seating

Seating

CLEAN IMPACT **TEXTILES**

Shift 2179

Shift 2179

Zephyr
942

Sauterne
921

Pastoral
941

Nimbus
925

Vapor
943

Blushing
922

Fjord
940

Steel
938

Pebbles
944

Fireclay
923

Bluenote
939

Umbra
937

Sienna
945

Ladybug
946

Midnight
924

Anthracite
926

Specifications

Content	100% post-consumer recycled biodegradable* polyester
Weight	12.3 ± 1.0 oz./lin. yd
Width	54" min. useable
Repeat	none
Backing	biodegradable* acrylic backcoating
Treatment	none

Cleaning Code

Standard Care Label W-S. Clean with water based cleaning agents, foam or pure, water free solvents. Vacuuming or light brushing is recommended to prevent dust and soil buildup. May also be disinfected with hydrogen peroxide, alcohol, and quaternary ammonium (quat) based cleaners..

Miscellaneous

- Application testing of this product is recommended.
- Colors may vary between dye lots.
- This is a directional fabric.

Proudly woven in North America supporting our local communities.






Sustainability

BIODEGRADABLE* CLEAN IMPACT TEXTILES® address the daunting problem of how to deal with polyester fabric at the end of its useful life.

Biodegradable* in landfill after 1,278 days (tested under ASTM D5511)

*Rate and extent of biodegradation into elements found in nature is 91% after 1,278 days under ASTM D5511 (Anaerobic Biodegradation of Plastic Materials Under High Solids Anaerobic Digestion Conditions). The test was done with the same component (PET) polyester and biocatalyst additive. No evidence of further degradation.

Performance

-  **Colorfastness to light (AATCC 16.3 Option 3)**
Grade 4.5 min. at 40 hours
-  **Colorfastness to crocking (AATCC 8)**
Grade 4 min. dry & Grade 4.5 min. wet
- Breaking Strength (ASTM D5034)**
245 lbf min. warp and 294 lbf min. fill
-  **Seam Slippage (ASTM D4034)**
100 lbf min. warp and 108 lbf min. fill
- Pilling Resistance (ASTM D3511)**
Class 4 min.
-  **Flammability**
CA Technical Bulletin 117-2013 Section 1
NFPA 260-2013 Class I
-  **Abrasion (ASTM D4157)**
100,000 double rubs min. cotton duck

*Multiple factors affect fabric durability and appearance retention, including end-user application and proper maintenance. Wyzenbeek results above 100,000 double rubs have not been shown to be an indicator of increased lifespan.

Certification Marks owned by the Association for Contract Textiles, Inc.

CLEAN IMPACT **TEXTILES**

duvaltex

USA & INTERNATIONAL | T 800-544-0200
CANADA | T 418 227-9897
For samples, visit duvaltex.com



Ocean Waste
Biodegradable*

Seating | Panel | Acoustic

Tidal 2180

CLEAN IMPACT **TEXTILES**[®]

Day Break
954

Sea Salt
941

Seafoam
942

Freshwater
950

Sunshine
955

Drizzle
943

Mineral
951

Kelp
952

Dewpoint
956

Drift
944

Wave
949

Algae
953

Sunset
957

Reef
958

Wharf
948

Dive
945

Coral
959

Cordelia
960

Mariner
947

Jetty
946

CLEAN IMPACT **TEXTILES**[®]

Tidal 2180

Specifications

Content	42% post-consumer recycled biodegradable* polyester including ocean waste 58% post-consumer recycled biodegradable* polyester
Weight	12.5 ± 1.0 oz./lin. yd
Width	54" min. useable
Repeat	none
Tackable	yes

Cleaning Code

Standard Care Label W-S. Clean with water based cleaning agents, foam or pure, water free solvents. Vacuuming or light brushing is recommended to prevent dust and soil buildup. May also be disinfected with hydrogen peroxide, alcohol, and quaternary ammonium (quat) based cleaners.

Miscellaneous

- Application testing of this product is recommended.
- Colors may vary between dye lots.
- This is a directional fabric.
- Tackable properties may vary depending on fabric structure and recovery characteristics.

Proudly woven in North America supporting our local communities.

Sustainability

OCEAN WASTE CLEAN IMPACT TEXTILES[®]

For every pound of fabric produced, up to half a pound of marine waste is removed from the ocean.

SEAQUAL INITIATIVE

By partnering with the SEAQUAL INITIATIVE, we transform ocean waste into amazing textiles.

BIODEGRADABLE* CLEAN IMPACT TEXTILES[®]





address the daunting problem of how to deal with polyester fabric at the end of its useful life.

Biodegradable* in landfill after 1,278 days (tested under ASTM D5511)

*Rate and extent of biodegradation into elements found in nature is 91% after 1,278 days under ASTM D5511 (Anaerobic Biodegradation of Plastic Materials Under High Solids Anaerobic Digestion Conditions). The test was done with the same component (PET) polyester and biocatalyst additive. No evidence of further degradation.

Duvaltex is an official and authorized advertiser of SEAQUAL[®] YARN, the SEAQUAL INITIATIVE and their related trademarks, under licence agreement. Only SEAQUAL licensees are permitted to publicly advertise details about SEAQUAL trademarks.

Performance


	Colorfastness to light (AATCC 16.3 Option 3) Grade 4 min. at 40 hours
	Colorfastness to crocking (AATCC 8) Grade 4.5 min. dry & Grade 4.5 min. wet
	Breaking Strength (ASTM D5034) 309 lbf min. warp and 238 lbf min. fill
	Seam Slippage (ASTM D4034) 115 lbf min. warp and 103 lbf min. fill
	Pilling Resistance (ASTM D3511) Class 4 min.
	Flammability CA Technical Bulletin 117-2013 Section 1 NFPA 260-2013 Class I ASTM E84 Class I or A
	Abrasion (ASTM D4157) 75,000 double rubs min. cotton duck

Acoustical Performance

Our acoustic fabrics are all acoustically transparent. This represents the amount of sound that passes through the fabric.

Acoustic Transparency: 90%

For more detailed results, please consult our website.

 **This pattern is included in the underwriters laboratory panel fabric recognition program. Additional testing of this U.L. recognized fabric is not required on approved panels from participating manufacturers.**

*Certification Marks owned by the Association for Contract Textiles, Inc.

duvaltex

USA & INTERNATIONAL | T 800-544-0200

CANADA | T 418 227-9897

For samples, visit duvaltex.com



FC-2180 25/09

To the Point 4732

Marigold 1407	Amaryllis 1408	Bluegrass 1403		
	Gravel 1413	Azalea 1410	Currant 1411	Cobalt 1402
Almond 1414	Moss 1404	Cattail 1417	Elderberry 1409	Indigo 1401
Kiwi 1405	Parrot 1406	Coffee 1416	Cinder 1412	Ebony 1415

To the Point 4732

Specifications

Content	56% polyester 44% post-consumer recycled polyester
Weight	8.7 ± 0.5 oz./lin. yd
Width	54" min. useable
Repeat	none
Backing	SRB backcoating
Treatment	C0 stain repellent

Cleaning Code

Standard Care Label W-S. Clean with water based cleaning agents, foam or pure, water free solvents. Vacuuming or light brushing is recommended to prevent dust and soil buildup. May also be disinfected with hydrogen peroxide, alcohol, and quaternary ammonium (quat) based cleaners.

Miscellaneous




- Application testing of this product is recommended.
- Colors may vary between dye lots.
- This is a directional fabric.

Proudly woven in North America supporting our local communities.

Sustainability



Performance

	Colorfastness to light (AATCC 16.3 Option 3) Grade 4 min. at 40 hours
	Colorfastness to crocking (AATCC 8) Grade 4 min. dry & Grade 3 min. wet
	Breaking Strength (ASTM D5034) 120 lbf min. warp and 150 lbf min. fill
	Seam Slippage (ASTM D4034) 30 lbf min. warp and 45 lbf min. fill
	Pilling Resistance (ASTM D3511) Class 4 min.
	Flammability CA Technical Bulletin 117-2013 Section 1
	Abrasion (ASTM D4157) 50,000 double rubs cotton duck

*Certification Marks owned by the Association for Contract Textiles, Inc.



Biodegradable*

Seating

Tweedscape 2193

CLEAN IMPACT **TEXTILES**[®]

Tweedscape 2193

Specifications

Content	100% recycled biodegradable* polyester
Weight	12.4 ± 0.5 oz./lin. yd
Width	54" min. useable
Repeat	11" vertical 12.25" horizontal
Backing	biodegradable* acrylic backcoating
Treatment	none

Cleaning Code

Standard Care Label W-S. Clean with water based cleaning agents, foam or pure, water free solvents. Vacuuming or light brushing is recommended to prevent dust and soil buildup.

Miscellaneous

- Application testing of this product is recommended.
- Colors may vary between dye lots.
- This is a directional fabric.

Proudly woven in North America supporting our local communities.






Sustainability

BIODEGRADABLE* CLEAN IMPACT TEXTILES[®] address the daunting problem of how to deal with polyester fabric at the end of its useful life.

Biodegradable* in landfill after 1,278 days (tested under ASTM D5511)

*Rate and extent of biodegradation into elements found in nature is 91% after 1,278 days under ASTM D5511 (Anaerobic Biodegradation of Plastic Materials Under High Solids Anaerobic Digestion Conditions). The test was done with the same component (PET) polyester and biocatalyst additive. No evidence of further degradation.

Performance

-  **Colorfastness to light (AATCC 16.3 Option 3)**
Grade 4.5 min. at 40 hours
-  **Colorfastness to crocking (AATCC 8)**
Grade 4 min. dry & Grade 4 min. wet
- Breaking Strength (ASTM D5034)**
208 lbf min. warp and 226 lbf min. fill
-  **Seam Slippage (ASTM D4034)**
98 lbf min. warp and 97 lbf min. fill
- Pilling Resistance (ASTM D3511)**
Class 4 min.
-  **Flammability**
CA Technical Bulletin 117-2013 Section 1
NFPA 260-2013 Class I
-  *** Abrasion (ASTM D4157)**
100,000 double rubs min. cotton duck

Certification Marks owned by the Association for Contract Textiles, Inc.

Birch
101

Bluff
102

Sparrow
201

Moonlight
105

Rose Beige
103

North Shore
301

Aqua Mist
104

Ash
202

Mesa
203

Black Feather
305

Eucalyptus
302

Steel
304

Twig
303

CLEAN IMPACT **TEXTILES**[®]

duvalttex

USA & INTERNATIONAL | T 800-544-0200
CANADA | T 418 227-9897
For samples, visit [tex.com](http://duvalt<span style=)



FC-2193 25/03