

# **PANEL AND ACOUSTIC TEXTILES**

## **DIGITAL BINDER**



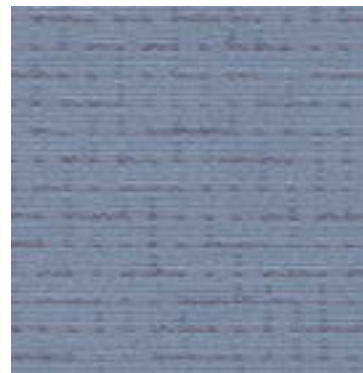
duvaltex

Panel

# Amaze 2139



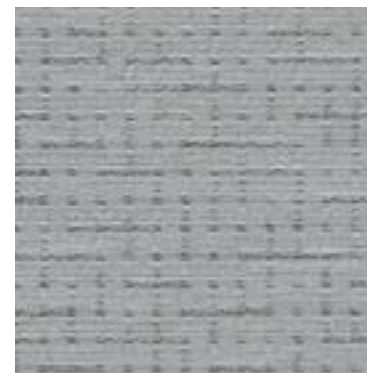
Platinum  
1□60



Sky  
1□68



Stone  
1□61



Fog  
1□65



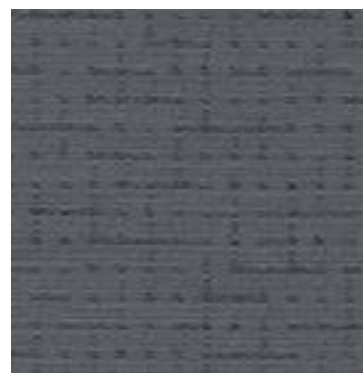
Steel  
1□66



Stone  
1□63



Morel  
1□64



Flannel  
1□62

# Amaze 2139

Panel

## Specifications

<b>Content</b>	82% polyester 18% post-consumer recycled polyester
<b>Weight</b>	12.9 ± 1.0 oz./lin. yd
<b>Width</b>	66" min. useable
<b>Repeat</b>	11.7" vertical   12.8" horizontal
<b>Tackable</b>	yes

## Cleaning Code

Standard Care Label W-S. Clean with water based cleaning agents, foam or pure, water free solvents. Vacuuming or light brushing is recommended to prevent dust and soil buildup. May also be disinfected with hydrogen peroxide, alcohol, and quaternary ammonium (quat) based cleaners.

## Miscellaneous

- Application testing of this product is recommended.
- Colors may vary between dye lots.
- This is a directional fabric.
- Tackable properties may vary depending on fabric structure and recovery characteristics.

**Proudly woven in North America supporting our local communities.**





## Sustainability




## Guilford of Maine Collection

Renowned for its exceptional performance and style, Guilford of Maine has set industry standards in acoustics and panel fabrics for many decades. We present the Guilford of Maine Collection - a selection of timeless fabrics.

## Performance

-  **Colorfastness to light (AATCC 16.3 Option 3)**  
Grade 4 min. at 40 hours
-  **Colorfastness to crocking (AATCC 8)**  
Grade 4 min. dry & Grade 3 min. wet
-  **Breaking Strength (ASTM D5034)**  
290 lbf min. warp and 230 lbf min. fill
-  **Flammability**  
ASTM E84 Class I or A

 This pattern is included in the underwriters laboratory panel fabric recognition program. Additional testing of this U.L. recognized fabric is not required on approved panels from participating manufacturers.

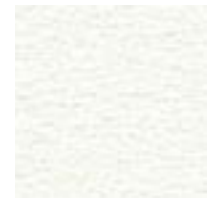
\*Certification Marks owned by the Association for Contract Textiles, Inc.



Recycled Content

Panel | Acoustic

# Anchorage 2335



White†  
2664



Drift  
8570



Pearl  
8573



Shell  
8572



Dune  
8583



North Star  
8578



Dew  
8579



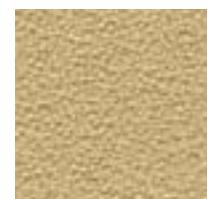
Foam  
8585



Fog  
8586



Overcast  
8575



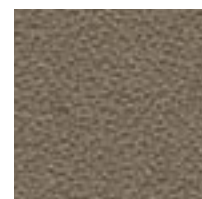
Vanilla  
2130



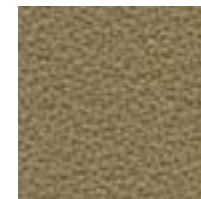
Birch  
2129



Angora  
2035



Goose  
2049



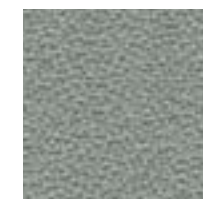
Cumin  
2050



Shadow  
6694



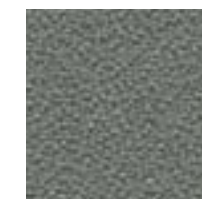
Breeze  
8582



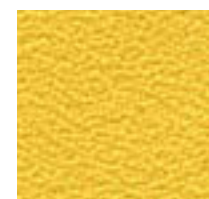
Slate  
2017



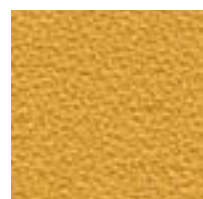
Wolf  
2027



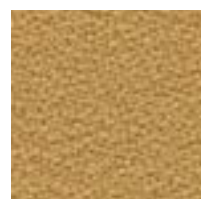
Asteroid  
2053



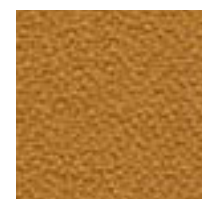
Lemon  
2839



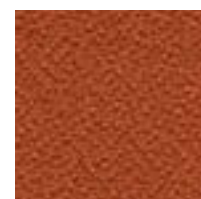
Sunshine  
2082



Straw  
2034



Goldenrod  
2090



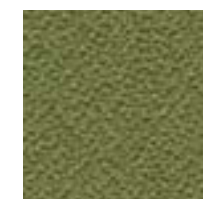
Pumpkin  
2021



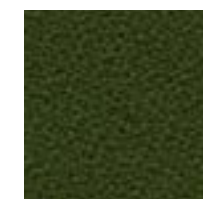
Eucalyptus  
2047



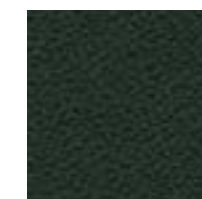
Green Apple  
2087



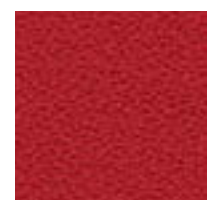
Willow  
2028



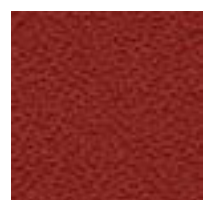
Fern  
2840



Pine Needle  
2022



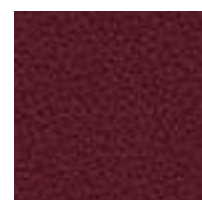
Geranium  
2084



Poppy  
2091



Red Delicious  
2014



Mulberry  
2044



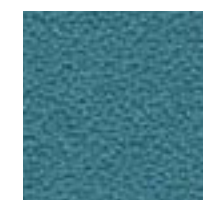
Orchid  
2843



Quarry Blue  
2026



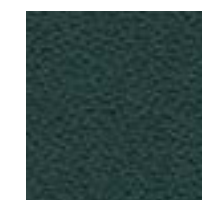
Bay  
8703



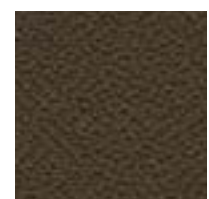
Waterfall  
2691



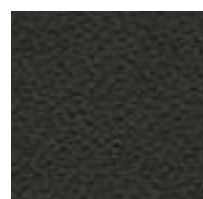
Turquoise  
2841



Deep Water  
2051



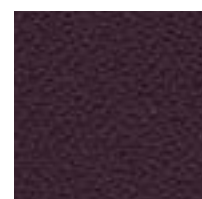
Fossil  
2093



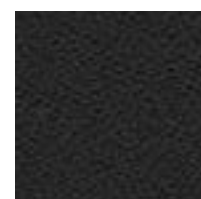
Graphite  
2079



Coffee Bean  
2083



Aubergine  
2036



Onyx  
2016



Pool  
2842



Lapis  
2094



Thistle  
2085



Cobalt  
2045



Midnight  
2025

† Suitable for printing

## Specifications

<b>Content</b>	100% post-consumer recycled polyester
<b>Weight</b>	2335 - 15.2 ± 1.0 oz./lin. yd
<b>Width</b>	2335 - 66" min. useable
<b>Repeat</b>	none
<b>Tackable</b>	yes

## Cleaning Code

Standard Care Label W-S. Clean with water based cleaning agents, foam or pure, water free solvents. Vacuuming or light brushing is recommended to prevent dust and soil buildup. May also be disinfected with hydrogen peroxide, alcohol, and quaternary ammonium (quat) based cleaners.

## Miscellaneous

- Application testing of this product is recommended.
- Colors may vary between dye lots.
- Dye lots may vary.
- Tackable properties may vary depending on fabric structure and recovery characteristics.

**Proudly woven in North America supporting our local communities.**


## Sustainability


100% recycled and recyclable





Renowned for its exceptional performance and style, Guilford of Maine has set industry standards in acoustics and panel fabrics for many decades. We present the Guilford of Maine Collection - a selection of timeless fabrics.

## Performance

 **Colorfastness to light (AATCC 16.3 Option 3)**  
Grade 4 min. at 40 hours

 **Colorfastness to crocking (AATCC 8)**  
Grade 4 min. dry & Grade 3 min. wet

 **Breaking Strength (ASTM D5034)**  
275 lbf min. warp and fill


 **Flammability**  
ASTM E84 Class I or A  
CAN/ULC-S102.2

## Acoustical Performance

Our acoustic fabrics are all acoustically transparent. This represents the amount of sound that passes through the fabric.

**Acoustic Transparency:** 85%

For more detailed results, please consult our website.

 This pattern is included in the underwriters laboratory panel fabric recognition program. Additional testing of this U.L. recognized fabric is not required on approved panels from participating manufacturers.

\*Multiple factors affect fabric durability and appearance retention, including end-user application and proper maintenance. Wyzenbeek results above 100,000 double rubs have not been shown to be an indicator of increased lifespan.

Certification Marks owned by the Association for Contract Textiles, Inc.



Recycled Content  
Bleach Cleanable

Panel | Acoustic

# Axiom 3947



Birch  
7010



Tin  
7040



Driftwood  
7030



Sparrow  
7031



Metallic  
7032



Graphite  
7050

duvaltex

# Axiom 3947

Panel | Acoustic

## Specifications

Content	100% pre-consumer recycled polyester
Weight	12.0 ± 1.0 oz./lin. yd
Width	66" min. useable
Repeat	none
Treatment	polyester binder
Tackable	yes

## Cleaning Code

Standard Care Label W-S. Clean with water based cleaning agents, foam or pure, water free solvents. Vacuuming or light brushing is recommended to prevent dust and soil buildup.

**Bleach Cleanable** - May be cleaned with a 10% bleach-to-water solution. Rinse well after cleaning. May also be disinfected with hydrogen peroxide, alcohol, and quaternary ammonium (quat) based cleaners.

## Miscellaneous

- Application testing of this product is recommended.
- Colors may vary between dye lots.
- This is a directional fabric.
- Tackable properties may vary depending on fabric structure and recovery characteristics.

**Proudly woven in North America supporting our local communities.**

## Sustainability

100% recycled and recyclable



duvaltex

## Performance

**Colorfastness to light (AATCC 16.3 Option 3)**  
Grade 4 min. at 40 hours

**Colorfastness to crocking (AATCC 8)**  
Grade 4 min. dry & Grade 3 min. wet

**Breaking Strength (ASTM D5034)**  
150 lbf min. warp and 175 lbf min. fill

**Flammability**  
ASTM E84 Class I or A

## Acoustical Performance

Our acoustic fabrics are all acoustically transparent. This represents the amount of sound that passes through the fabric.

**Acoustic Transparency:** 95%

For more detailed results, please consult our website.



**This pattern is included in the underwriters laboratory panel fabric recognition program. Additional testing of this U.L. recognized fabric is not required on approved panels from participating manufacturers.**

\*Certification Marks owned by the Association for Contract Textiles, Inc.

USA & INTERNATIONAL | T 800-544-0200  
CANADA | T 418 227-9897  
For samples, visit [duvaltex.com](http://duvaltex.com)



FC-3947 25/08

Recycled Content  
Bleach Cleanable

Panel | Acoustic

# Bailey 2299



3aris Frost  
□00



%elmont Silver  
□010



%axter %eige  
□011



Allagash Mist  
□040



3latinum  
□013



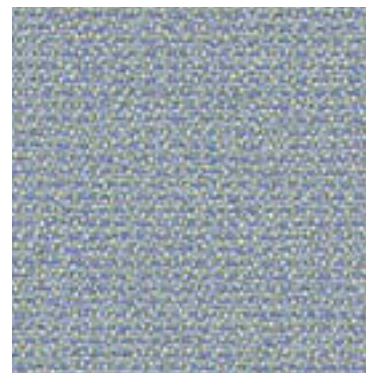
Sherman 3ewter  
□004



.haki  
□01



Cave  
□04



.ennebec %lue  
□041

# Bailey 2299

Panel | Acoustic

## Specifications

<b>Content</b>	100% pre-consumer recycled polyester
<b>Weight</b>	8.3 ± 0.5 oz./lin. yd
<b>Width</b>	66" min. useable
<b>Repeat</b>	none
<b>Treatment</b>	polyester binder
<b>Tackable</b>	yes

## Cleaning Code

Standard Care Label W-S. Clean with water based cleaning agents, foam or pure, water free solvents. Vacuuming or light brushing is recommended to prevent dust and soil buildup.

**Bleach Cleanable** - May be cleaned with a 10% bleach-to-water solution. Rinse well after cleaning. May also be disinfected with hydrogen peroxide, alcohol, and quaternary ammonium (quat) based cleaners.

## Miscellaneous

- Application testing of this product is recommended.
- Colors may vary between dye lots.
- This is a directional fabric.
- Tackable properties may vary depending on fabric structure and recovery characteristics.

**Proudly woven in North America supporting our local communities.**

## Sustainability

100% recycled and recyclable



Renowned for its exceptional performance and style, Guilford of Maine has set industry standards in acoustics and panel fabrics for many decades. We present the Guilford of Maine Collection - a selection of timeless fabrics.

## Performance

- Colorfastness to light (AATCC 16.3 Option 3)**  
Grade 4 min. at 40 hours
- Colorfastness to crocking (AATCC 8)**  
Grade 4 min. dry & Grade 3 min. wet
- Breaking Strength (ASTM D5034)**  
150 lbf min. warp and 100 lbf min. fill
- Flammability**  
ASTM E84 Class I or A

## Acoustical Performance

Our acoustic fabrics are all acoustically transparent. This represents the amount of sound that passes through the fabric.

**Acoustic Transparency:** 95%

For more detailed results, please consult our website.

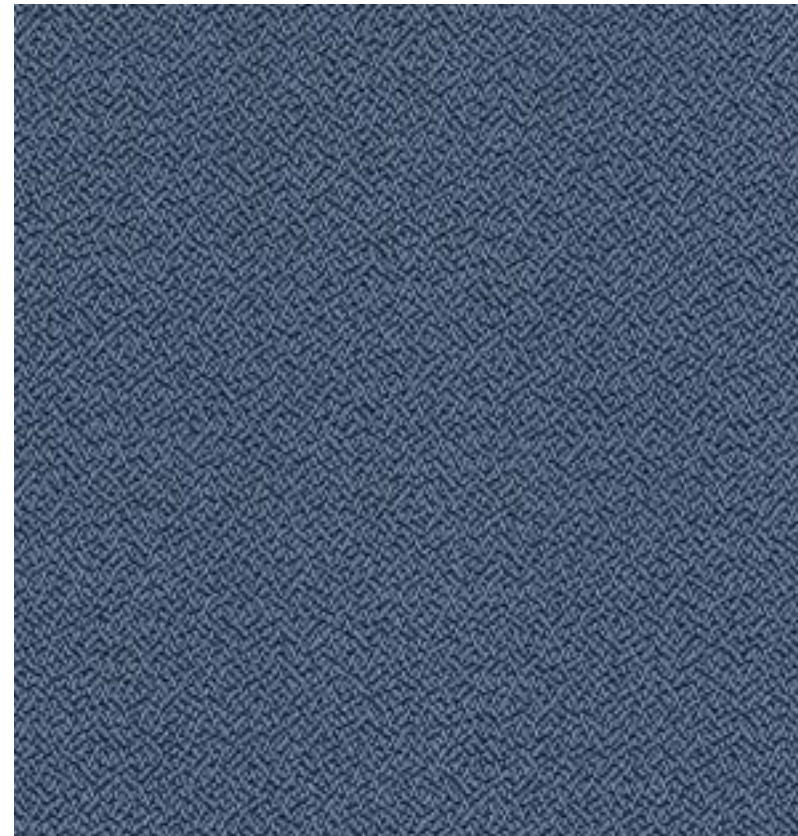
This pattern is included in the underwriters laboratory panel fabric recognition program. Additional testing of this U.L. recognized fabric is not required on approved panels from participating manufacturers.

\*Certification Marks owned by the Association for Contract Textiles, Inc.



Panel | Acoustic

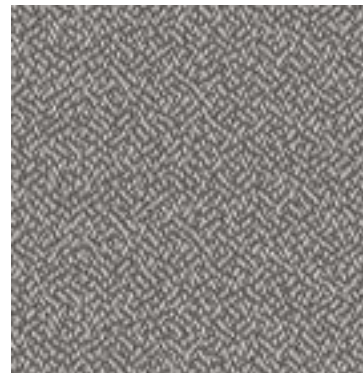
# Broadcast 2758



Chicory  
1205



Serengeti  
1196



Shade  
2372



Graphite  
2375



Mink  
2686

# Broadcast 2758

Panel | Acoustic

## Specifications

<b>Content</b>	100% polyester
<b>Weight</b>	9.5 ± 0.5 oz./lin. yd
<b>Width</b>	66" min. useable
<b>Repeat</b>	none
<b>Tackable</b>	yes

## Cleaning Code

Standard Care Label W-S. Clean with water based cleaning agents, foam or pure, water free solvents. Vacuuming or light brushing is recommended to prevent dust and soil buildup. May also be disinfected with hydrogen peroxide, alcohol, and quaternary ammonium (quat) based cleaners.

## Miscellaneous





- Application testing of this product is recommended.
- Colors may vary between dye lots.
- This is a directional fabric.
- Tackable properties may vary depending on fabric structure and recovery characteristics.

**Proudly woven in North America supporting our local communities.**

## **Guilford of Maine** Collection

Renowned for its exceptional performance and style, Guilford of Maine has set industry standards in acoustics and panel fabrics for many decades. We present the Guilford of Maine Collection - a selection of timeless fabrics.

## Performance


-  **Colorfastness to light (AATCC 16.3 Option 3)**  
Grade 4 min. at 40 hours
-  **Colorfastness to crocking (AATCC 8)**  
Grade 4 min. dry & Grade 3 min. wet
-  **Breaking Strength (ASTM D5034)**  
150 lbf min. warp and 100 lbf min. fill
-  **Flammability**  
ASTM E84 Class I or A

## Acoustical Performance

Our acoustic fabrics are all acoustically transparent. This represents the amount of sound that passes through the fabric.

**Acoustic Transparency:** 95%

For more detailed results, please consult our website.

 This pattern is included in the underwriters laboratory panel fabric recognition program. Additional testing of this U.L. recognized fabric is not required on approved panels from participating manufacturers.

\*Certification Marks owned by the Association for Contract Textiles, Inc.



Recycled Content  
Bleach Cleanable

Panel | Acoustic

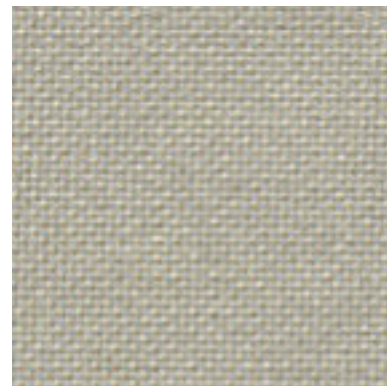
# Cape Cod 3073



Dune  
7040



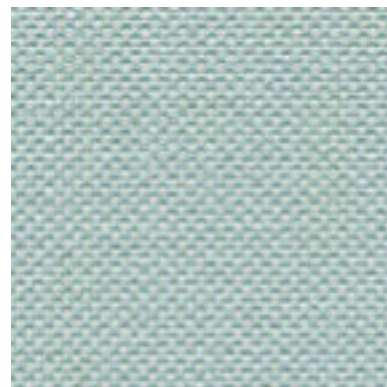
Linen  
7031



Seagull  
7072



Shale  
7042



Cloud  
7030



Surf  
7062



Bu  
7011

duvaltex

# Cape Cod 3073

Panel | Acoustic

## Specifications

<b>Content</b>	76% pre-consumer recycled polyester 24% post-consumer recycled polyester
<b>Weight</b>	12.4 ± 1.0 oz./lin. yd
<b>Width</b>	66" min. useable
<b>Repeat</b>	none
<b>Treatment</b>	polyester binder
<b>Tackable</b>	yes

## Cleaning Code

Standard Care Label W-S. Clean with water based cleaning agents, foam or pure, water free solvents. Vacuuming or light brushing is recommended to prevent dust and soil buildup.

**Bleach Cleanable** - May be cleaned with a 10% bleach-to-water solution. Rinse well after cleaning. May also be disinfected with hydrogen peroxide, alcohol, and quaternary ammonium (quat) based cleaners.

## Miscellaneous

- Application testing of this product is recommended.
- Colors may vary between dye lots.
- This is a directional fabric.
- Tackable properties may vary depending on fabric structure and recovery characteristics.

**Proudly woven in North America supporting our local communities.**

## Sustainability

100% recycled and recyclable



duvaltex

## Performance

- Colorfastness to light (AATCC 16.3 Option 3)**  
Grade 4 min. at 40 hours
- Colorfastness to crocking (AATCC 8)**  
Grade 4 min. dry & Grade 3 min. wet
- Breaking Strength (ASTM D5034)**  
150 lbf min. warp and fill
- Flammability**  
ASTM E84 Class I or A

## Acoustical Performance

Our acoustic fabrics are all acoustically transparent. This represents the amount of sound that passes through the fabric.

**Acoustic Transparency:** 95%

For more detailed results, please consult our website.

This pattern is included in the underwriters laboratory panel fabric recognition program. Additional testing of this U.L. recognized fabric is not required on approved panels from participating manufacturers.

\*Certification Marks owned by the Association for Contract Textiles, Inc.

USA & INTERNATIONAL | T 800-544-0200  
CANADA | T 418 227-9897  
For samples, visit [duvaltex.com](http://duvaltex.com)



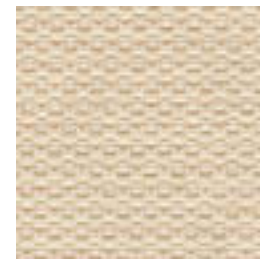
FC-3073 25/08

Panel | Acoustic

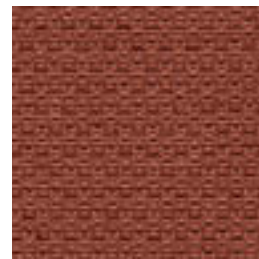
# Chase 2138



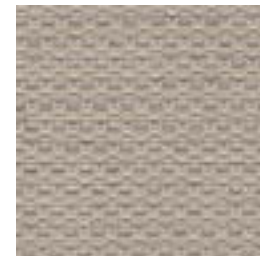
Shadow  
1246



Ecrú  
1241



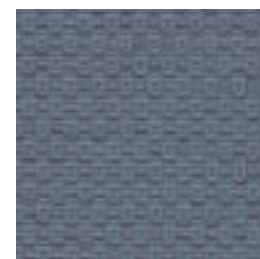
Red Clay  
1252



Mushroom  
1245



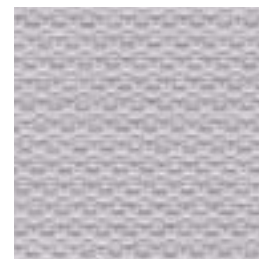
Ochre  
1251



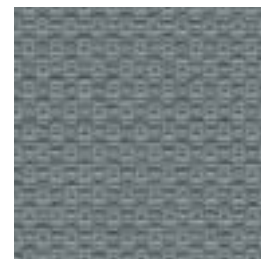
Chambray  
1249



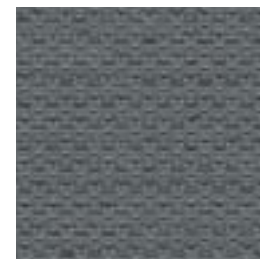
Moss  
1250



Coin  
1243



Pewter  
1247



Pumice  
1248

duvaltex

# Chase 2138

Panel | Acoustic

## Specifications

<b>Content</b>	74% polyester 26% post-consumer recycled polyester
<b>Weight</b>	13.3 ± 1.0 oz./lin. yd
<b>Width</b>	66" min. useable
<b>Repeat</b>	none
<b>Treatment</b>	polyester binder
<b>Tackable</b>	yes

## Cleaning Code

Standard Care Label W-S. Clean with water based cleaning agents, foam or pure, water free solvents. Vacuuming or light brushing is recommended to prevent dust and soil buildup. May also be disinfected with hydrogen peroxide, alcohol, and quaternary ammonium (quat) based cleaners.

## Miscellaneous

- Application testing of this product is recommended.
- Colors may vary between dye lots.
- This is a directional fabric.
- Tackable properties may vary depending on fabric structure and recovery characteristics.

**Proudly woven in North America supporting our local communities.**

duvaltex

USA & INTERNATIONAL | T 800-544-0200  
CANADA | T 418 227-9897  
For samples, visit [duvaltex.com](http://duvaltex.com)

## Performance

- Colorfastness to light (AATCC 16.3 Option 3)**  
Grade 4 min. at 40 hours
- Colorfastness to crocking (AATCC 8)**  
Grade 4 min. dry & Grade 3 min. wet
- Breaking Strength (ASTM D5034)**  
280 lbf min. warp and 200 lbf min. fill
- Flammability**  
ASTM E84 Class I or A

## Acoustical Performance

Our acoustic fabrics are all acoustically transparent. This represents the amount of sound that passes through the fabric.

**Acoustic Transparency:** 95%

For more detailed results, please consult our website.

This pattern is included in the underwriters laboratory panel fabric recognition program. Additional testing of this U.L. recognized fabric is not required on approved panels from participating manufacturers.

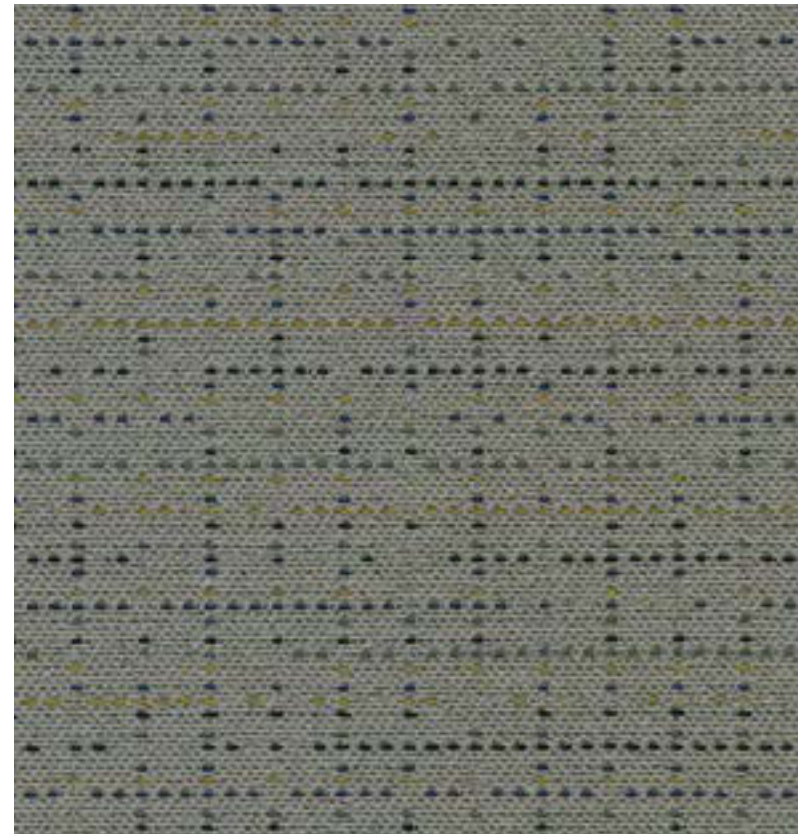
\*Certification Marks owned by the Association for Contract Textiles, Inc.



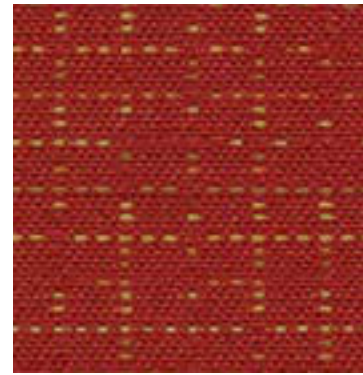
C0 Stain Repellent

Seating | Panel

# Couture 4858



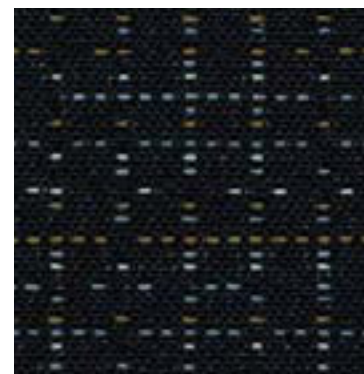
Thimble  
1756



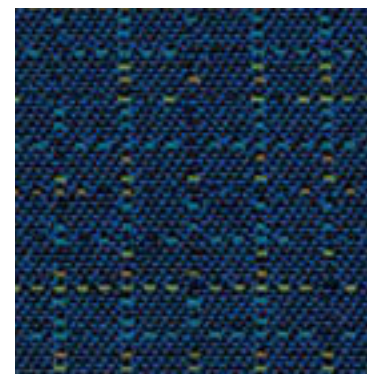
Basting  
1751



Shears  
1750



Seam  
1752



Tailor  
1757

# Couture 4858

Seating | Panel

## Specifications

<b>Content</b>	57% post-consumer recycled polyester 25% pre-consumer recycled polyester 18% polyester
<b>Weight</b>	9.2 ± 1.0 oz./lin. yd
<b>Width</b>	54" min. useable
<b>Repeat</b>	14.5" vertical   14" horizontal
<b>Backing</b>	acrylic backcoating
<b>Treatment</b>	C0 stain repellent
<b>Tackable</b>	yes

## Cleaning Code

Standard Care Label W-S. Clean with water based cleaning agents, foam or pure, water free solvents. Vacuuming or light brushing is recommended to prevent dust and soil buildup. May also be disinfected with hydrogen peroxide, alcohol, and quaternary ammonium (quat) based cleaners.

## Miscellaneous

- Application testing of this product is recommended.
- Colors may vary between dye lots.
- This is a directional fabric.
- Tackable properties may vary depending on fabric structure and recovery characteristics.

**Proudly woven in North America supporting our local communities.**

## Sustainability



## Performance

- Colorfastness to light (AATCC 16.3 Option 3)**  
Grade 4 min. at 40 hours
- Colorfastness to crocking (AATCC 8)**  
Grade 4 min. dry & Grade 3 min. wet
- Breaking Strength (ASTM D5034)**  
115 lbf warp and 85 lbf fill
- Seam Slippage (ASTM D4034)**  
55 lbf warp and 60 lbf fill
- Pilling Resistance (ASTM D3511)**  
Class 5
- Flammability**  
CA Technical Bulletin 117-2013 Section 1  
ASTM E84 Class I or A
- Abrasion (ASTM D4157)**  
100,000 double rubs cotton duck

This pattern is included in the underwriters laboratory panel fabric recognition program. Additional testing of this U.L. recognized fabric is not required on approved panels from participating manufacturers.

\*Certification Marks owned by the Association for Contract Textiles, Inc.

duvaltex

duvaltex

USA & INTERNATIONAL | T 800-544-0200  
CANADA | T 418 227-9897  
For samples, visit [ex.com">duvaltex.com](https://duvalt<span style=)



FC-4858 25/12

Recycled Content

Panel | Acoustic

# Dashing 1204



Dapper Grey  
1047



Polished Slate  
1044



Refined Marble  
1042



Antique Sage  
1045



Classic Silver  
1041



Genteel Beige  
1043



Bespoke Tan  
1046

duvaltex

# Dashing 1204

Panel | Acoustic

## Specifications

<b>Content</b>	92% post-consumer recycled polyester 8% pre-consumer recycled polyester
<b>Weight</b>	10.9 ± 1.0 oz./lin. yd
<b>Width</b>	66" min. useable
<b>Repeat</b>	2" vertical   2.4" horizontal

## Cleaning Code

Standard Care Label W-S. Clean with water based cleaning agents, foam or pure, water free solvents. Vacuuming or light brushing is recommended to prevent dust and soil buildup. May also be disinfected with hydrogen peroxide, alcohol, and quaternary ammonium (quat) based cleaners.

## Miscellaneous

- Application testing of this product is recommended.
- Colors may vary between dye lots.
- This is a directional fabric.

**Proudly woven in North America supporting our local communities.**

## Sustainability

100% recycled and recyclable



duvaltex

## Performance

- Colorfastness to light (AATCC 16.3 Option 3)**  
Grade 4 min. at 40 hours
- Colorfastness to crocking (AATCC 8)**  
Grade 4 min. dry & Grade 3 min. wet
- Breaking Strength (ASTM D5034)**  
240 lbf warp and 190 lbf fill
- Flammability**  
ASTM E84 Class I or A

## Acoustical Performance

Our acoustic fabrics are all acoustically transparent. This represents the amount of sound that passes through the fabric.

**Acoustic Transparency:** 85%

For more detailed results, please consult our website.

This pattern is included in the underwriters laboratory panel fabric recognition program. Additional testing of this U.L. recognized fabric is not required on approved panels from participating manufacturers.

\*Certification Marks owned by the Association for Contract Textiles, Inc.

USA & INTERNATIONAL | T 800-544-0200  
CANADA | T 418 227-9897  
For samples, visit [ex.com">duvaltex.com](https://duvalt<span style=)



FC-1204 25/03

Panel

# Dune 4505

Panel | Acoustic

## Dune 4505



Seagrass  
7109



White  
8888



Cloudburst  
6701



Breeze  
1280



Sandbar  
6700



Haze  
1203



Clear Sky  
1210



Windblown  
1201



Drift  
1200



Erosion  
1202



Basin  
1214



Nectar  
1208



Shell  
7082



Caribbean  
6658



Deep Night  
1218



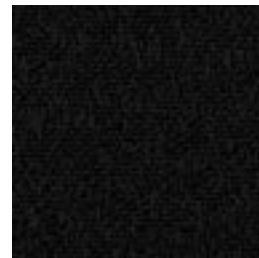
Kamelos  
1204



Boardwalk  
7110



Raven  
1215



Darkness  
1220

### Specifications

Content	100% polyester
Weight	11.0 ± 1.0 oz./lin. yd
Width	66" min. useable
Repeat	16.4" vertical   13.9" horizontal

### Cleaning Code

Standard Care Label W-S. Clean with water based cleaning agents, foam or pure, water free solvents. Vacuuming or light brushing is recommended to prevent dust and soil buildup. May also be disinfected with hydrogen peroxide, alcohol, and quaternary ammonium (quat) based cleaners.

### Miscellaneous

- Application testing of this product is recommended.
- Colors may vary between dye lots.
- This is a directional fabric.

Proudly woven in North America supporting our local communities.

### Sustainability



### Performance

- Colorfastness to light (AATCC 16.3 Option 3)**  
Grade 4 min. at 40 hours
- Colorfastness to crocking (AATCC 8)**  
Grade 4 min. dry & Grade 3 min. wet
- Breaking Strength (ASTM D5034)**  
160 lbf warp and 110 lbf fill
- Flammability**  
ASTM E84 Class I or A

### Acoustical Performance

Our acoustic fabrics are all acoustically transparent. This represents the amount of sound that passes through the fabric.

**Acoustic Transparency:** 85%

For more detailed results, please consult our website.

This pattern is included in the underwriters laboratory panel fabric recognition program. Additional testing of this U.L. recognized fabric is not required on approved panels from participating manufacturers.

\*Certification Marks owned by the Association for Contract Textiles, Inc.

duvaltex

duvaltex

USA & INTERNATIONAL | T 800-544-0200  
CANADA | T 418 227-9897  
For samples, visit [ex.com">duvaltex.com](https://www.duvalt<span style=)



FC-4505 25/03

Biodegradable\*

Panel | Acoustic

# Ease 1401/Expanse 1402



# Ease 1401/Expanse 1402 CLEAN IMPACT TEXTILES®

## Specifications

Pattern	Content	Weight	Width	Repeat	Tackable
Ease 1401	100% recycled biodegradable* polyester	11.5 ± 1.0 oz./lin. yd	66" min. useable	none	yes
Expanse 1402	100% post-consumer recycled biodegradable* polyester	11.4 ± 1.0 oz./lin. yd	66" min. useable	none	yes

## Cleaning Code

Standard Care Label W-S. Clean with water based cleaning agents, foam or pure, water free solvents. Vacuuming or light brushing is recommended to prevent dust and soil buildup.

## Miscellaneous

- Application testing of this product is recommended.
- Colors may vary between dye lots.
- These are directional fabrics.
- Tackable properties may vary depending on fabric structure and recovery characteristic

**Proudly woven in North America supporting our local communities.**

## Sustainability

**BIODEGRADABLE\* CLEAN IMPACT TEXTILES®** address the daunting problem of how to deal with polyester fabric at the end of its useful life.

Biodegradable\* in landfill after 1,278 days (tested under ASTM D5511)

\* Rate and extent of biodegradation into elements found in nature is 91% after 1,278 days under ASTM D5511 (Anaerobic Biodegradation of Plastic Materials Under High Solids Anaerobic Digestion Conditions). The test was done with the same component (PET) polyester and biocatalyst additive. No evidence of further degradation.

## Performance

- Colorfastness to light (AATCC 16.3 Option 3)**  
Ease: Grade 4.5 min. at 40 hours  
Expanse: Grade 4.5 min. at 40 hours
- Colorfastness to crocking (AATCC 8)**  
Ease: Grade 4.5 min. dry & Grade 4.5 min. wet  
Expanse: Grade 4.5 min. dry & Grade 4.5 min. wet
- Breaking Strength (ASTM D5034)**  
Ease: 253 lbf min. warp and 192 lbf min. fill  
Expanse: 245 lbf min. warp and 226 lbf min. fill
- Flammability**  
Ease: ASTM E84 Class I or A  
Expanse: ASTM E84 Class I or A

## Acoustical Performance

Our acoustic fabrics are all acoustically transparent. This represents the amount of sound that passes through the fabric.

**Acoustic Transparency:** 90%

For more detailed results, please consult our website.

This pattern is included in the underwriters laboratory panel fabric recognition program. Additional testing of this U.L. recognized fabric is not required on approved panels from participating manufacturers.

Certification Marks owned by the Association for Contract Textiles, Inc.

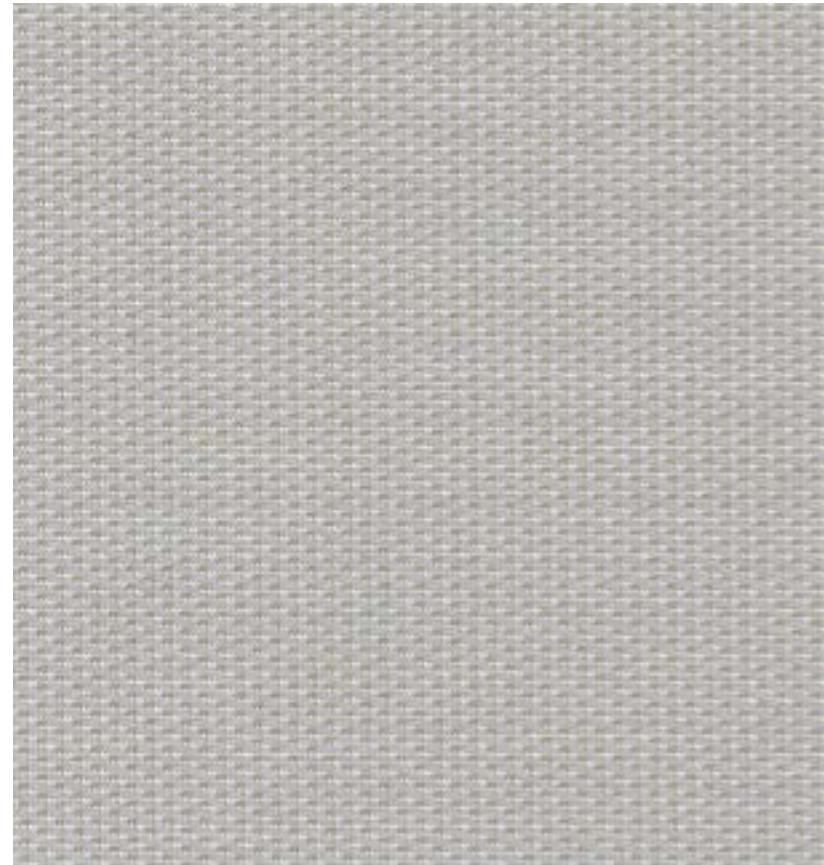


Panel

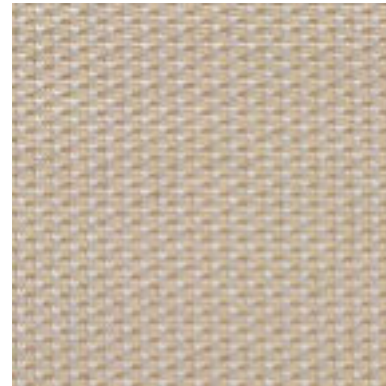
# Essence 4873

# Essence 4873

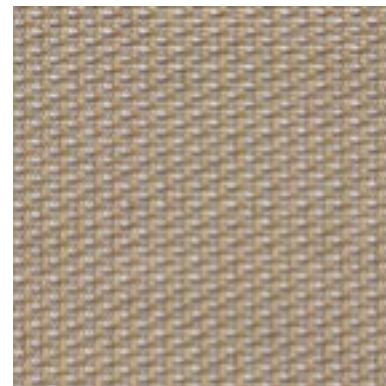
Panel | Acoustic



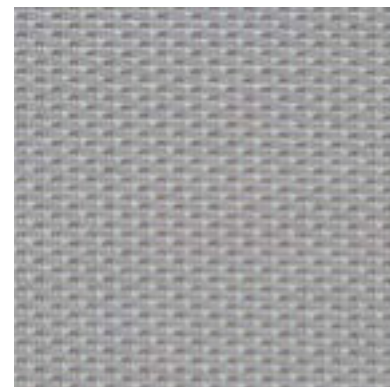
Ash  
2634



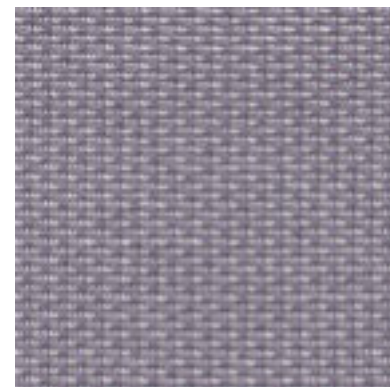
Cream  
2631



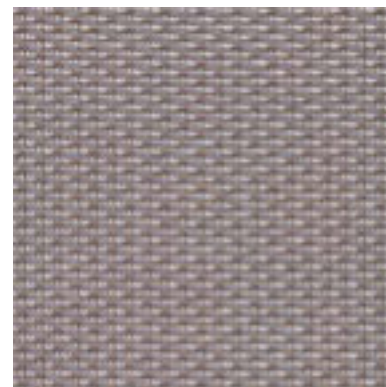
Tobacco  
7635



Heather  
2633



Boysenberry  
2639



Charcoal Melange  
2637

## Specifications

<b>Content</b>	100% polyester
<b>Weight</b>	11.8 ± 1.0 oz./lin. yd
<b>Width</b>	66" min. useable
<b>Repeat</b>	.27" vertical   .18" horizontal
<b>Tackable</b>	yes

## Cleaning Code

Standard Care Label W-S. Clean with water based cleaning agents, foam or pure, water free solvents. Vacuuming or light brushing is recommended to prevent dust and soil buildup. May also be disinfected with hydrogen peroxide, alcohol, and quaternary ammonium (quat) based cleaners.

## Miscellaneous

- Application testing of this product is recommended.
- Colors may vary between dye lots.
- This is a directional fabric.
- Tackable properties may vary depending on fabric structure and recovery characteristics.

**Proudly woven in North America supporting our local communities.**

## Sustainability



Renowned for its exceptional performance and style, Guilford of Maine has set industry standards in acoustics and panel fabrics for many decades. We present the Guilford of Maine Collection - a selection of timeless fabrics.

## Performance

- Colorfastness to light (AATCC 16.3 Option 3)**  
Grade 4 min. at 40 hours
- Colorfastness to crocking (AATCC 8)**  
Grade 4 min. dry & Grade 3 min. wet
- Breaking Strength (ASTM D5034)**  
160 lbf warp and 105 lbf fill
- Flammability**  
ASTM E84 Class I or A

## Acoustical Performance

Our acoustic fabrics are all acoustically transparent. This represents the amount of sound that passes through the fabric.

**Acoustic Transparency:** 80%

For more detailed results, please consult our website.

This pattern is included in the underwriters laboratory panel fabric recognition program. Additional testing of this U.L. recognized fabric is not required on approved panels from participating manufacturers.

\*Certification Marks owned by the Association for Contract Textiles, Inc.

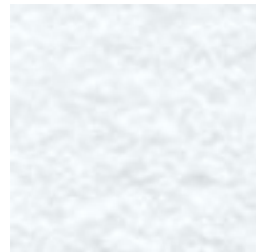


Panel | Acoustic

# Felt 9900



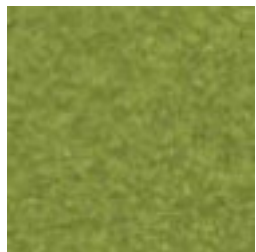
Dune  
3062



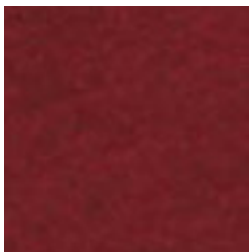
White\*  
8888



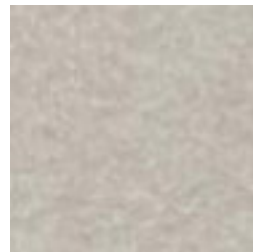
Maize  
3204



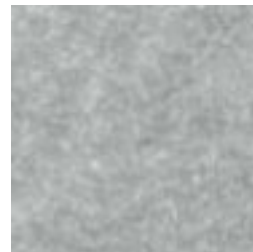
Pear  
3210



Cherry  
3362



Ivory  
3206



Aluminum  
3055



Liberty  
3053



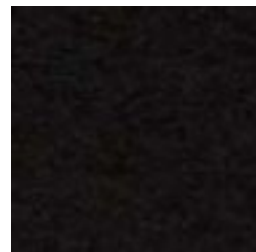
Deep Sea  
3054



Pebble  
3056



Sterling  
3057



Ebony  
3059

duvaltex

# Felt 9900

Panel | Acoustic

## Specifications

<b>Content</b>	80% polyester 20% post-consumer recycled polyester
<b>Weight</b>	10.2 ± 1.0 oz./lin. yd
<b>Width</b>	64" min. useable
<b>Repeat</b>	none
<b>Tackable</b>	yes

## Cleaning Code

Standard Care Label W-S. Clean with water based cleaning agents, foam or pure, water free solvents. Vacuuming or light brushing is recommended to prevent dust and soil buildup. May also be disinfected with hydrogen peroxide, alcohol, and quaternary ammonium (quat) based cleaners.

## Miscellaneous

- Application testing of this product is recommended.
- Colors may vary between dye lots.
- This is a non-directional fabric.
- Tackable properties may vary depending on fabric structure and recovery characteristics.

\*Light fabric are subject to transparency issues depending on lighting intensity and internal structure. Application testing of this product is recommended.

This product is a **Feltväri™** non-woven.

**Proudly made in North America supporting our local communities.**

duvaltex

USA & INTERNATIONAL | T 800-544-0200  
CANADA | T 418 227-9897  
For samples, visit [duvaltex.com](http://duvaltex.com)

## Performance

- Colorfastness to light (AATCC 16.3 Option 3)**  
Grade 4 min. at 40 hours
- Colorfastness to crocking (AATCC 8)**  
Grade 4 min. dry & Grade 3 min. wet
- Breaking Strength (ASTM D5034)**  
130 lbf min. warp and 95 lbf min. fill
- Flammability**  
ASTM E84 Class I or A

## Acoustical Performance

Our acoustic fabrics are all acoustically transparent. This represents the amount of sound that passes through the fabric.

**Acoustic Transparency:** 99%

For more detailed results, please consult our website.

This pattern is included in the underwriters laboratory panel fabric recognition program. Additional testing of this U.L. recognized fabric is not required on approved panels from participating manufacturers.

\*Certification Marks owned by the Association for Contract Textiles, Inc.



FC-9900 25/09

Recycled Content  
Bleach Cleanable

Panel | Acoustic

# FR701® 2100



 **Guilford of Maine**  
Collection

duvaltx

# FR701® 2100

## Specifications

<b>Content</b>	100% post-consumer recycled polyester
<b>Weight</b>	16.0 ± 0.5 oz./lin. yd
<b>Width</b>	66" min. useable
<b>Repeat</b>	none
<b>Tackable</b>	yes

## Cleaning Code

Standard Care Label W-S. Clean with water based cleaning agents, foam or pure, water free solvents. Vacuuming or light brushing is recommended to prevent dust and soil buildup.

**Bleach Cleanable** - May be cleaned with a 10% bleach-to-water solution. Rinse well after cleaning. May also be disinfected with hydrogen peroxide, alcohol, and quaternary ammonium (quat) based cleaners.

## Miscellaneous

- Application testing of this product is recommended.
- Colors may vary between dye lots.
- This is a non-directional fabric.
- Tackable properties may vary depending on fabric structure and recovery characteristics.

**Proudly woven in North America supporting our local communities.**

## Sustainability





100% recycled and recyclable



 **Guilford of Maine**  
Collection

Renowned for its exceptional performance and style, Guilford of Maine has set industry standards in acoustics and panel fabrics for many decades. We present the Guilford of Maine Collection - a selection of timeless fabrics.

## Performance


-  **Colorfastness to light (AATCC 16.3 Option 3)**  
Grade 4 min. at 40 hours
-  **Colorfastness to crocking (AATCC 8)**  
Grade 4 min. dry & Grade 3 min. wet
-  **Breaking Strength (ASTM D5034)**  
150 lbf min. warp and fill
-  **Flammability**  
ASTM E84 Class I or A  
CAN/ULC-S102.2

## Acoustical Performance

Our acoustic fabrics are all acoustically transparent. This represents the amount of sound that passes through the fabric.

**Acoustic Transparency:** 95%

For more detailed results, please consult our website.

 This pattern is included in the underwriters laboratory panel fabric recognition program. Additional testing of this U.L. recognized fabric is not required on approved panels from participating manufacturers.

Certification Marks owned by the Association for Contract Textiles, Inc.

USA & INTERNATIONAL | T 800-544-0200  
CANADA | T 418 227-9897  
For samples, visit [x.com">duvaltx.com](http://duvalt<span style=)



FC-2100 25/09

Panel | Acoustic

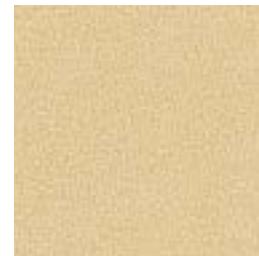
# Framework 2762



Grotto  
2829



Dove Gray  
2689



Chamois  
2552



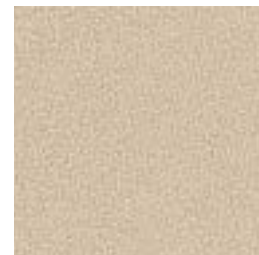
Sandy Pebble  
2554



Capri  
2831



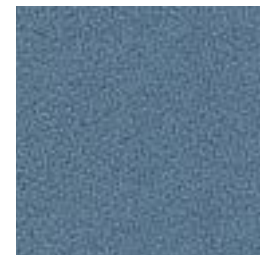
Gray Blue  
2553



Beige  
2687



Eucalyptus  
2555



Blue Smooth  
2519



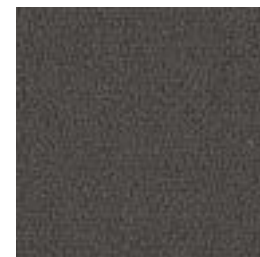
Stone  
2688



Cappuccino  
2832



Elephant  
2690



Espresso  
2833

# Framework 2762

Panel | Acoustic

## Specifications

Content	100% polyester
Weight	9.5 ± 0.5 oz./lin. yd
Width	66" min. useable
Repeat	none
Tackable	yes

## Cleaning Code

Standard Care Label W-S. Clean with water based cleaning agents, foam or pure, water free solvents. Vacuuming or light brushing is recommended to prevent dust and soil buildup. May also be disinfected with hydrogen peroxide, alcohol, and quaternary ammonium (quat) based cleaners.

## Miscellaneous





- Application testing of this product is recommended.
- Colors may vary between dye lots.
- This is a directional fabric.
- Tackable properties may vary depending on fabric structure and recovery characteristics.

**Proudly woven in North America supporting our local communities.**

## Guilford of Maine Collection

Renowned for its exceptional performance and style, Guilford of Maine has set industry standards in acoustics and panel fabrics for many decades. We present the Guilford of Maine Collection - a selection of timeless fabrics.

## Performance


-  **Colorfastness to light (AATCC 16.3 Option 3)**  
Grade 4 min. at 40 hours
-  **Colorfastness to crocking (AATCC 8)**  
Grade 4 min. dry & Grade 3 min. wet
-  **Breaking Strength (ASTM D5034)**  
150 lbf min. warp and 125 lbf min. fill
-  **Flammability**  
ASTM E84 Class I or A

## Acoustical Performance

Our acoustic fabrics are all acoustically transparent. This represents the amount of sound that passes through the fabric.

**Acoustic Transparency:** 90%

For more detailed results, please consult our website.

 This pattern is included in the underwriters laboratory panel fabric recognition program. Additional testing of this U.L. recognized fabric is not required on approved panels from participating manufacturers.

\*Certification Marks owned by the Association for Contract Textiles, Inc.



Ocean Waste  
Biodegradable\*

Seating | Panel | Acoustic

# Gather 2195

CLEAN IMPACT **TEXTILES**

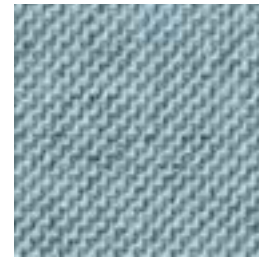
## Gather 2195



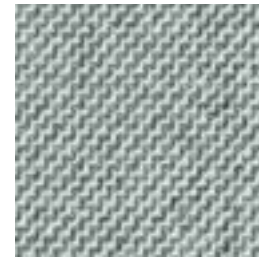
Halo  
422



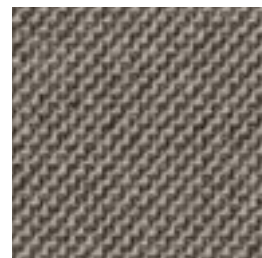
Haze  
430



Breeze  
426



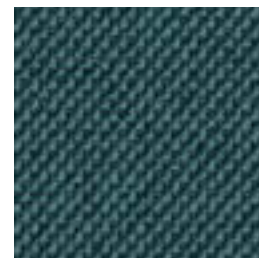
Pearl  
411



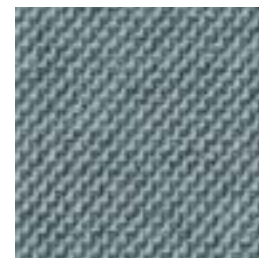
Pecan  
412



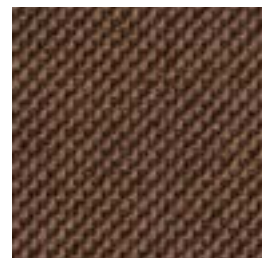
Cornflower  
429



Storm  
425



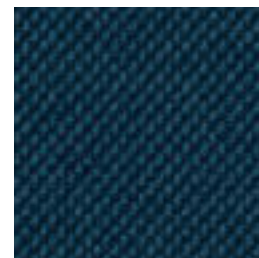
Mineral Rock  
415



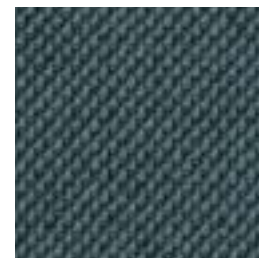
Rustic  
420



Dusk  
428



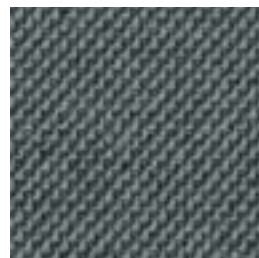
Twilight  
427



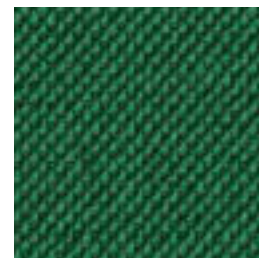
Anchor  
416



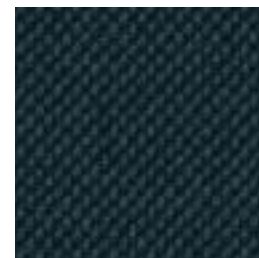
Sedona  
421



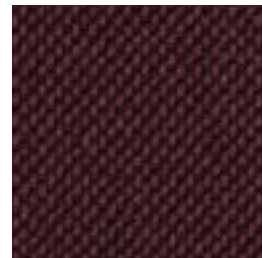
Plum Grey  
413



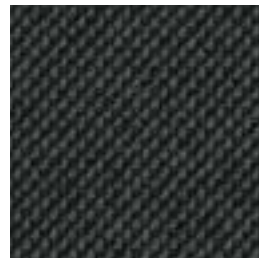
Bottle Green  
424



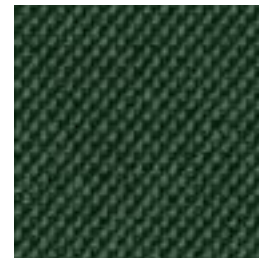
Anthracite  
417



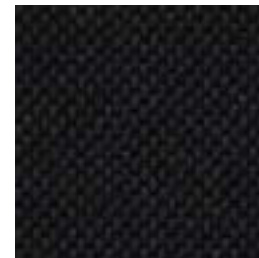
Cherry Lacquer  
419



Truffle  
414



Laurel  
423



Onyx  
418

### Specifications

<b>Content</b>	82% post-consumer recycled biodegradable* polyester including ocean waste 18% biodegradable* polyester
<b>Weight</b>	16.4 ± 1.0 oz./lin. yd
<b>Width</b>	54" min. useable
<b>Repeat</b>	none

### Cleaning Code

Standard Care Label W-S. Clean with water based cleaning agents, foam or pure, water free solvents. Vacuuming or light brushing is recommended to prevent dust and soil buildup. May also be disinfected with hydrogen peroxide, alcohol, and quaternary ammonium (quat) based cleaners.

### Miscellaneous

- Application testing of this product is recommended.
- Colors may vary between dye lots.
- This is a directional fabric.

**Proudly woven in North America supporting our local communities.**

### Sustainability

#### OCEAN WASTE CLEAN IMPACT TEXTILES®

For every pound of fabric produced, up to half a pound of marine waste is removed from the ocean.

### SEAQUAL INITIATIVE

By partnering with the SEAQUAL INITIATIVE, we transform ocean waste into amazing textiles.

#### BIODEGRADABLE\* CLEAN IMPACT TEXTILES®

address the daunting problem of how to deal with polyester fabric at the end of its useful life.

Biodegradable\* in landfill after 1,278 days (tested under ASTM D5511)

\*Rate and extent of biodegradation into elements found in nature is 91% after 1,278 days under ASTM D5511 (Anaerobic Biodegradation of Plastic Materials Under High Solids Anaerobic Digestion Conditions). The test was done with the same component (PET) polyester and biocatalyst additive. No evidence of further degradation.

Duvaltex is an official and authorized advertiser of SEAQUAL® YARN, the SEAQUAL INITIATIVE and their related trademarks, under licence agreement. Only SEAQUAL licensees are permitted to publicly advertise details about SEAQUAL trademarks.

### Performance

**Colorfastness to light (AATCC 16.3 Option 3)**  
Grade 4 min. at 40 hours

**Colorfastness to crocking (AATCC 8)**  
Grade 4 min. dry & Grade 4 min. wet

**Breaking Strength (ASTM D5034)**  
373 lbf min. warp and 328 lbf min. fill

**Seam Slippage (ASTM D4034)**  
115 lbf min. warp and 103 lbf min. fill

**Pilling Resistance (ASTM D3511)**  
Class 4 min.

**Flammability**  
CA Technical Bulletin 117-2013 Section 1  
NFPA 260-2013 Class I  
ASTM E84 Class I or A

**Abrasion (ASTM D4157)**  
100,000 double rubs min. cotton duck

### Acoustical Performance

Our acoustic fabrics are all acoustically transparent. This represents the amount of sound that passes through the fabric.

**Acoustic Transparency:** 90%

For more detailed results, please consult our website.

**This pattern is included in the underwriters laboratory panel fabric recognition program. Additional testing of this U.L. recognized fabric is not required on approved panels from participating manufacturers.**

\*Certification Marks owned by the Association for Contract Textiles, Inc.

CLEAN IMPACT **TEXTILES**

duvaltex

duvaltex

USA & INTERNATIONAL | T 800-544-0200  
CANADA | T 418 227-9897  
For samples, visit [duvaltex.com](http://duvaltex.com)

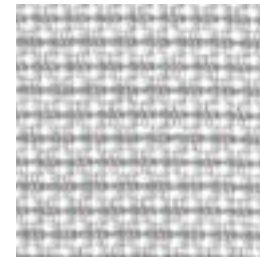
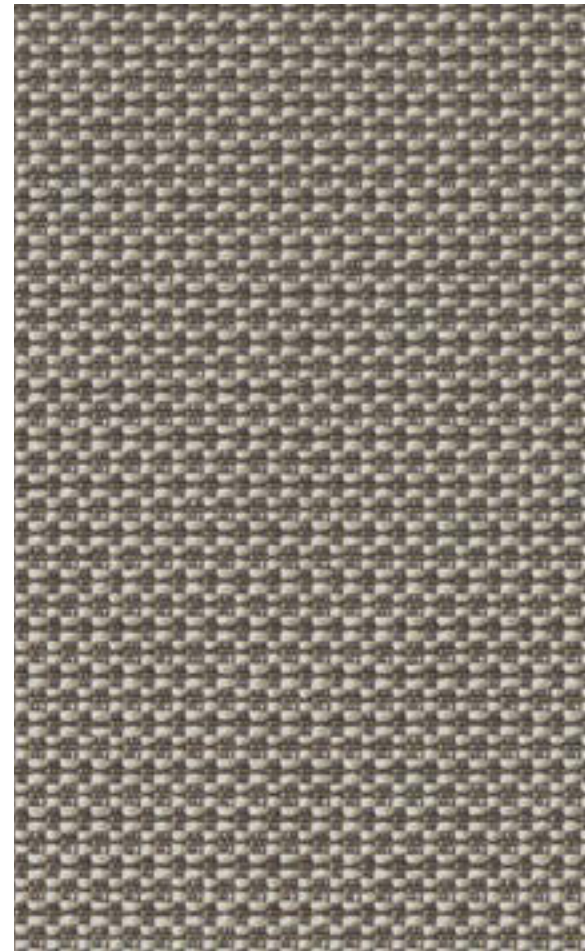


FC-2195 24/09

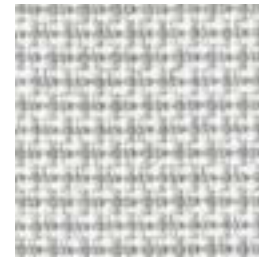
Recycled Content  
Bleach Cleanable

Panel | Acoustic

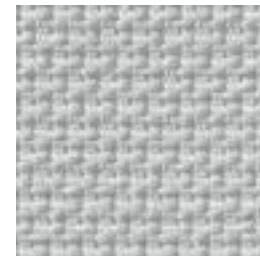
# Intermix 3035



Seagull  
7030



Swan  
7020



Rocket Ship  
7010



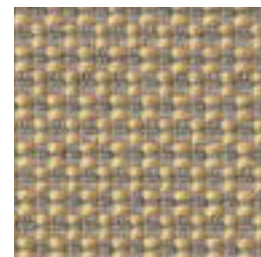
Foggy  
7041



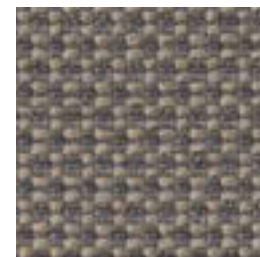
Neptune  
7040



Coconut  
7011



Butter Rum  
7050



Smoky Quartz  
7061

# Intermix 3035

Panel | Acoustic

## Specifications

<b>Content</b>	100% pre-consumer recycled polyester
<b>Weight</b>	15.3 ± 1.0 oz./lin. yd
<b>Width</b>	66" min. useable
<b>Repeat</b>	none
<b>Treatment</b>	polyester binder
<b>Tackable</b>	yes

## Cleaning Code

Standard Care Label W-S. Clean with water based cleaning agents, foam or pure, water free solvents. Vacuuming or light brushing is recommended to prevent dust and soil buildup.

**Bleach Cleanable** - May be cleaned with a 10% bleach-to-water solution. Rinse well after cleaning. May also be disinfected with hydrogen peroxide, alcohol, and quaternary ammonium (quat) based cleaners.

## Miscellaneous

- Application testing of this product is recommended.
- Colors may vary between dye lots.
- This is a directional fabric.
- Tackable properties may vary depending on fabric structure and recovery characteristics.

**Proudly woven in North America supporting our local communities.**

## Sustainability

100% recycled and recyclable



## Performance

- Colorfastness to light (AATCC 16.3 Option 3)**  
Grade 4 min. at 40 hours
- Colorfastness to crocking (AATCC 8)**  
Grade 4 min. dry & Grade 3 min. wet
- Breaking Strength (ASTM D5034)**  
225 lbf min. warp and fill
- Flammability**  
ASTM E84 Class I or A

## Acoustical Performance

Our acoustic fabrics are all acoustically transparent. This represents the amount of sound that passes through the fabric.

**Acoustic Transparency:** 95%

For more detailed results, please consult our website.

This pattern is included in the underwriters laboratory panel fabric recognition program. Additional testing of this U.L. recognized fabric is not required on approved panels from participating manufacturers.

\*Certification Marks owned by the Association for Contract Textiles, Inc.

duvaltex

duvaltex

USA & INTERNATIONAL | T 800-544-0200  
CANADA | T 418 227-9897  
For samples, visit [duvaltex.com](http://duvaltex.com)



FC-3035 25/12

C0 Stain Repellent

Seating | Panel | Acoustic

# Intuition 4856



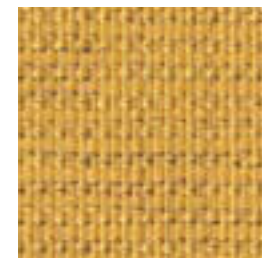
Sand  
1713



Bisque  
1711



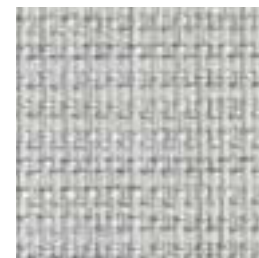
Coral  
1714



Honey  
1716



Viridian  
1723



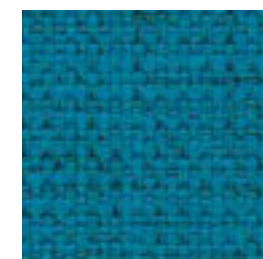
Platinum  
1717



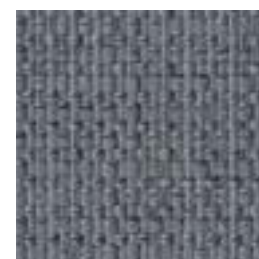
Ochre  
1718



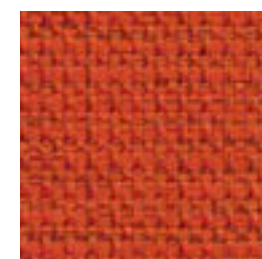
Sage  
1721



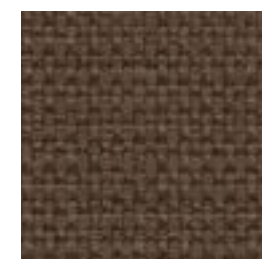
Peacock  
1722



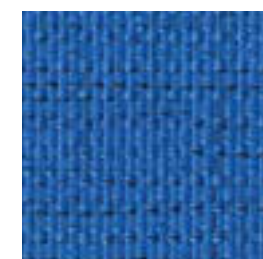
Slate  
1719



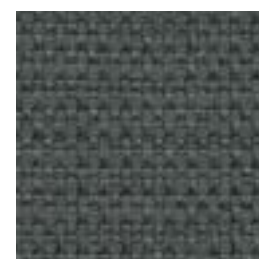
Scarlet  
1720



Hickory  
1715



Admiral  
1724



Charcoal  
1712

duvaltex

# Intuition 4856

Seating | Panel | Acoustic

## Specifications

<b>Content</b>	55% post-consumer recycled polyester 34% pre-consumer recycled polyester 11% polyester
<b>Weight</b>	11.9 ± 1.0 oz./lin. yd
<b>Width</b>	54" min. useable
<b>Repeat</b>	none
<b>Backing</b>	acrylic backcoating
<b>Treatment</b>	C0 stain repellent
<b>Tackable</b>	yes

## Cleaning Code

Standard Care Label W-S. Clean with water based cleaning agents, foam or pure, water free solvents. Vacuuming or light brushing is recommended to prevent dust and soil buildup. May also be disinfected with hydrogen peroxide, alcohol, and quaternary ammonium (quat) based cleaners.

## Miscellaneous

- Application testing of this product is recommended.
- Colors may vary between dye lots.
- This is a directional fabric.
- Tackable properties may vary depending on fabric structure and recovery characteristics.

Proudly woven in North America supporting our local communities.

## Sustainability



duvaltex

## Performance

- Colorfastness to light (AATCC 16.3 Option 3)**  
Grade 4 min. at 40 hours
- Colorfastness to crocking (AATCC 8)**  
Grade 4 min. dry & Grade 3 min. wet
- Breaking Strength (ASTM D5034)**  
210 lbf warp and 200 lbf fill
- Seam Slippage (ASTM D4034)**  
30 lbf warp and 45 lbf fill
- Pilling Resistance (ASTM D3511)**  
Class 4 min.
- Flammability**  
CA Technical Bulletin 117-2013 Section 1  
ASTM E84 Class I or A
- Abrasion (ASTM D4157)**  
100,000 double rubs cotton duck

## Acoustical Performance

Our acoustic fabrics are all acoustically transparent. This represents the amount of sound that passes through the fabric.

**Acoustic Transparency:** 95%

For more detailed results, please consult our website.

This pattern is included in the underwriters laboratory panel fabric recognition program. Additional testing of this U.L. recognized fabric is not required on approved panels from participating manufacturers.

\*Certification Marks owned by the Association for Contract Textiles, Inc.

USA & INTERNATIONAL | T 800-544-0200  
CANADA | T 418 227-9897  
For samples, visit [duvaltex.com](http://duvaltex.com)

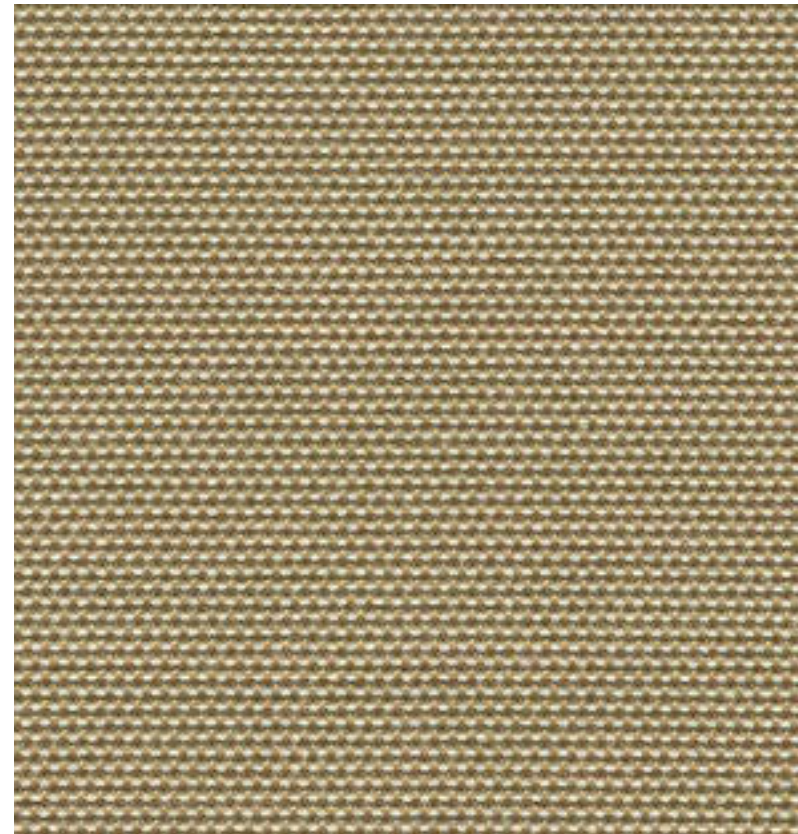


FC-4856 25/10

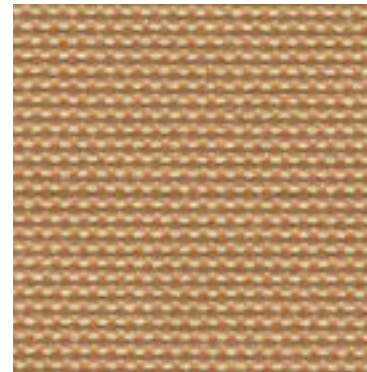
Recycled Content  
Bleach Cleanable  
C0 Stain Repellent

Seating | Panel | Acoustic

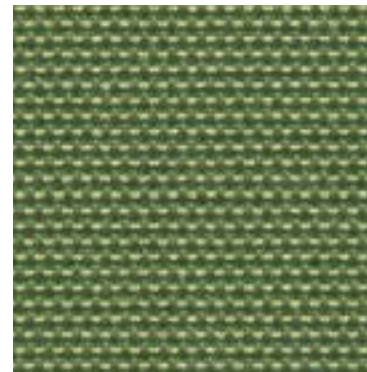
# Jane 9085



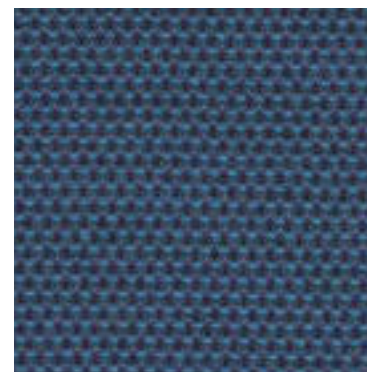
Natural  
4061



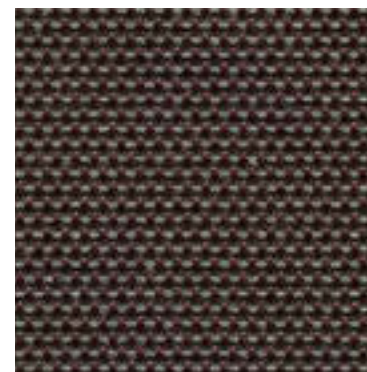
Gold  
4020



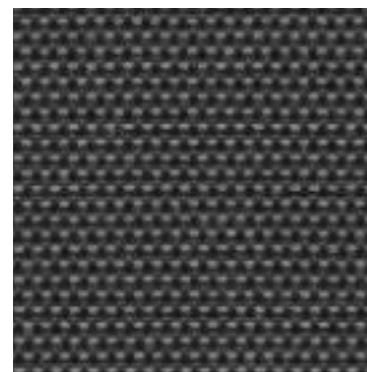
Chive  
4070



Blueberry  
4091



Steel  
4100



Jet  
4040

duvaltex

# Jane 9085

Seating | Panel | Acoustic

## Specifications

<b>Content</b>	100% pre-consumer recycled polyester
<b>Weight</b>	9.7 ± 0.5 oz./lin. yd
<b>Width</b>	54" min. useable
<b>Repeat</b>	none
<b>Treatment</b>	C0 stain repellent
<b>Tackable</b>	yes

## Cleaning Code

Standard Care Label W-S. Clean with water based cleaning agents, foam or pure, water free solvents. Vacuuming or light brushing is recommended to prevent dust and soil buildup.

**Bleach Cleanable** - May be cleaned with a 10% bleach-to-water solution. Rinse well after cleaning. May also be disinfected with hydrogen peroxide, alcohol, and quaternary ammonium (quat) based cleaners.

## Miscellaneous

- Application testing of this product is recommended.
- Colors may vary between dye lots.
- This is a directional fabric.
- Tackable properties may vary depending on fabric structure and recovery characteristics.

**Proudly woven in North America supporting our local communities.**

## Sustainability

100% recycled and recyclable



duvaltex

## Performance

**Colorfastness to light (AATCC 16.3 Option 3)**  
Grade 4 min. at 40 hours

**Colorfastness to crocking (AATCC 8)**  
Grade 4 min. dry & Grade 3 min. wet

**Breaking Strength (ASTM D5034)**  
200 lbf min. warp and 130 lbf min. fill

**Seam Slippage (ASTM D4034)**  
50 lbf min. warp and fill

**Pilling Resistance (ASTM D3511)**  
Class 4 min.

**Flammability**  
CA Technical Bulletin 117-2013 Section 1  
ASTM E84 Class I or A

**Abrasion (ASTM D4157)**  
50,000 double rubs min. cotton duck

## Acoustical Performance

Our acoustic fabrics are all acoustically transparent. This represents the amount of sound that passes through the fabric.

**Acoustic Transparency:** 90%

For more detailed results, please consult our website.

This pattern is included in the underwriters laboratory panel fabric recognition program. Additional testing of this U.L. recognized fabric is not required on approved panels from participating manufacturers.

\*Certification Marks owned by the Association for Contract Textiles, Inc.

USA & INTERNATIONAL | T 800-544-0200  
CANADA | T 418 227-9897  
For samples, visit [duvaltex.com](http://duvaltex.com)



FC-9085 25/12

Recycled Content

Panel | Acoustic

# Lido 2858



Oak Bluffs  
024



Hermosa  
010



Smith Point  
031



Newport  
030



Yellowstone  
067



Bryce Canyon  
065



Heartland  
064



Cape May  
023



Balboa  
019



Huron  
055



Napa Valley  
062

# Lido 2858

Panel | Acoustic

## Specifications

<b>Content</b>	52% pre-consumer recycled polyester 48% post-consumer recycled polyester
<b>Weight</b>	11.5 ± 1.0 oz./lin. yd
<b>Width</b>	66" min. useable
<b>Repeat</b>	none
<b>Tackable</b>	yes

## Cleaning Code

Standard Care Label W-S. Clean with water based cleaning agents, foam or pure, water free solvents. Vacuuming or light brushing is recommended to prevent dust and soil buildup. May also be disinfected with hydrogen peroxide, alcohol, and quaternary ammonium (quat) based cleaners.

## Miscellaneous

- Application testing of this product is recommended.
- Colors may vary between dye lots.
- This is a directional fabric.
- Tackable properties may vary depending on fabric structure and recovery characteristics.

**Proudly woven in North America supporting our local communities.**

## Sustainability

100% recycled and recyclable



Renowned for its exceptional performance and style, Guilford of Maine has set industry standards in acoustics and panel fabrics for many decades. We present the Guilford of Maine Collection - a selection of timeless fabrics.

## Performance

- Colorfastness to light (AATCC 16.3 Option 3)**  
Grade 4 min. at 40 hours
- Colorfastness to crocking (AATCC 8)**  
Grade 4 min. dry & Grade 3 min. wet
- Breaking Strength (ASTM D5034)**  
100 lbf min. warp and 125 lbf min. fill
- Flammability**  
ASTM E84 Class I or A

## Acoustical Performance

Our acoustic fabrics are all acoustically transparent. This represents the amount of sound that passes through the fabric.

**Acoustic Transparency:** 95%

For more detailed results, please consult our website.

This pattern is included in the underwriters laboratory panel fabric recognition program. Additional testing of this U.L. recognized fabric is not required on approved panels from participating manufacturers.

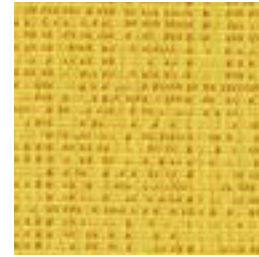
\*Certification Marks owned by the Association for Contract Textiles, Inc.



## Marin 1300



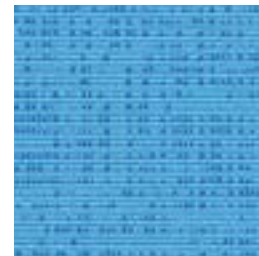
Dolphin  
1147



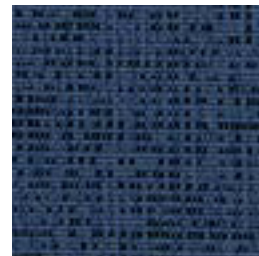
Sunfish  
1153



Mangrove  
1154



Swell  
1155



Benthic  
1157



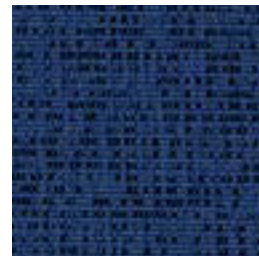
Great White  
1143



Ice Edge  
1145



Clownfish  
1152



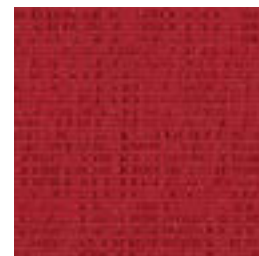
Intertidal  
1156



Tusk  
1144



Sea Glass  
1146



Red Snapper  
1151



Carrageen  
1150



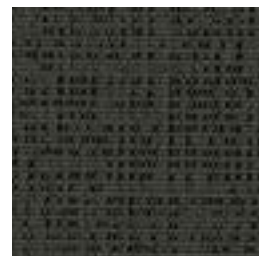
Sand  
1142



Pelican  
1141



Grey Whale  
1148



Blacktip  
1149

### Specifications

<b>Content</b>	90% post-consumer recycled polyester including ocean waste 10% polyester
<b>Weight</b>	12.5 ± 1.0 oz./lin. yd
<b>Width</b>	67" min. useable
<b>Repeat</b>	19.1" vertical   12.76" horizontal
<b>Tackable</b>	yes

### Cleaning Code

Standard Care Label W-S. Clean with water based cleaning agents, foam or pure, water free solvents. Vacuuming or light brushing is recommended to prevent dust and soil buildup. May also be disinfected with hydrogen peroxide, alcohol, and quaternary ammonium (quat) based cleaners.

### Miscellaneous

- Application testing of this product is recommended.
- Colors may vary between dye lots.
- This is a directional fabric.
- Tackable properties may vary depending on fabric structure and recovery characteristics.

**Proudly woven in North America supporting our local communities.**

### Sustainability

**OCEAN WASTE CLEAN IMPACT TEXTILES®**  
For every pound of fabric produced, up to half a pound of marine waste is removed from the ocean.

### SEAQUAL INITIATIVE

By partnering with the SEAQUAL INITIATIVE, we transform ocean waste into amazing textiles.

Duvaltex is an official and authorized advertiser of SEAQUAL® YARN, the SEAQUAL INITIATIVE and their related trademarks, under licence agreement. Only SEAQUAL licensees are permitted to publicly advertise details about SEAQUAL trademarks.

### Performance

- Colorfastness to light (AATCC 16.3 Option 3)**  
Grade 4 min. at 40 hours
- Colorfastness to crocking (AATCC 8)**  
Grade 4 min. dry & Grade 3 min. wet
- Breaking Strength (ASTM D5034)**  
245 lbf min. warp and 170 lbf min. fill
- Flammability**  
ASTM E84 Class I or A

### Acoustical Performance

Our acoustic fabrics are all acoustically transparent. This represents the amount of sound that passes through the fabric.

**Acoustic Transparency:** 90%

For more detailed results, please consult our website.

This pattern is included in the underwriters laboratory panel fabric recognition program. Additional testing of this U.L. recognized fabric is not required on approved panels from participating manufacturers.

\*Certification Marks owned by the Association for Contract Textiles, Inc.



Biodegradable\*  
Bleach Cleanable

Seating | Panel | Acoustic

# Marlstone 2194



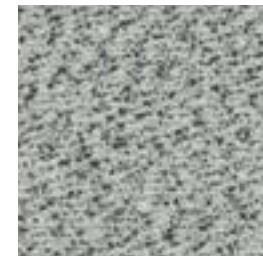
Silica  
902



Calcite  
901



Glow  
903



Seasalt  
921



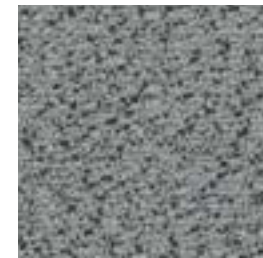
Reed Flower  
904



Mineral Blue  
907



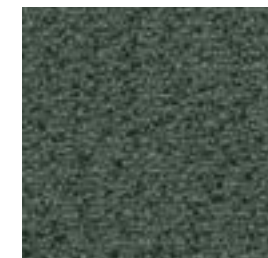
Cinder  
923



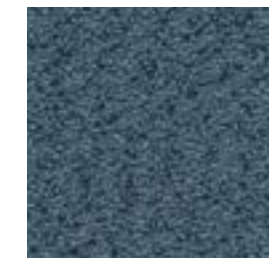
Flint  
922



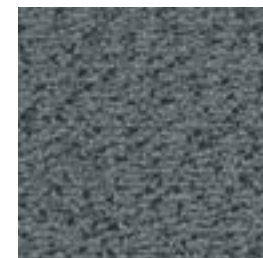
Nut  
905



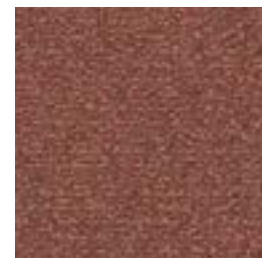
Arboreal  
930



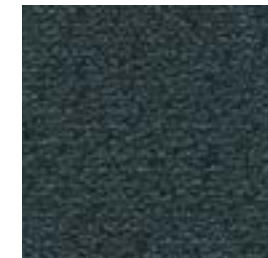
Slate Blue  
927



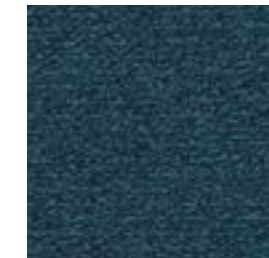
Granite  
924



Rose Stone  
906



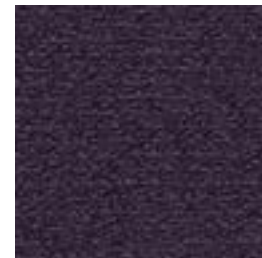
Lava Rock  
925



Fjord  
928



Peat  
926



Amethyst  
929

CLEAN IMPACT TEXTILES®

duvaltex

# Marlstone 2194

CLEAN IMPACT TEXTILES®

## Specifications

<b>Content</b>	100% post-consumer recycled biodegradable* polyester
<b>Weight</b>	13.4 ± 1.0 oz./lin. yd
<b>Width</b>	54" min. useable
<b>Repeat</b>	none
<b>Tackable</b>	yes

## Cleaning Code

Standard Care Label W-S. Clean with water based cleaning agents, foam or pure, water free solvents. Vacuuming or light brushing is recommended to prevent dust and soil buildup.

**Bleach Cleanable** - May be cleaned with a 10% bleach-to-water solution. Rinse well after cleaning. May also be disinfected with hydrogen peroxide, alcohol, and quaternary ammonium (quat) based cleaners.

## Miscellaneous

- Application testing of this product is recommended.
- Colors may vary between dye lots.
- This is a directional fabric.
- Tackable properties may vary depending on fabric structure and recovery characteristics.

**Proudly woven in North America supporting our local communities.**


## Sustainability


**BIODEGRADABLE\* CLEAN IMPACT TEXTILES®** address the daunting problem of how to deal with polyester fabric at the end of its useful life.

Biodegradable\* in landfill after 1,278 days (tested under ASTM D5511)

\*Rate and extent of biodegradation into elements found in nature is 91% after 1,278 days under ASTM D5511 (Anaerobic Biodegradation of Plastic Materials Under High Solids Anaerobic Digestion Conditions). The test was done with the same component (PET) polyester and biocatalyst additive. No evidence of further degradation.

## Performance

 **Colorfastness to light (AATCC 16.3 Option 3)**  
Grade 4 min. at 40 hours

 **Colorfastness to crocking (AATCC 8)**  
Grade 4 min. dry & Grade 4 min. wet

**Breaking Strength (ASTM D5034)**  
319 lbf min. warp and 363 lbf min. fill

 **Seam Slippage (ASTM D4034)**  
121 lbf min. warp and 102 lbf min. fill

**Pilling Resistance (ASTM D3511)**  
Class 4 min.

**Flammability**  
CA Technical Bulletin 117-2013 Section I  
NFPA 260-2013 Class I  
ASTM E84 Class I or A


 **A\* Abrasion (ASTM D4157)**  
100,000 double rubs min. cotton duck

## Acoustical Performance

Our acoustic fabrics are all acoustically transparent. This represents the amount of sound that passes through the fabric.

**Acoustic Transparency:** 90%

For more detailed results, please consult our website.

 **This pattern is included in the underwriters laboratory panel fabric recognition program. Additional testing of this U.L. recognized fabric is not required on approved panels from participating manufacturers.**

\*Certification Marks owned by the Association for Contract Textiles, Inc.

USA & INTERNATIONAL | T 800-544-0200  
CANADA | T 418 227-9897  
For samples, visit [duvaltex.com](http://duvaltex.com)

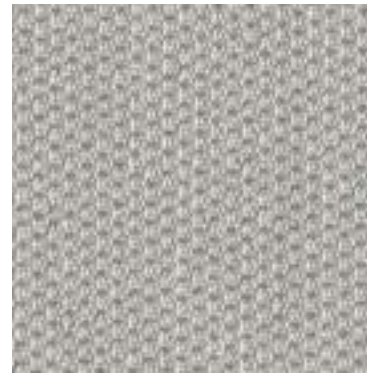


FC-2194 25/12

# Metallation 5118



Chrome  
1676



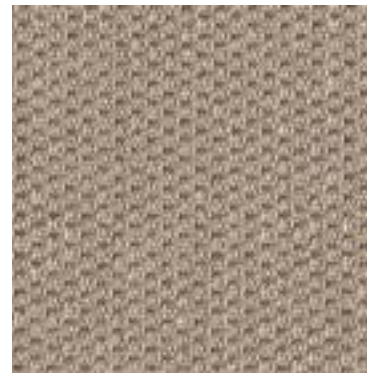
Stainless  
1625



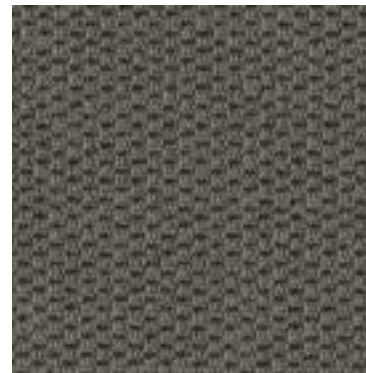
Polished Pewter  
1678



Etched Bronze  
1623



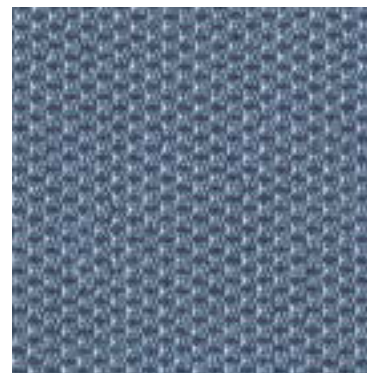
Welded Steel  
1677



Dark Annealed  
1629



18 Karat  
1627



Fired Titanium  
1633



Stove Pipe  
1628

# Metallation 5118

## Specifications

<b>Content</b>	56% post-consumer recycled polyester 44% polyester
<b>Weight</b>	15.2 ± 0.5 oz./lin. yd
<b>Width</b>	66" min. useable
<b>Repeat</b>	none
<b>Tackable</b>	yes

## Cleaning Code

Standard Care Label W-S. Clean with water based cleaning agents, foam or pure, water free solvents. Vacuuming or light brushing is recommended to prevent dust and soil buildup. May also be disinfected with hydrogen peroxide, alcohol, and quaternary ammonium (quat) based cleaners.

## Miscellaneous

- Application testing of this product is recommended.
- Colors may vary between dye lots.
- This is a directional fabric.
- Tackable properties may vary depending on fabric structure and recovery characteristics.

**Proudly woven in North America supporting our local communities.**

## Performance

- Colorfastness to light (AATCC 16.3 Option 3)**  
Grade 4 min. at 40 hours
- Colorfastness to crocking (AATCC 8)**  
Grade 4 min. dry & Grade 3 min. wet
- Breaking Strength (ASTM D5034)**  
150 lbf min. warp and fill
- Flammability**  
ASTM E84 Class I or A

## Acoustical Performance

Our acoustic fabrics are all acoustically transparent. This represents the amount of sound that passes through the fabric.

**Acoustic Transparency:** 95%

For more detailed results, please consult our website.

This pattern is included in the underwriters laboratory panel fabric recognition program. Additional testing of this U.L. recognized fabric is not required on approved panels from participating manufacturers.

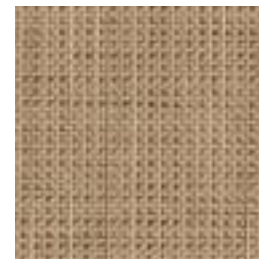
\*Certification Marks owned by the Association for Contract Textiles, Inc.



# Off the Grid 1233



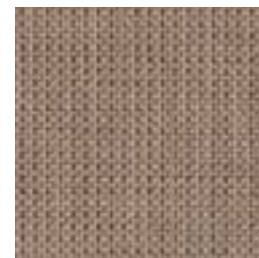
Steam  
1307



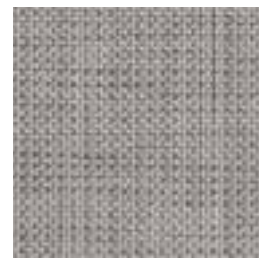
Woodchip  
1301



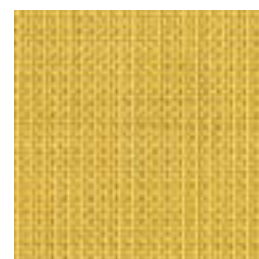
Thermal  
1306



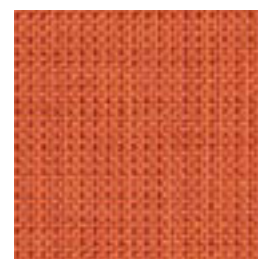
Fossil  
1304



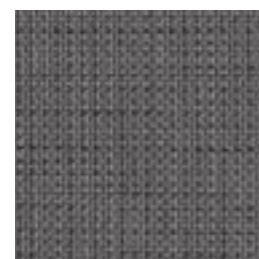
Lava  
1305



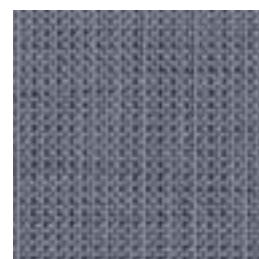
Solar  
1313



Earthglow  
1309



Coal  
1302



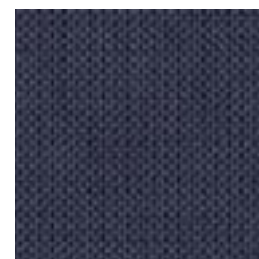
Hydro  
1303



Flora  
1312



Flame  
1310



Tidal  
1311

# Off the Grid 1233

## Specifications

<b>Content</b>	49% pre-consumer recycled polyester 38% post-consumer recycled polyester 13% polyester
<b>Weight</b>	10.0 ± 1.0 oz./lin. yd
<b>Width</b>	66" min. useable
<b>Repeat</b>	none
<b>Treatment</b>	polyester binder
<b>Tackable</b>	yes

## Cleaning Code

Standard Care Label W-S. Clean with water based cleaning agents, foam or pure, water free solvents. Vacuuming or light brushing is recommended to prevent dust and soil buildup. May also be disinfected with hydrogen peroxide, alcohol, and quaternary ammonium (quat) based cleaners.

## Miscellaneous

- Application testing of this product is recommended.
- Colors may vary between dye lots.
- This is a directional fabric.
- Tackable properties may vary depending on fabric structure and recovery characteristics.

**Proudly woven in North America supporting our local communities.**

## Sustainability



## Performance

- Colorfastness to light (AATCC 16.3 Option 3)**  
Grade 4 min. at 40 hours
- Colorfastness to crocking (AATCC 8)**  
Grade 4 min. dry & Grade 3 min. wet
- Breaking Strength (ASTM D5034)**  
185 lbf warp and 165 lbf fill
- Flammability**  
ASTM E84 Class I or A

## Acoustical Performance

Our acoustic fabrics are all acoustically transparent. This represents the amount of sound that passes through the fabric.

**Acoustic Transparency:** 100%

For more detailed results, please consult our website.

This pattern is included in the underwriters laboratory panel fabric recognition program. Additional testing of this U.L. recognized fabric is not required on approved panels from participating manufacturers.

\*Certification Marks owned by the Association for Contract Textiles, Inc.



Available with  
and without Crypton\*

Seating | Panel | Acoustic

# Palette 2155



Acorn  
1137



Cutch  
1135



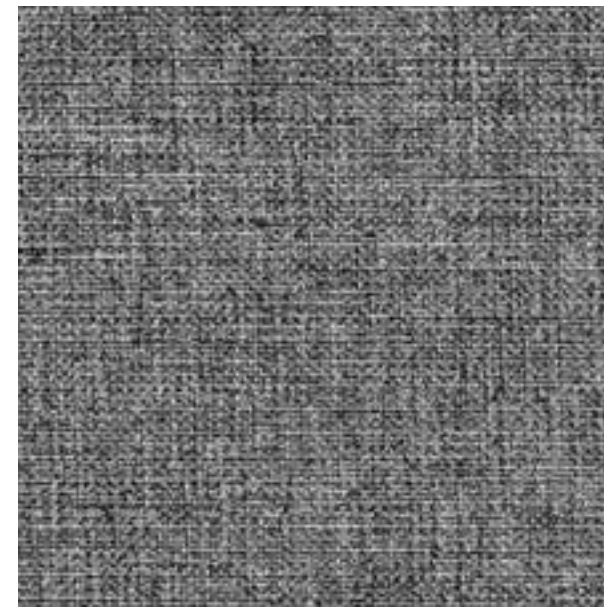
Chamomile  
1131



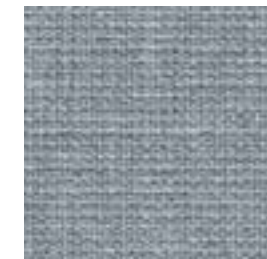
Alder  
1136



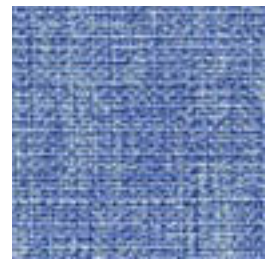
Artichoke  
1145



Birch Bark  
1133



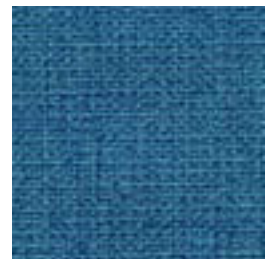
Alkanet  
1132



Cornflower  
1151



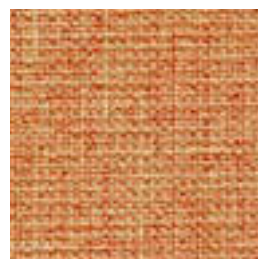
Lichen  
1149



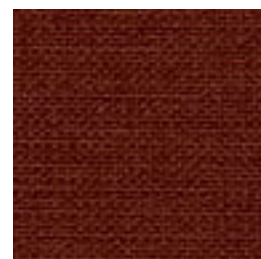
Saxon Blue  
1150



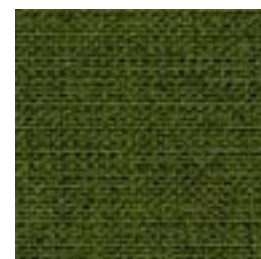
Sunflower  
1144



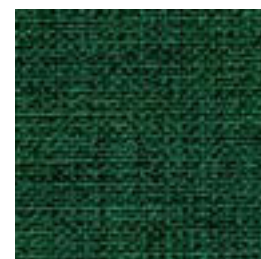
Sandalwood  
1143



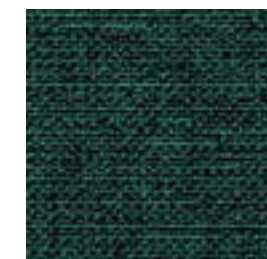
Annatto  
1142



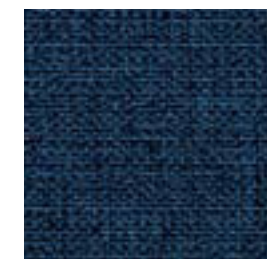
Sorrel  
1146



Spinach  
1147



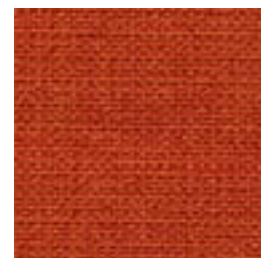
Nettle  
1148



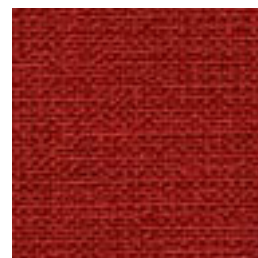
Indigo  
1152



Knotweed  
1153



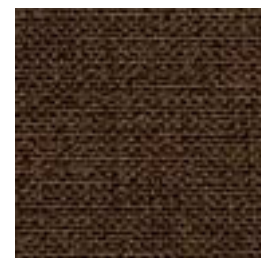
Paprika  
1141



Sumac  
1140



Murex  
1139



Walnut  
1138



Iron  
1134



Logwood  
1154

# Palette 2155

Seating | Panel | Acoustic

Available with and without Crypton\*

\*to order with Crypton add a "C" to the color number

## Specifications

<b>Content</b>	100% polyester
<b>Weight</b>	12 ± 1.0 oz./lin. yd
<b>Width</b>	54" min. useable
<b>Repeat</b>	none
<b>Backing</b>	Crypton moisture barrier
<b>Treatment</b>	Crypton odor resistance
<b>Tackable</b>	yes

## How to order Palette with Crypton

When ordering with Crypton add a "C" to the color number. ex.: 2155-1137C Acorn = with Crypton

Specifications and performance available on request.

## Cleaning Code

Standard Care Label W-S. Clean with water based cleaning agents, foam or pure, water free solvents. Vacuuming or light brushing is recommended to prevent dust and soil buildup. May also be disinfected with hydrogen peroxide, alcohol, and quaternary ammonium (quat) based cleaners.

## Miscellaneous


- Application testing of this product is recommended.
- Colors may vary between dye lots.
- This is a directional fabric.
- Tackable properties may vary depending on fabric structure and recovery characteristics.

**Proudly woven in North America supporting our local communities.**

## Sustainability




## Performance


 **Colorfastness to light (AATCC 16.3 Option 3)**  
Grade 4 min. at 40 hours

 **Colorfastness to crocking (AATCC 8)**  
Grade 4 min. dry & Grade 3 min. wet

**Breaking Strength (ASTM D5034)**  
295 lbf min. warp and 280 lbf fill

 **Seam Slippage (ASTM D4034)**  
85 lbf min. warp and 75 lbf fill

**Pilling Resistance (ASTM D3511)**  
Class 4 min.

 **Flammability**  
CA Technical Bulletin 117-2013 Section 1  
ASTM E84 Class I or A


 **\* Abrasion (ASTM D4157)**  
100,000 double rubs min. cotton duck

## Acoustical Performance

Our acoustic fabrics are all acoustically transparent. This represents the amount of sound that passes through the fabric.

**Acoustic Transparency:** 90%

For more detailed results, please consult our website.

 This pattern is included in the underwriters laboratory panel fabric recognition program. Additional testing of this U.L. recognized fabric is not required on approved panels from participating manufacturers.

\*Certification Marks owned by the Association for Contract Textiles, Inc.

duvaltex

USA & INTERNATIONAL | T 800-544-0200  
CANADA | T 418 227-9897

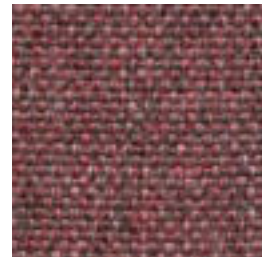
For samples, visit [duvaltex.com](https://www.duvaltex.com)



FC-2155 25/08

# Poseidon 1306

## Poseidon 1306



Coralline  
1294



Sea Spray  
1290



Triggerfish  
1281



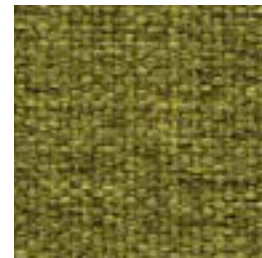
Sargassum  
1296



Red Algae  
1285



Surf  
1289



Ecosystem  
1286



Beachrock  
1295



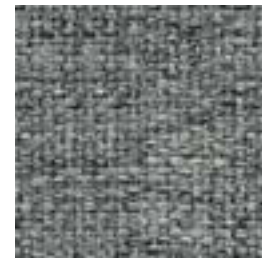
Brittle Star  
1284



Aquatic  
1291



Kelp Forest  
1287



Narwhal  
1298



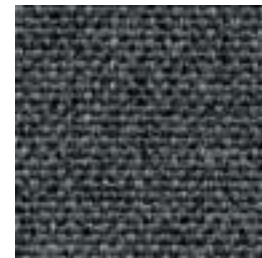
King Crab  
1282



Sailfish  
1292



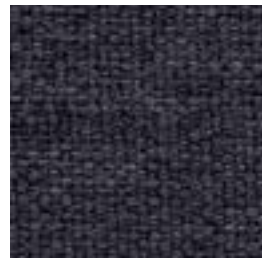
Tidepool  
1288



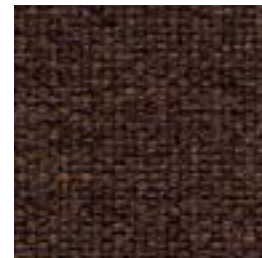
Manatee  
1299



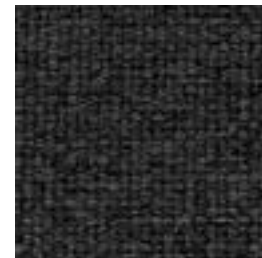
Archipelago  
1283



Deep Blue  
1293



Java Sea  
1297



Orca  
1300

### Specifications

<b>Content</b>	90% post-consumer recycled polyester including ocean waste 10% polyester
<b>Weight</b>	18 ± 1.0 oz./lin. yd
<b>Width</b>	54" min. useable
<b>Repeat</b>	none
<b>Tackable</b>	yes

### Cleaning Code

Standard Care Label W-S. Clean with water based cleaning agents, foam or pure, water free solvents. Vacuuming or light brushing is recommended to prevent dust and soil buildup. May also be disinfected with hydrogen peroxide, alcohol, and quaternary ammonium (quat) based cleaners.

### Miscellaneous

- Application testing of this product is recommended.
- Colors may vary between dye lots.
- This is a directional fabric.
- Tackable properties may vary depending on fabric structure and recovery characteristics.

Proudly woven in North America supporting our local communities.

### Sustainability

**OCEAN WASTE CLEAN IMPACT TEXTILES™**  
For every pound of fabric produced, up to half a pound of marine waste is removed from the ocean.

### SEAQUAL INITIATIVE

By partnering with the SEAQUAL INITIATIVE, we transform ocean waste into amazing textiles.

Duvaltex is an official and authorized advertiser of SEAQUAL® YARN, the SEAQUAL INITIATIVE and their related trademarks, under licence agreement. Only SEAQUAL licensees are permitted to publicly advertise details about SEAQUAL trademarks.

### Performance

- Colorfastness to light (AATCC 16.3 Option 3)**  
Grade 4 min. at 40 hours
- Colorfastness to crocking (AATCC 8)**  
Grade 4 min. dry & Grade 4 min. wet
- Breaking Strength (ASTM D5034)**  
480 lbf min. warp and 360 lbf min. fill
- Seam Slippage (ASTM D4034)**  
105 lbf min. warp and 78 lbf min. fill
- Pilling Resistance (ASTM D3511)**  
Class 4 min.
- Flammability**  
CA Technical Bulletin 117-2013 Section 1  
NFPA 260-2013 Class I  
ASTM E84 Class I or A
- Abrasion (ASTM D4157)**  
100,000 double rubs min. cotton duck

### Acoustical Performance

Our acoustic fabrics are all acoustically transparent. This represents the amount of sound that passes through the fabric.

**Acoustic Transparency:** 90%

For more detailed results, please consult our website.

This pattern is included in the underwriters laboratory panel fabric recognition program. Additional testing of this U.L. recognized fabric is not required on approved panels from participating manufacturers.

\*Certification Marks owned by the Association for Contract Textiles, Inc.



Biodegradable\*  
Recycled Content

Panel | Acoustic

# Purpose 1302

# Purpose 1302

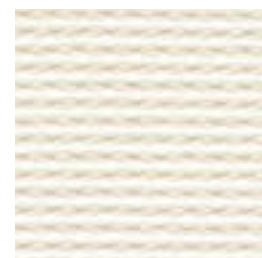
CLEAN IMPACT **TEXTILES**



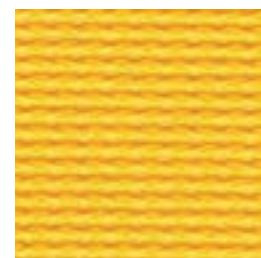
Wish  
1184



Intend  
1185



Hope  
1183



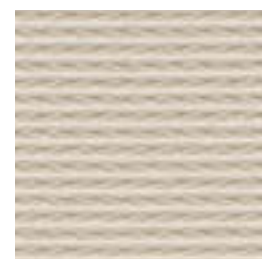
Strive  
1189



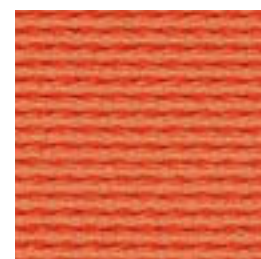
Mission  
1190



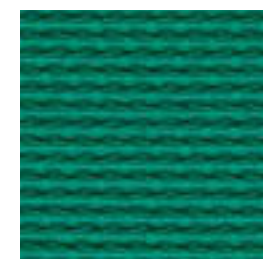
Ambition  
1186



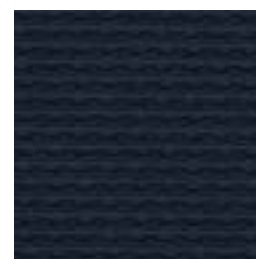
Idea  
1182



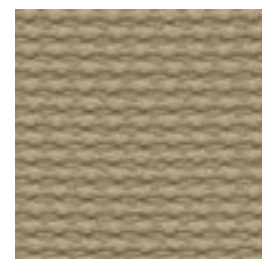
Target  
1188



Direction  
1191



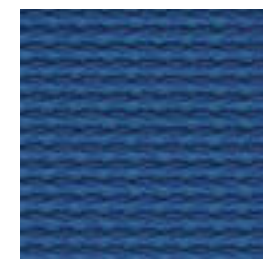
Objective  
1193



Plan  
1181



Desire  
1187



Focus  
1192



Reason  
1194

## Specifications

<b>Content</b>	100% post-consumer recycled biodegradable* polyester
<b>Weight</b>	14.1 ± 1.0 oz./lin. yd
<b>Width</b>	67" min. useable
<b>Repeat</b>	none

## Cleaning Code

Standard Care Label W-S. Clean with water based cleaning agents, foam or pure, water free solvents. Vacuuming or light brushing is recommended to prevent dust and soil buildup. May also be disinfected with hydrogen peroxide, alcohol, and quaternary ammonium (quat) based cleaners.

## Miscellaneous

- Application testing of this product is recommended.
- Colors may vary between dye lots.
- This is a directional fabric.

**Proudly woven in North America supporting our local communities.**

## Sustainability

### BIODEGRADABLE\* CLEAN IMPACT TEXTILES®

address the daunting problem of how to deal with polyester fabric at the end of its useful life.

Biodegradable\* in landfill after 1,278 days (tested under ASTM D5511)

\*Rate and extent of biodegradation into elements found in nature is 91% after 1,278 days under ASTM D5511 (Anaerobic Biodegradation of Plastic Materials Under High Solids Anaerobic Digestion Conditions). The test was done with the same component (PET) polyester and biocatalyst additive. No evidence of further degradation.

## Performance

- Colorfastness to light (AATCC 16.3 Option 3)**  
Grade 4 min. at 40 hours
- Colorfastness to crocking (AATCC 8)**  
Grade 4 min. dry & Grade 3 min. wet
- Breaking Strength (ASTM D5034)**  
205 lbf min. warp and 215 lbf min. fill
- Flammability**  
ASTM E84 Class I or A

## Acoustical Performance

Our acoustic fabrics are all acoustically transparent. This represents the amount of sound that passes through the fabric.

**Acoustic Transparency:** 95%

For more detailed results, please consult our website.

This pattern is included in the underwriters laboratory panel fabric recognition program. Additional testing of this U.L. recognized fabric is not required on approved panels from participating manufacturers.

\*Certification Marks owned by the Association for Contract Textiles, Inc.



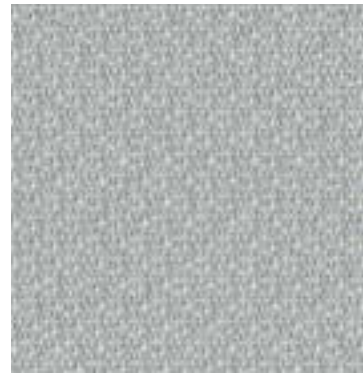
Recycled Content  
Bleach Cleanable

Panel | Acoustic

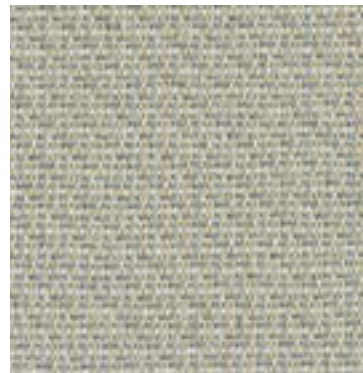
# Pursuit 3034



White Linen  
7040



Whisper  
7010



Mist Grey  
7051



Dove  
7011



Cement  
7030



Elephant  
7031

# Pursuit 3034

Panel | Acoustic

## Specifications

Content	100% pre-consumer recycled polyester
Weight	9.1 ± 0.5 oz./lin. yd
Width	66" min. useable
Repeat	none
Treatment	polyester binder
Tackable	yes

## Cleaning Code

Standard Care Label W-S. Clean with water based cleaning agents, foam or pure, water free solvents. Vacuuming or light brushing is recommended to prevent dust and soil buildup.

**Bleach Cleanable** - May be cleaned with a 10% bleach-to-water solution. Rinse well after cleaning. May also be disinfected with hydrogen peroxide, alcohol, and quaternary ammonium (quat) based cleaners.

## Miscellaneous

- Application testing of this product is recommended.
- Colors may vary between dye lots.
- This is a directional fabric.
- Tackable properties may vary depending on fabric structure and recovery characteristics.

**Proudly woven in North America supporting our local communities.**

## Sustainability

100% recycled and recyclable



## Performance

- Colorfastness to light (AATCC 16.3 Option 3)**  
Grade 4 min. at 40 hours
- Colorfastness to crocking (AATCC 8)**  
Grade 4 min. dry & Grade 3 min. wet
- Breaking Strength (ASTM D5034)**  
125 lbf min. warp and 100 lbf min. fill
- Flammability**  
ASTM E84 Class I or A

## Acoustical Performance

Our acoustic fabrics are all acoustically transparent. This represents the amount of sound that passes through the fabric.

**Acoustic Transparency:** 100%

For more detailed results, please consult our website.

This pattern is included in the underwriters laboratory panel fabric recognition program. Additional testing of this U.L. recognized fabric is not required on approved panels from participating manufacturers.

\*Certification Marks owned by the Association for Contract Textiles, Inc.

duvaltex

duvaltex

USA & INTERNATIONAL | T 800-544-0200  
CANADA | T 418 227-9897  
For samples, visit [duvaltex.com](https://www.duvaltex.com)



FC-3034 25/09

Seating | Panel | Acoustic

# Quadrille 4701



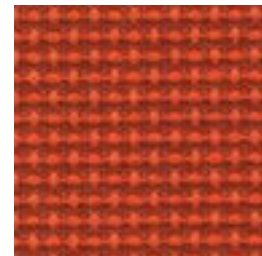
Gambol  
1003



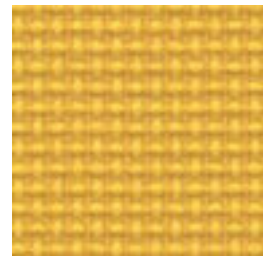
Cabaret  
1002



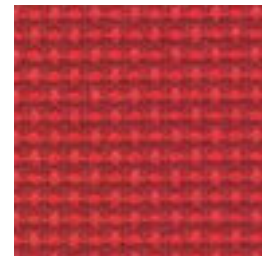
Fair  
1001



Fiesta  
1008



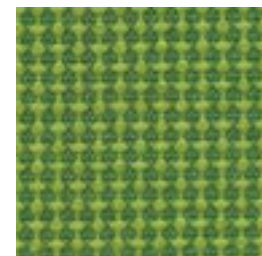
Zest  
1007



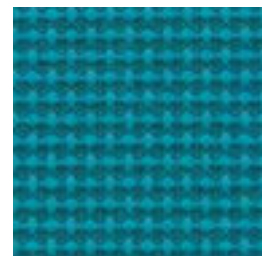
Carnival  
1009



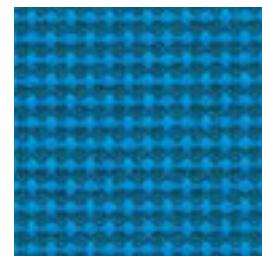
Jubilee  
1011



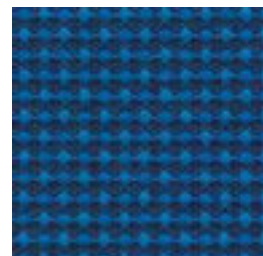
Spring  
1006



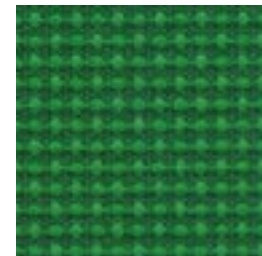
Escapade  
1016



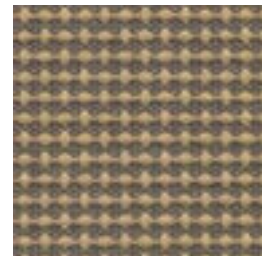
Revelry  
1015



Soiree  
1014



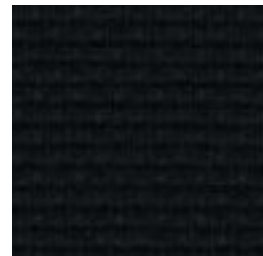
Shenanigan  
1017



Regalia  
1005



Opus  
1012



Masquerade  
1013

duvaltx

# Quadrille 4701

Seating | Panel | Acoustic

## Specifications

<b>Content</b>	53% polyester 47% pre-consumer recycled polyester
<b>Weight</b>	12.1 ± 1.0 oz./lin. yd
<b>Width</b>	54" min. useable
<b>Repeat</b>	none
<b>Tackable</b>	yes

## Cleaning Code

Standard Care Label W-S. Clean with water based cleaning agents, foam or pure, water free solvents. Vacuuming or light brushing is recommended to prevent dust and soil buildup. May also be disinfected with hydrogen peroxide, alcohol, and quaternary ammonium (quat) based cleaners.

## Miscellaneous

- Application testing of this product is recommended.
- Colors may vary between dye lots.
- This is a directional fabric.
- Tackable properties may vary depending on fabric structure and recovery characteristic

**Proudly woven in North America supporting our local communities.**

## Sustainability



## Performance

- Colorfastness to light (AATCC 16.3 Option 3)**  
Grade 4 min. at 40 hours
- Colorfastness to crocking (AATCC 8)**  
Grade 4 min. dry & Grade 3 min. wet
- Breaking Strength (ASTM D5034)**  
245 lbf warp and 270 lbf fill
- Seam Slippage (ASTM D4034)**  
70 lbf warp and 90 lbf fill
- Pilling Resistance (ASTM D3511)**  
Class 4 min.
- Flammability**  
CA Technical Bulletin 117-2013 Section 1  
ASTM E84 Class I or A
- Abrasion (ASTM D4157)**  
100,000 double rubs cotton duck

## Acoustical Performance

Our acoustic fabrics are all acoustically transparent. This represents the amount of sound that passes through the fabric.

**Acoustic Transparency:** 90%

For more detailed results, please consult our website.

This pattern is included in the underwriters laboratory panel fabric recognition program. Additional testing of this U.L. recognized fabric is not required on approved panels from participating manufacturers.

\*Certification Marks owned by the Association for Contract Textiles, Inc.

duvaltx

USA & INTERNATIONAL | T 800-544-0200  
CANADA | T 418 227-9897  
For samples, visit [x.com">duvaltx.com](http://duvalt<span style=)



FC-1300 25/08

Recycled Content

Panel | Acoustic

# Reeds 3078



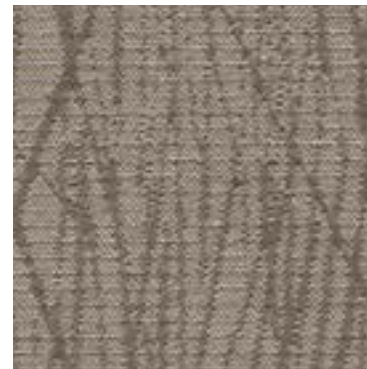
Greystone  
020



Bisque  
010



Iron  
030



Mink  
050

# Reeds 3078

Panel | Acoustic

## Specifications

<b>Content</b>	74% post-consumer recycled polyester 26% pre-consumer recycled polyester
<b>Weight</b>	11.6 ± 1.0 oz./lin. yd
<b>Width</b>	66" min. useable
<b>Repeat</b>	12.5" vertical   16.9" horizontal

## Cleaning Code

Standard Care Label W-S. Clean with water based cleaning agents, foam or pure, water free solvents. Vacuuming or light brushing is recommended to prevent dust and soil buildup. May also be disinfected with hydrogen peroxide, alcohol, and quaternary ammonium (quat) based cleaners.

## Miscellaneous

- Application testing of this product is recommended.
- Colors may vary between dye lots.
- This is a directional fabric.

**Proudly woven in North America supporting our local communities.**

## Sustainability

100% recycled and recyclable



## Performance

- Colorfastness to light (AATCC 16.3 Option 3)**  
Grade 4 min. at 40 hours
- Colorfastness to crocking (AATCC 8)**  
Grade 4 min. dry & Grade 3 min. wet
- Breaking Strength (ASTM D5034)**  
250 lbf min. warp and 150 lbf min. fill
- Flammability**  
ASTM E84 Class I or A

## Acoustical Performance

Our acoustic fabrics are all acoustically transparent. This represents the amount of sound that passes through the fabric.

**Acoustic Transparency:** 90%

For more detailed results, please consult our website.

This pattern is included in the underwriters laboratory panel fabric recognition program. Additional testing of this U.L. recognized fabric is not required on approved panels from participating manufacturers.

\*Certification Marks owned by the Association for Contract Textiles, Inc.

Biodegradable\*  
Recycled Content  
Bleach Cleanable

Panel | Acoustic

# Resolve 1301

# Resolve 1301

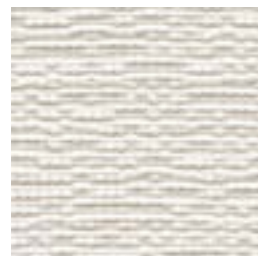
CLEAN IMPACT **TEXTILES**



Zeal  
1207



Courage  
1201



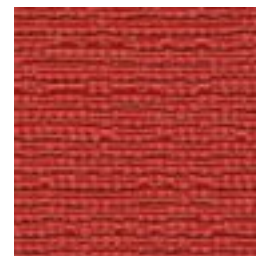
Clarify  
1202



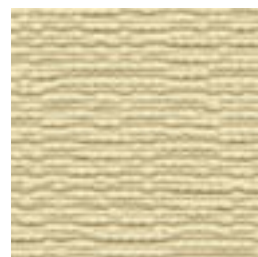
Effect  
1203



Manage  
1204



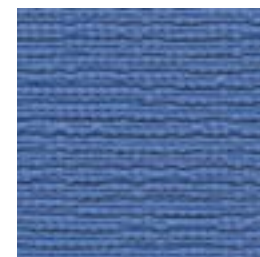
Bold  
1199



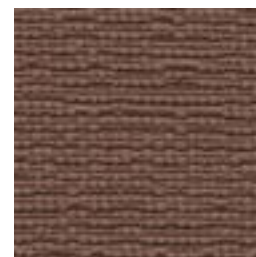
Earnest  
1194



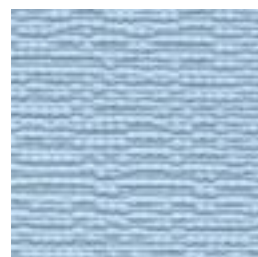
Decide  
1195



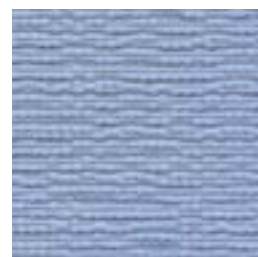
Plan  
1198



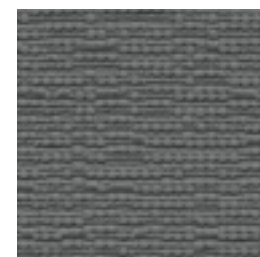
Explain  
1200



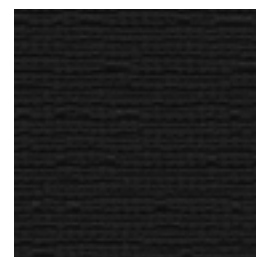
Intention  
1196



Attain  
1197



Fortitude  
1205



Conclude  
1206

† Suitable for printing

## Specifications

<b>Content</b>	100% post-consumer recycled biodegradable* polyester
<b>Weight</b>	16.1 ± 1.0 oz./lin. yd
<b>Width</b>	67" min. useable
<b>Repeat</b>	32" vertical   12.7" horizontal

## Cleaning Code

Standard Care Label W-S. Clean with water based cleaning agents, foam or pure, water free solvents. Vacuuming or light brushing is recommended to prevent dust and soil buildup.

**Bleach Cleanable** - May be cleaned with a 10% bleach-to-water solution. Rinse well after cleaning. May also be disinfected with hydrogen peroxide, alcohol, and quaternary ammonium (quat) based cleaners.

## Miscellaneous

- Application testing of this product is recommended.
- Colors may vary between dye lots.
- This is a directional fabric.

**Proudly woven in North America supporting our local communities.**

## Sustainability

**BIODEGRADABLE\* CLEAN IMPACT TEXTILES®** address the daunting problem of how to deal with polyester fabric at the end of its useful life.

Biodegradable\* in landfill after 1,278 days (tested under ASTM D5511)

\*Rate and extent of biodegradation into elements found in nature is 91% after 1,278 days under ASTM D5511 (Anaerobic Biodegradation of Plastic Materials Under High Solids Anaerobic Digestion Conditions). The test was done with the same component (PET) polyester and biocatalyst additive. No evidence of further degradation.

## Performance

- Colorfastness to light (AATCC 16.3 Option 3)**  
Grade 4 min. at 40 hours
- Colorfastness to crocking (AATCC 8)**  
Grade 4 min. dry & Grade 3 min. wet
- Breaking Strength (ASTM D5034)**  
315 lbf min. warp and 405 lbf min. fill
- Flammability**  
ASTM E84 Class I or A

## Acoustical Performance

Our acoustic fabrics are all acoustically transparent. This represents the amount of sound that passes through the fabric.

**Acoustic Transparency:** 90%

For more detailed results, please consult our website.

This pattern is included in the underwriters laboratory panel fabric recognition program. Additional testing of this U.L. recognized fabric is not required on approved panels from participating manufacturers.

\*Certification Marks owned by the Association for Contract Textiles, Inc.

CLEAN IMPACT **TEXTILES**

duvaltex

duvaltex

USA & INTERNATIONAL | T 800-544-0200  
CANADA | T 418 227-9897  
For samples, visit [duvaltex.com](http://duvaltex.com)



FC-1301 25/07

Recycled Content

Panel | Acoustic

# Spinel 3582



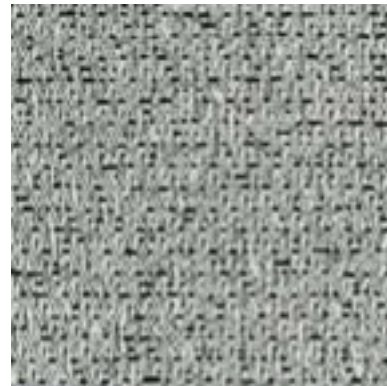
Alabaster  
058



Opal  
011



Sandstone  
050



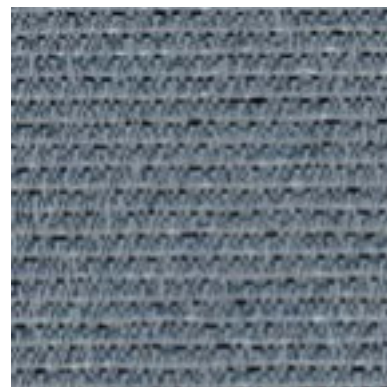
Petoskey  
056



Perlite  
080



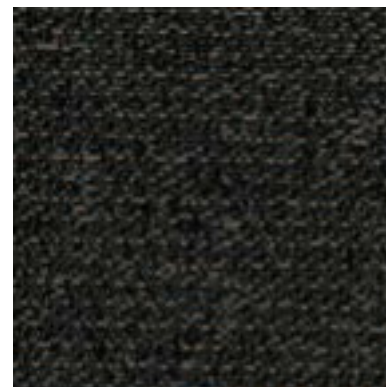
Tiger Eye  
030



Quarry  
091



Slate  
130



Obsidian  
021

# Spinel 3582

Panel | Acoustic

## Specifications

<b>Content</b>	68% pre-consumer recycled polyester 32% post-consumer recycled polyester
<b>Weight</b>	11.8 ± 1.0 oz./lin. yd
<b>Width</b>	66" min. useable
<b>Repeat</b>	16.5" vertical and horizontal
<b>Tackable</b>	yes

## Cleaning Code

Standard Care Label W-S. Clean with water based cleaning agents, foam or pure, water free solvents. Vacuuming or light brushing is recommended to prevent dust and soil buildup. May also be disinfected with hydrogen peroxide, alcohol, and quaternary ammonium (quat) based cleaners.

## Miscellaneous

- Application testing of this product is recommended.
- Colors may vary between dye lots.
- This is a directional fabric.
- Tackable properties may vary depending on fabric structure and recovery characteristics.

**Proudly woven in North America supporting our local communities.**





100% recycled and recyclable

## Sustainability



Renowned for its exceptional performance and style, Guilford of Maine has set industry standards in acoustics and panel fabrics for many decades. We present the Guilford of Maine Collection - a selection of timeless fabrics.

## Performance


-  **Colorfastness to light (AATCC 16.3 Option 3)**  
Grade 4 min. at 40 hours
-  **Colorfastness to crocking (AATCC 8)**  
Grade 4 min. dry & Grade 3 min. wet
-  **Breaking Strength (ASTM D5034)**  
220 lbf min. warp and 90 lbf min. fill
-  **Flammability**  
ASTM E84 Class I or A

## Acoustical Performance

Our acoustic fabrics are all acoustically transparent. This represents the amount of sound that passes through the fabric.

**Acoustic Transparency:** 95%

For more detailed results, please consult our website.

 This pattern is included in the underwriters laboratory panel fabric recognition program. Additional testing of this U.L. recognized fabric is not required on approved panels from participating manufacturers.

\*Certification Marks owned by the Association for Contract Textiles, Inc.



Recycled Content  
Bleach Cleanable

Panel | Acoustic

# Sprite 2671



Snow  
7040



Linen  
7010



Powder  
7011



Butter  
7020



Sherbet  
7012



Khaki  
7030



Harvest  
7032



Kiwi  
7031



Sky  
7033

# Sprite 2671

Panel | Acoustic

## Specifications

<b>Content</b>	95% pre-consumer recycled polyester 5% post-consumer recycled polyester
<b>Weight</b>	10.8 ± 0.5 oz./lin. yd
<b>Width</b>	66" min. useable
<b>Repeat</b>	7.25" vertical   14" horizontal
<b>Treatment</b>	polyester binder

## Cleaning Code

Standard Care Label W-S. Clean with water based cleaning agents, foam or pure, water free solvents. Vacuuming or light brushing is recommended to prevent dust and soil buildup.

**Bleach Cleanable** - May be cleaned with a 10% bleach-to-water solution. Rinse well after cleaning. May also be disinfected with hydrogen peroxide, alcohol, and quaternary ammonium (quat) based cleaners.

## Miscellaneous

- Application testing of this product is recommended.
- Colors may vary between dye lots.
- This is a directional fabric.

**Proudly woven in North America supporting our local communities.**





## Sustainability

100% recycled and recyclable



Renowned for its exceptional performance and style, Guilford of Maine has set industry standards in acoustics and panel fabrics for many decades. We present the Guilford of Maine Collection - a selection of timeless fabrics.

## Performance


-  **Colorfastness to light (AATCC 16.3 Option 3)**  
Grade 4 min. at 40 hours
-  **Colorfastness to crocking (AATCC 8)**  
Grade 4 min. dry & Grade 3 min. wet
-  **Breaking Strength (ASTM D5034)**  
175 lbf min. warp and fill
-  **Flammability**  
ASTM E84 Class I or A

## Acoustical Performance

Our acoustic fabrics are all acoustically transparent. This represents the amount of sound that passes through the fabric.

**Acoustic Transparency:** 95%

For more detailed results, please consult our website.

 This pattern is included in the underwriters laboratory panel fabric recognition program. Additional testing of this U.L. recognized fabric is not required on approved panels from participating manufacturers.

\*Certification Marks owned by the Association for Contract Textiles, Inc.



Recycled Content

Panel | Acoustic

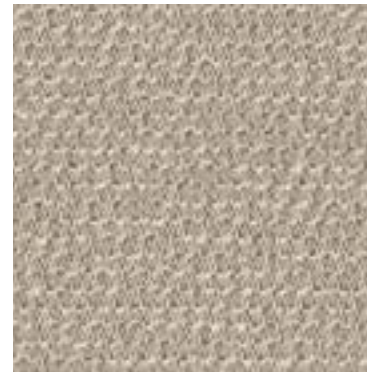
# Strata 2968

Panel | Acoustic

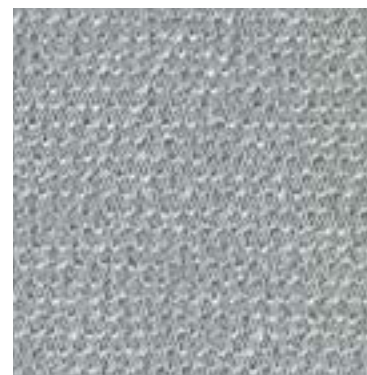
## Strata 2968



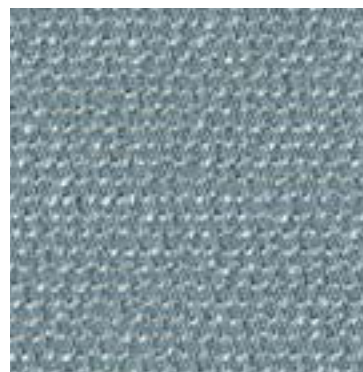
Linen  
010



Sand  
030



Cloud  
040



Sky  
050



Sea  
070

### Specifications

<b>Content</b>	100% pre-consumer recycled polyester
<b>Weight</b>	11.8 ± 1.0 oz./lin. yd
<b>Width</b>	66" min. useable
<b>Repeat</b>	.1" vertical   none horizontal
<b>Tackable</b>	yes

### Cleaning Code

Standard Care Label W-S. Clean with water based cleaning agents, foam or pure, water free solvents. Vacuuming or light brushing is recommended to prevent dust and soil buildup. May also be disinfected with hydrogen peroxide, alcohol, and quaternary ammonium (quat) based cleaners.

### Miscellaneous

- Application testing of this product is recommended.
- Colors may vary between dye lots.
- This is a directional fabric.
- Tackable properties may vary depending on fabric structure and recovery characteristics.

**Proudly woven in North America supporting our local communities.**

### Sustainability

100% recycled and recyclable



Renowned for its exceptional performance and style, Guilford of Maine has set industry standards in acoustics and panel fabrics for many decades. We present the Guilford of Maine Collection - a selection of timeless fabrics.

### Performance

- Colorfastness to light (AATCC 16.3 Option 3)**  
Grade 4 min. at 40 hours
- Colorfastness to crocking (AATCC 8)**  
Grade 4 min. dry & Grade 3 min. wet
- Breaking Strength (ASTM D5034)**  
200 lbf min. warp and 100 lbf. fill
- Flammability**  
ASTM E84 Class I or A

### Acoustical Performance

Our acoustic fabrics are all acoustically transparent. This represents the amount of sound that passes through the fabric.

**Acoustic Transparency:** 95%

For more detailed results, please consult our website.

This pattern is included in the underwriters laboratory panel fabric recognition program. Additional testing of this U.L. recognized fabric is not required on approved panels from participating manufacturers.

\*Certification Marks owned by the Association for Contract Textiles, Inc.



Bleach Cleanable

Panel | Acoustic

# Studio 54 1405



Cool Diamond  
110



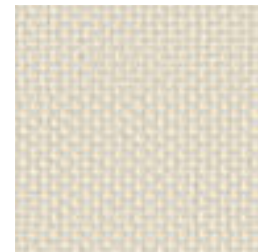
Moonlight  
150



Silver Fawn  
170



Electric Ivory  
111



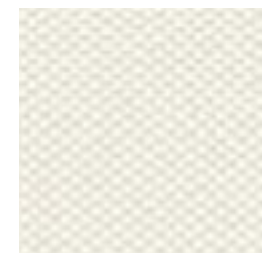
Radiant Yellow  
140



Patina Shine  
131



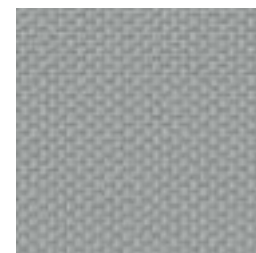
Steel Luster  
172



Stardust  
130



Sequin Gold  
141



Pewter Glow  
171



Polished Slate  
161



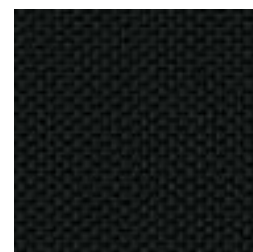
Taupe Sheen  
160



Umber Flash  
162



Twilight Gleam  
120



Black Gloss  
121

# Studio 54 1405

Panel | Acoustic

## Specifications

<b>Content</b>	30% post-consumer recycled polyester 70% polypropylene
<b>Weight</b>	13.1 ± 0.5 oz./lin. yd
<b>Width</b>	66" min. useable
<b>Repeat</b>	none
<b>Treatment</b>	polyester binder
<b>Tackable</b>	yes

## Cleaning Code

Standard Care Label W-S. Clean with water based cleaning agents, foam or pure, water free solvents. Vacuuming or light brushing is recommended to prevent dust and soil buildup.

**Bleach Cleanable** - May be cleaned with a 10% bleach-to-water solution. Rinse well after cleaning. May also be disinfected with hydrogen peroxide, alcohol, and quaternary ammonium (quat) based cleaners.

## Miscellaneous



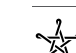

- Application testing of this product is recommended.
- Colors may vary between dye lots.
- Variation in texture and luster, due to the manufacturing process, is to be expected and is part of the inherent beauty of Studio 54.
- Tackable properties may vary depending on fabric structure and recovery characteristics.

**Proudly woven in North America supporting our local communities.**

## **Guilford of Maine** Collection

Renowned for its exceptional performance and style, Guilford of Maine has set industry standards in acoustics and panel fabrics for many decades. We present the Guilford of Maine Collection - a selection of timeless fabrics.

## Performance


-  **Colorfastness to light (AATCC 16.3 Option 3)**  
Grade 4.5 min. at 40 hours
-  **Colorfastness to crocking (AATCC 8)**  
Grade 4.5 min. dry & Grade 4.5 min. wet
-  **Breaking Strength (ASTM D5034)**  
181 lbf min. warp and 192 lbf min. fill
-  **Flammability**  
ASTM E84 Class I or A

## Acoustical Performance

Our acoustic fabrics are all acoustically transparent. This represents the amount of sound that passes through the fabric.

**Acoustic Transparency:** 85%

For more detailed results, please consult our website.

 This pattern is included in the underwriters laboratory panel fabric recognition program. Additional testing of this U.L. recognized fabric is not required on approved panels from participating manufacturers.

Certification Marks owned by the Association for Contract Textiles, Inc.



Recycled Content

Panel | Acoustic

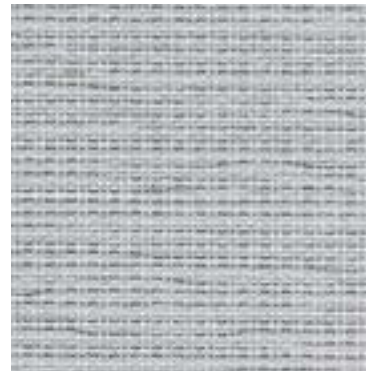
# Tempest 2120



Zebra  
015



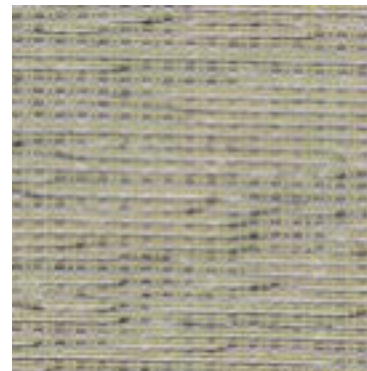
Full Stream  
012



Frost  
031



Gold Rush  
041



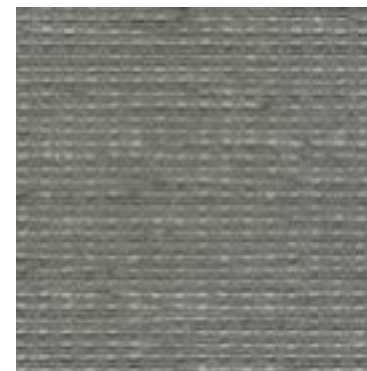
Tumbleweed  
030



Starlight  
023



Dragonfly  
020



Slate  
025

duvaltex

# Tempest 2120

Panel | Acoustic

## Specifications

<b>Content</b>	100% pre-consumer recycled polyester
<b>Weight</b>	11.3 ± 1.0 oz./lin. yd
<b>Width</b>	66" min. useable
<b>Repeat</b>	none
<b>Tackable</b>	yes

## Cleaning Code

Standard Care Label W-S. Clean with water based cleaning agents, foam or pure, water free solvents. Vacuuming or light brushing is recommended to prevent dust and soil buildup. May also be disinfected with hydrogen peroxide, alcohol, and quaternary ammonium (quat) based cleaners.

## Miscellaneous

- Application testing of this product is recommended.
- Colors may vary between dye lots.
- This is a directional fabric.
- Tackable properties may vary depending on fabric structure and recovery characteristics.

**Proudly woven in North America supporting our local communities.**

## Sustainability

100% recycled and recyclable



## Performance

- Colorfastness to light (AATCC 16.3 Option 3)**  
Grade 4 min. at 40 hours
- Colorfastness to crocking (AATCC 8)**  
Grade 4 min. dry & Grade 3 min. wet
- Breaking Strength (ASTM D5034)**  
180 lbf min. warp and 160 lbf fill
- Flammability**  
ASTM E84 Class I or A

## Acoustical Performance

Our acoustic fabrics are all acoustically transparent. This represents the amount of sound that passes through the fabric.

**Acoustic Transparency:** 95%

For more detailed results, please consult our website.

This pattern is included in the underwriters laboratory panel fabric recognition program. Additional testing of this U.L. recognized fabric is not required on approved panels from participating manufacturers.

\*Certification Marks owned by the Association for Contract Textiles, Inc.

duvaltex

USA & INTERNATIONAL | T 800-544-0200  
CANADA | T 418 227-9897  
For samples, visit [duvaltex.com](https://www.duvaltex.com)

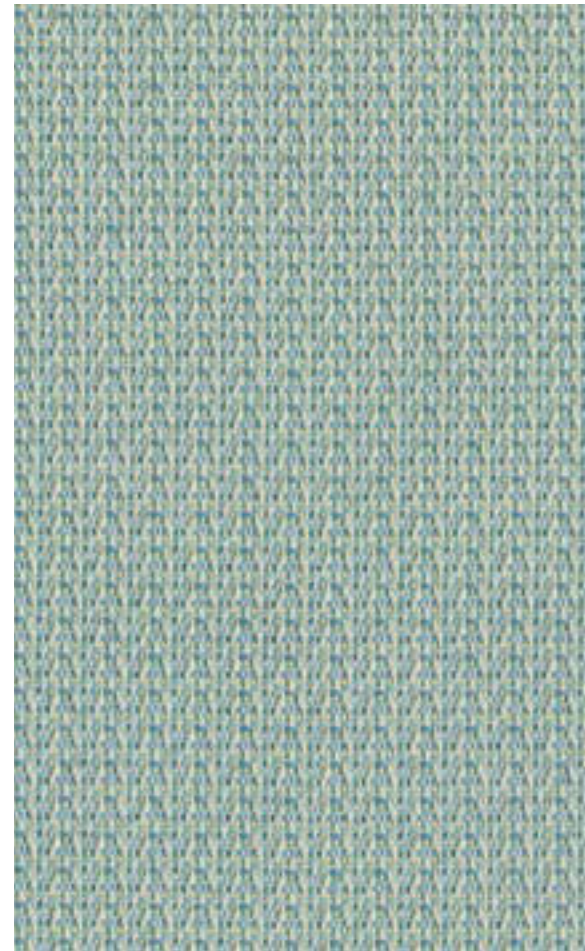


FC-2120 25/12

Recycled Content  
Bleach Cleanable

Panel | Acoustic

# Theory 3006



Marina  
050



Cotton  
040



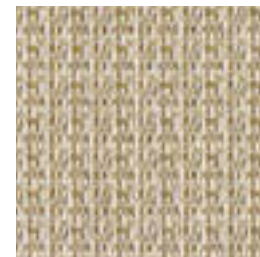
Citrus  
021



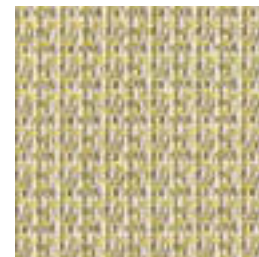
Bisque  
033



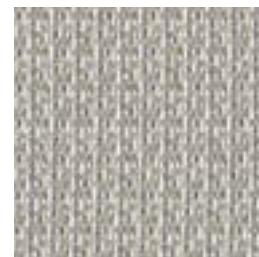
Spice  
020



Camel  
032



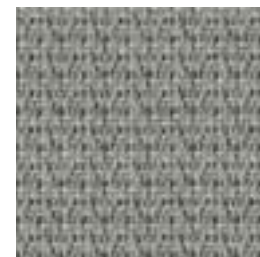
Chive  
030



Pewter  
031



Truffle  
012



Shadow  
010



Lagoon  
011

duvaltex

# Theory 3006

Panel | Acoustic

## Specifications

<b>Content</b>	100% pre-consumer recycled polyester
<b>Weight</b>	10.8 ± 1.0 oz./lin. yd
<b>Width</b>	66" min. useable
<b>Repeat</b>	none
<b>Tackable</b>	yes

## Cleaning Code

Standard Care Label W-S. Clean with water based cleaning agents, foam or pure, water free solvents. Vacuuming or light brushing is recommended to prevent dust and soil buildup.

**Bleach Cleanable** - May be cleaned with a 10% bleach-to-water solution. Rinse well after cleaning. May also be disinfected with hydrogen peroxide, alcohol, and quaternary ammonium (quat) based cleaners.

## Miscellaneous

- Application testing of this product is recommended.
- Colors may vary between dye lots.
- This is a directional fabric.
- Tackable properties may vary depending on fabric structure and recovery characteristics.

**Proudly woven in North America supporting our local communities.**

## Sustainability

100% recycled and recyclable



## Performance

- Colorfastness to light (AATCC 16.3 Option 3)**  
Grade 4 min. at 40 hours
- Colorfastness to crocking (AATCC 8)**  
Grade 4 min. dry & Grade 3 min. wet
- Breaking Strength (ASTM D5034)**  
175 lbf min. warp and 150 lbf min. fill
- Flammability**  
ASTM E84 Class I or A

## Acoustical Performance

Our acoustic fabrics are all acoustically transparent. This represents the amount of sound that passes through the fabric.

**Acoustic Transparency:** 100%

For more detailed results, please consult our website.

This pattern is included in the underwriters laboratory panel fabric recognition program. Additional testing of this U.L. recognized fabric is not required on approved panels from participating manufacturers.

\*Certification Marks owned by the Association for Contract Textiles, Inc.

duvaltex

USA & INTERNATIONAL | T 800-544-0200  
CANADA | T 418 227-9897  
For samples, visit [duvaltex.com](https://www.duvaltex.com)



FC-3006 25/08

Ocean Waste  
Biodegradable\*

Seating | Panel | Acoustic

# Tidal 2180

CLEAN IMPACT **TEXTILES**

## Tidal 2180



### Specifications

<b>Content</b>	42% post-consumer recycled biodegradable* polyester including ocean waste 58% post-consumer recycled biodegradable* polyester
<b>Weight</b>	12.5 ± 1.0 oz./lin. yd
<b>Width</b>	54" min. useable
<b>Repeat</b>	none
<b>Tackable</b>	yes

### Cleaning Code

Standard Care Label W-S. Clean with water based cleaning agents, foam or pure, water free solvents. Vacuuming or light brushing is recommended to prevent dust and soil buildup. May also be disinfected with hydrogen peroxide, alcohol, and quaternary ammonium (quat) based cleaners.

### Miscellaneous

- Application testing of this product is recommended.
- Colors may vary between dye lots.
- This is a directional fabric.
- Tackable properties may vary depending on fabric structure and recovery characteristics.

**Proudly woven in North America supporting our local communities.**

### Sustainability

**OCEAN WASTE CLEAN IMPACT TEXTILES®**  
For every pound of fabric produced, up to half a pound of marine waste is removed from the ocean.

### SEAQUAL INITIATIVE

By partnering with the SEAQUAL INITIATIVE, we transform ocean waste into amazing textiles.

**BIODEGRADABLE\* CLEAN IMPACT TEXTILES®** address the daunting problem of how to deal with polyester fabric at the end of its useful life.

Biodegradable\* in landfill after 1,278 days (tested under ASTM D5511)

\*Rate and extent of biodegradation into elements found in nature is 91% after 1,278 days under ASTM D5511 (Anaerobic Biodegradation of Plastic Materials Under High Solids Anaerobic Digestion Conditions). The test was done with the same component (PET) polyester and biocatalyst additive. No evidence of further degradation.

Duvaltex is an official and authorized advertiser of SEAQUAL® YARN, the SEAQUAL INITIATIVE and their related trademarks, under licence agreement. Only SEAQUAL licensees are permitted to publicly advertise details about SEAQUAL trademarks.

### Performance

- Colorfastness to light (AATCC 16.3 Option 3)**  
Grade 4 min. at 40 hours
- Colorfastness to crocking (AATCC 8)**  
Grade 4.5 min. dry & Grade 4.5 min. wet
- Breaking Strength (ASTM D5034)**  
309 lbf min. warp and 238 lbf min. fill
- Seam Slippage (ASTM D4034)**  
115 lbf min. warp and 103 lbf min. fill
- Pilling Resistance (ASTM D3511)**  
Class 4 min.
- Flammability**  
CA Technical Bulletin 117-2013 Section 1  
NFPA 260-2013 Class I  
ASTM E84 Class I or A
- Abrasion (ASTM D4157)**  
75,000 double rubs min. cotton duck

### Acoustical Performance

Our acoustic fabrics are all acoustically transparent. This represents the amount of sound that passes through the fabric.

**Acoustic Transparency:** 90%

For more detailed results, please consult our website.

This pattern is included in the underwriters laboratory panel fabric recognition program. Additional testing of this U.L. recognized fabric is not required on approved panels from participating manufacturers.

\*Certification Marks owned by the Association for Contract Textiles, Inc.

CLEAN IMPACT **TEXTILES**

duvaltex

duvaltex

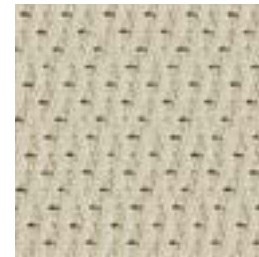
USA & INTERNATIONAL | T 800-544-0200  
CANADA | T 418 227-9897  
For samples, visit [duvaltex.com](http://duvaltex.com)



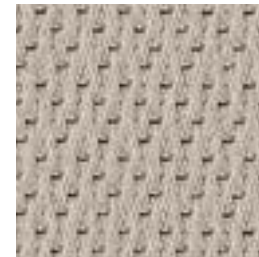
# Tweed 2737



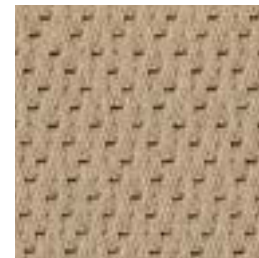
Bleach White  
2766



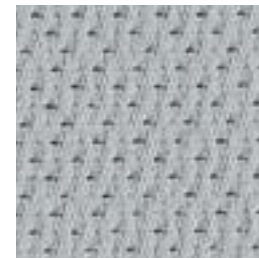
Twinkle  
2168



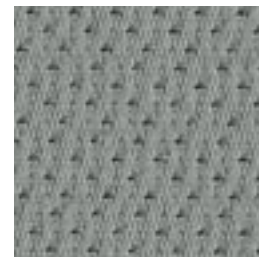
Concrete  
2144



Wheat  
2187



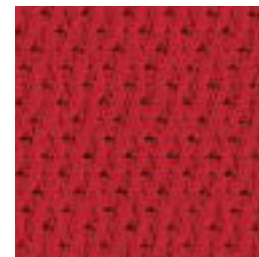
Stainless  
2195



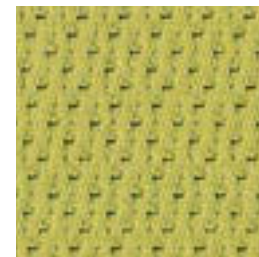
Metal  
2193



Orange  
2767



Lipstick  
2770



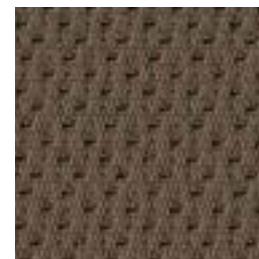
Leaf  
2772



Spa  
2773



Royal Blue  
2771



Java  
2197

# Tweed 2737

## Specifications

<b>Content</b>	75% pre-consumer recycled polyester 25% post-consumer recycled polyester
<b>Weight</b>	11.7 ± 1.0 oz./lin. yd
<b>Width</b>	66" min. useable
<b>Repeat</b>	none
<b>Tackable</b>	yes

## Cleaning Code

Standard Care Label W-S. Clean with water based cleaning agents, foam or pure, water free solvents. Vacuuming or light brushing is recommended to prevent dust and soil buildup. May also be disinfected with hydrogen peroxide, alcohol, and quaternary ammonium (quat) based cleaners.

## Miscellaneous

- Application testing of this product is recommended.
- Colors may vary between dye lots.
- This is a directional fabric.
- Tackable properties may vary depending on fabric structure and recovery characteristics.

**Proudly woven in North America supporting our local communities.**

## Sustainability

100% recycled and recyclable

## Performance

- Colorfastness to light (AATCC 16.3 Option 3)**  
Grade 4 min. at 40 hours
- Colorfastness to crocking (AATCC 8)**  
Grade 4 min. dry & Grade 3 min. wet
- Breaking Strength (ASTM D5034)**  
225 lbf min. warp and 175 lbf fill
- Flammability**  
ASTM E84 Class I or A

## Acoustical Performance

Our acoustic fabrics are all acoustically transparent. This represents the amount of sound that passes through the fabric.

**Acoustic Transparency:** 95%

For more detailed results, please consult our website.

This pattern is included in the underwriters laboratory panel fabric recognition program. Additional testing of this U.L. recognized fabric is not required on approved panels from participating manufacturers.

\*Certification Marks owned by the Association for Contract Textiles, Inc.



# Whisper 1240



̄ Suitable for printing

duvaltex

# Whisper 1240

## Specifications

<b>Content</b>	53% post-consumer recycled polyester 47% polyester
<b>Weight</b>	10.9 ± 1.0 oz./lin. yd
<b>Width</b>	66" min. useable
<b>Repeat</b>	none
<b>Treatment</b>	polyester binder
<b>Tackable</b>	yes

## Cleaning Code

Standard Care Label W-S. Clean with water based cleaning agents, foam or pure, water free solvents. Vacuuming or light brushing is recommended to prevent dust and soil buildup. May also be disinfected with hydrogen peroxide, alcohol, and quaternary ammonium (quat) based cleaners.

## Miscellaneous

- Application testing of this product is recommended.
- Colors may vary between dye lots.
- This is a directional fabric.
- Tackable properties may vary depending on fabric structure and recovery characteristics.

**Proudly woven in North America supporting our local communities.**

## Sustainability



## Performance

- Colorfastness to light (AATCC 16.3 Option 3)**  
Grade 4 min. at 40 hours
- Colorfastness to crocking (AATCC 8)**  
Grade 4 min. dry & Grade 3 min. wet
- Breaking Strength (ASTM D5034)**  
270 lbf warp and 150 lbf fill
- Flammability**  
ASTM E84 Class I or A  
CAN/ULC-S102.2

## Acoustical Performance

Our acoustic fabrics are all acoustically transparent. This represents the amount of sound that passes through the fabric.

**Acoustic Transparency:** 95%

For more detailed results, please consult our website.

This pattern is included in the underwriters laboratory panel fabric recognition program. Additional testing of this U.L. recognized fabric is not required on approved panels from participating manufacturers.

\*Certification Marks owned by the Association for Contract Textiles, Inc.

USA & INTERNATIONAL | T 800-544-0200  
CANADA | T 418 227-9897  
For samples, visit [duvaltex.com](https://duvaltex.com)

